

Medical Office Suite for Lease

5960 Getwell Road | Southaven, MS



Conveniently situated on Getwell Road off the heavily-traveled Goodman Road corridor and just 5 miles from Baptist Memorial Hospital South, this well-configured medical space is the ideal central N. Mississippi location for serving clients in Southaven, Olive Branch and expanding neighborhoods to the south. Easy access from light at Getwell and Nail Roads and abundant parking.

- 5,586 SF of usable handicap-accessible and elevator-served space includes:
 - 10 exam rooms
 - 7 private offices
 - Lab and testing areas
 - Waiting and reception areas
 - Break room
 - 3 bathrooms
- Easy access from light at Getwell and Nail Roads
- Abundant parking
- Other tenants in this popular mixed-use center, include Lost Pizza, Mesquite Chop House, Edward Jones Investments, Belle Ross Salon and Spa, Impressions Aesthetics, and Guaranty Bank.

2017 Summary	1 mile	3 miles	5 miles
Population	3,953	29,077	70,034
Households	1,258	10,177	25,286
Average Household Income	\$89,400	\$86,921	\$74,250
Median Household Income	\$80,304	\$78,995	\$62,244

FOR INFORMATION CONTACT:

Roger McLemore

Vice President

901.507.3428

rmclemore@mrgmemphis.com

Jim Brown, CCIM

662.393.2255

jimbrown187@gmail.com

BROWN PROPERTIES

COMMERCIAL & INDUSTRIAL REAL ESTATE
SALES • LEASING • CONSULTING

Makowsky Ringel Greenberg, LLC

1010 June Road, Suite 200

P.O. Box 241990

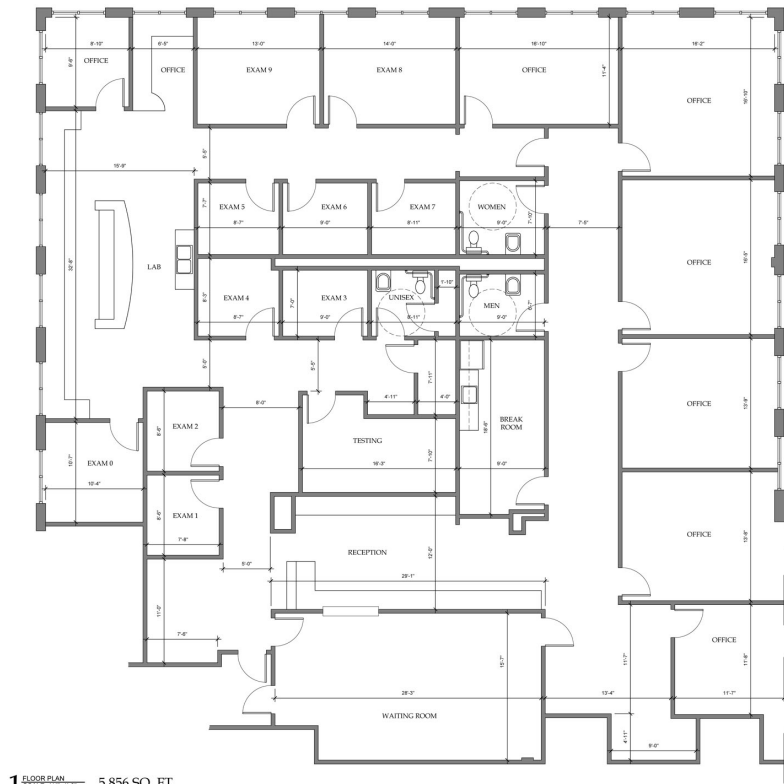
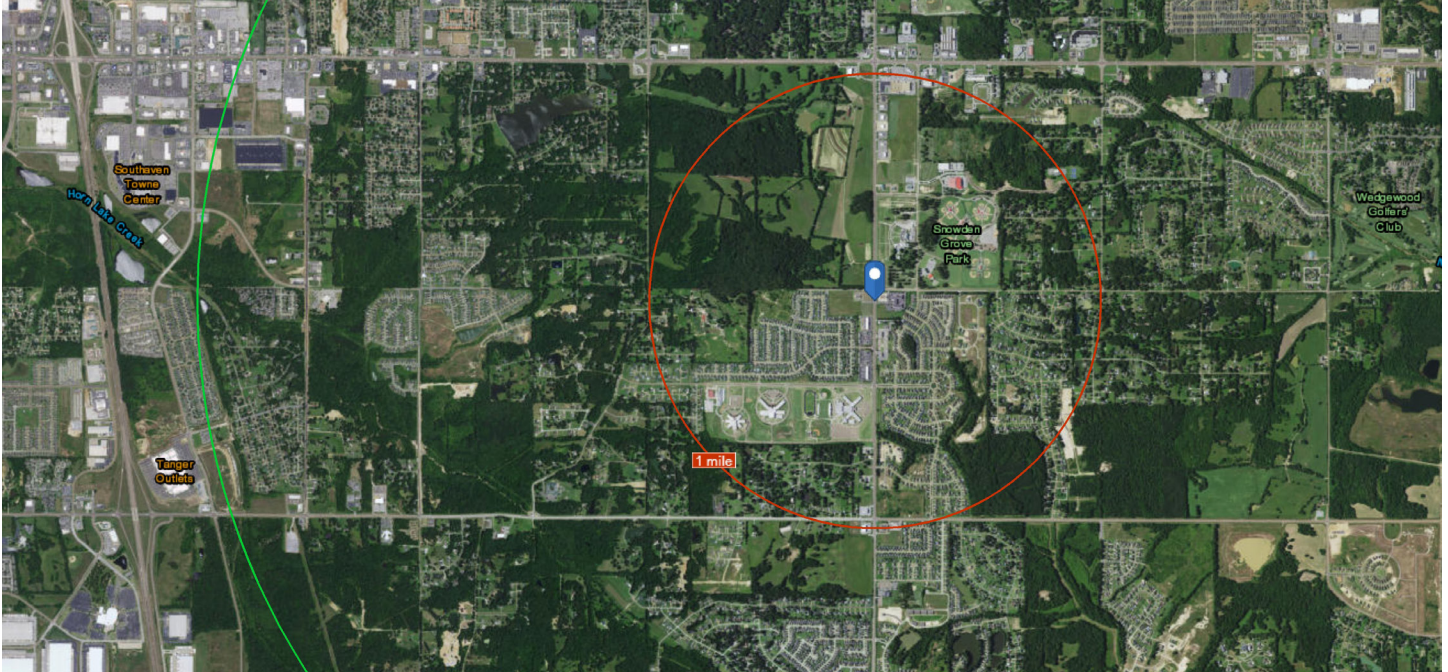
Memphis, TN 38124

Phone: 901.683.2220

Fax: 901.507.3440

www.mrgmemphis.com/commercial

5960 Getwell Road



FOR INFORMATION CONTACT:

Roger McLemore
 Vice President
 901.507.3428
 rmclmore@mrghmemphis.com

Jim Brown, CCIM
 662.393.2255
 jimbrown187@gmail.com



5960 Getwell Road



FOR INFORMATION CONTACT:

Roger McLemore
Vice President
901.507.3428
rmclemore@mrgmemphis.com

Jim Brown, CCIM
662.393.2255
jimbrown187@gmail.com

 **Makowsky
Ringel
Greenberg** LLC
Multi-Family & Commercial Real Estate