

# PACIFIC RIDGE



**CBRE**



West Inn & Suites



PACIFIC RIDGE



- toast
- IN-N-OUT
- McDonald's
- WINDMILL FOOD HALL
- MIGUEL'S
- PF CHANGS
- WINDMILL FOOD HALL
- DRAFT REPUBLIC
- GORDON BAKERY
- RESTAURANT
- CARLSBAD PREMIUM OUTLETS
- PANDA EXPRESS
- NUBY'S
- JERSEY MILK
- RUBIOS COASTAL GRILL

GRAND PACIFIC RESORTS  
Time Away...Time Together...

KARL STRAUSS  
BEERIE CO. COMPANY



PACIFIC RIDGE



- » Pacific Ocean views
- » Located in the premier Carlsbad Ranch Business Park less than one mile to Interstate-5 from Palomar Airport Road or Cannon Road
- » Close proximity to restaurants, services, retail shops & entertainment
- » Fitness facility, showers & lockers
- » Central courtyard with water feature, & Wi-Fi Patio
- » Spacious private view balconies
- » Electric car charging stations



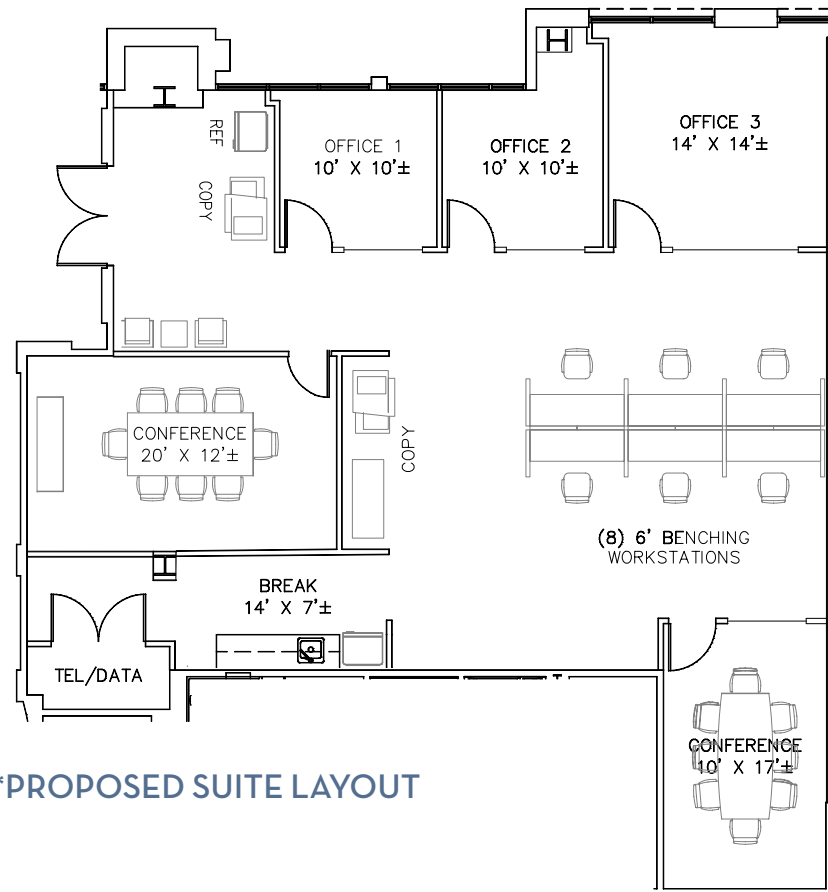
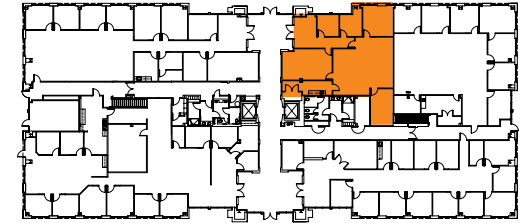
### AVAILABILITY:

ADDRESS	SF	RATE	SUITE FEATURES
5780 Fleet Street <b>Suite 160</b>	2,283	\$3.20	<ul style="list-style-type: none"> <li>• Double door entry off main lobby</li> <li>• 4 offices, conference, reception, kitchen and open bullpen</li> </ul>
5780 Fleet Street <b>Suite 200</b>	2,461-6,874	\$3.20	<ul style="list-style-type: none"> <li>• Double door entry off main lobby</li> <li>• Flexible layout</li> <li>• Divisible</li> </ul>
5790 Fleet Street <b>Suite 100</b>	3,225	\$3.20	<ul style="list-style-type: none"> <li>• Newly renovated spec suite</li> <li>• Double door entry off main lobby</li> <li>• 4-6 offices, conference, reception, kitchen and open bullpen</li> </ul>

### MAJOR TENANTS:

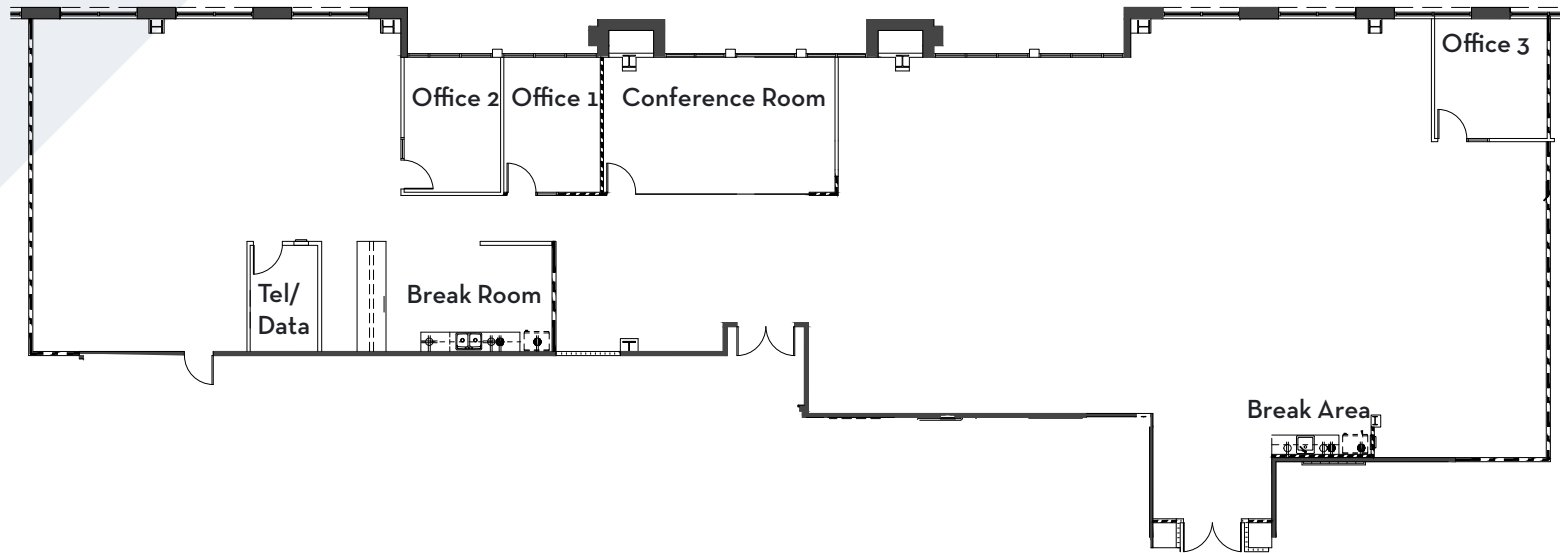
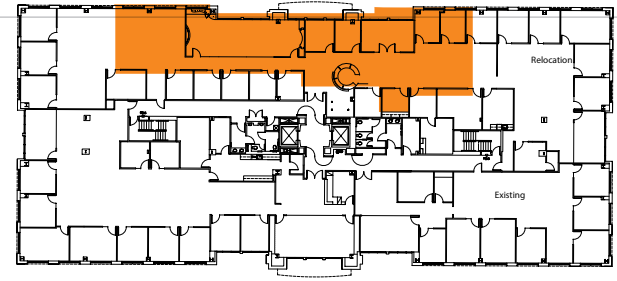


5780 Fleet Street, Suite 160  
2,283 SF

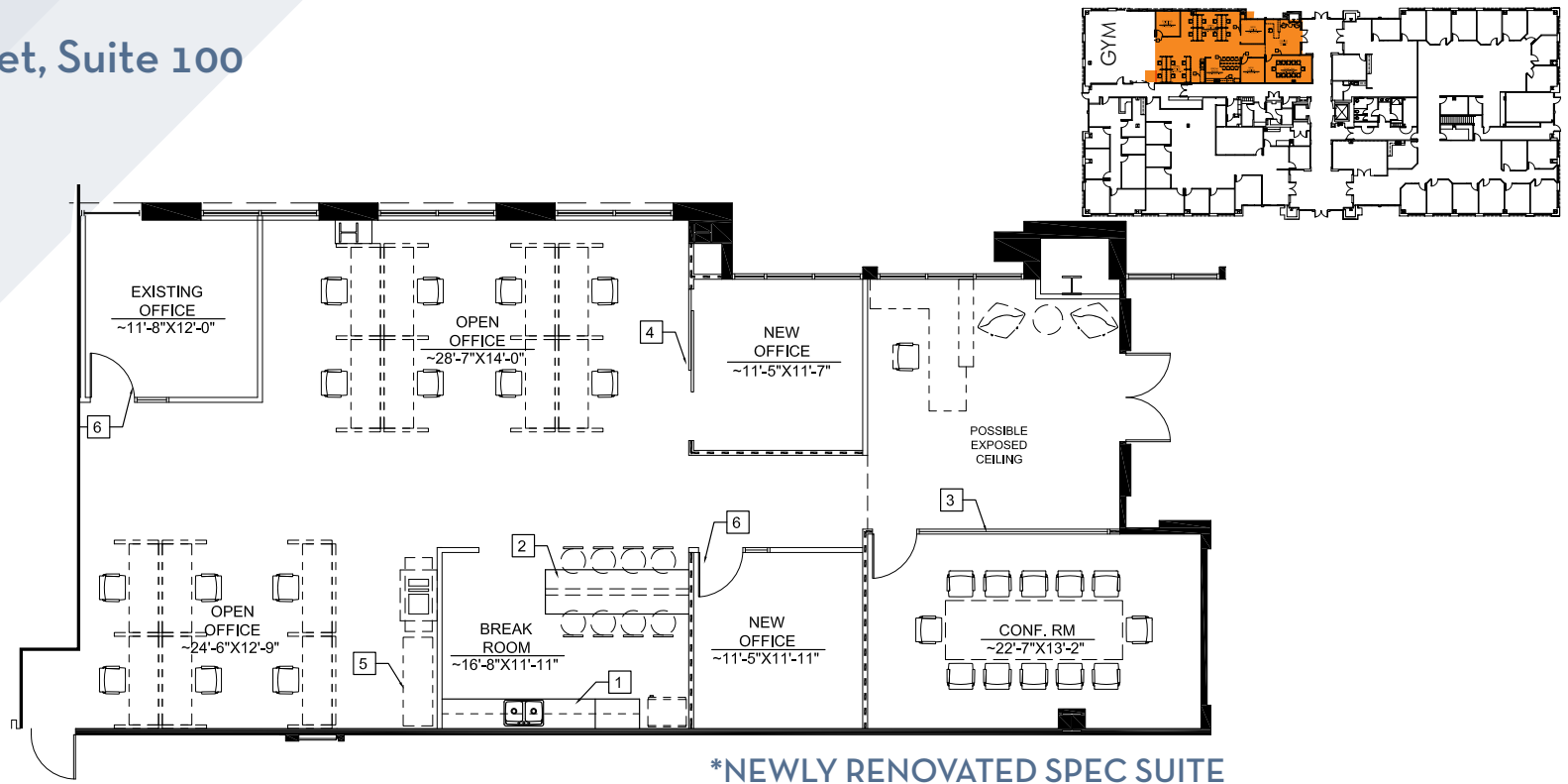


\*PROPOSED SUITE LAYOUT

5780 Fleet Street, Suite 200  
6,874 SF



5790 Fleet Street, Suite 100  
3,225 SF



\*NEWLY RENOVATED SPEC SUITE



# PACIFIC RIDGE

FOR MORE INFORMATION, PLEASE CONTACT:

**ROGER CARLSON**  
Lic. 01236185  
+1 760 438 8533  
[roger.carlson@cbre.com](mailto:roger.carlson@cbre.com)

**BLAKE WILSON**  
Lic. 02001878  
+1 760 438 8587  
[blake.wilson@cbre.com](mailto:blake.wilson@cbre.com)

**CBRE, INC.**  
5780 Fleet Street, Suite 100  
Carlsbad, CA 92008  
[www.cbre.com](http://www.cbre.com)