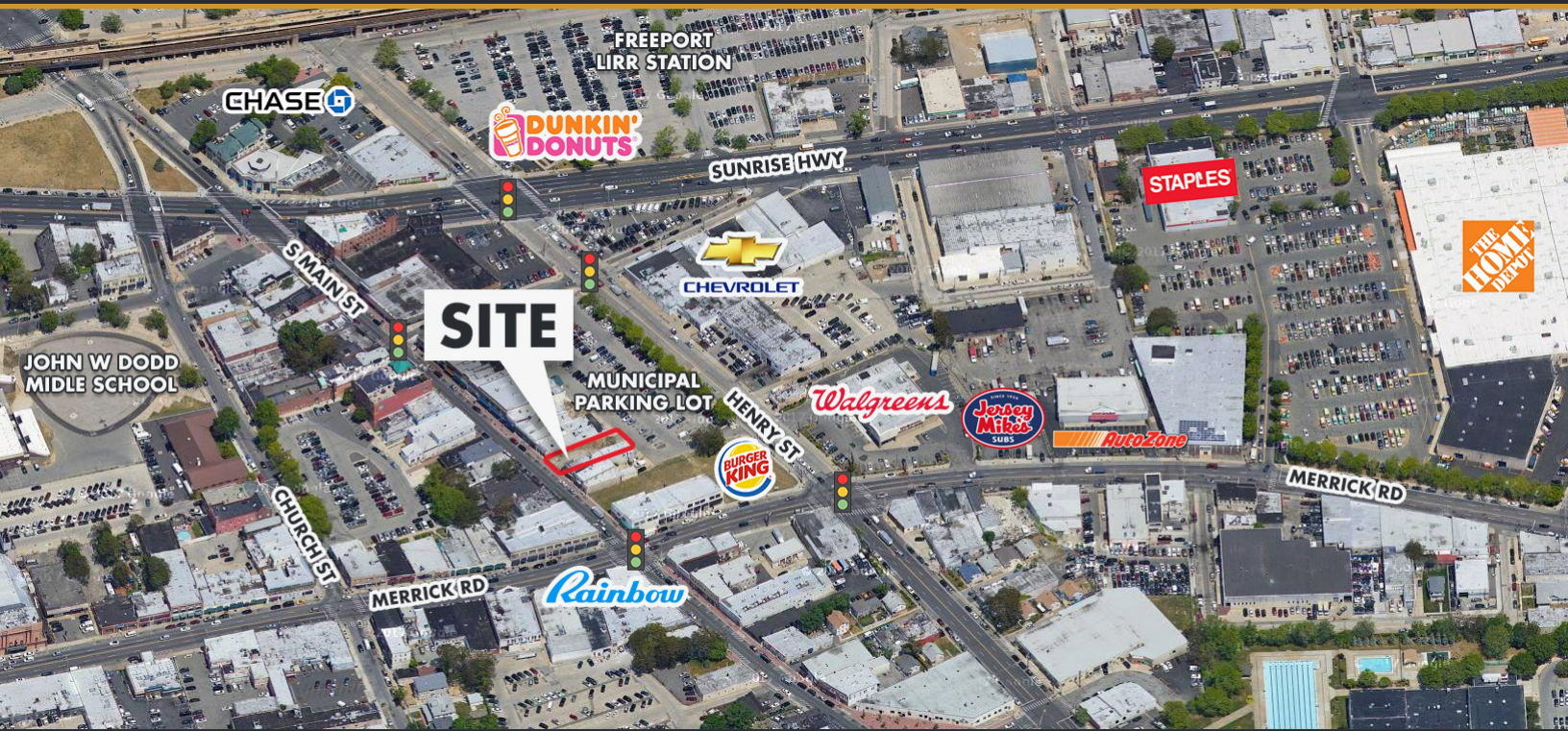


FREEPORT, NEW YORK

New Construction | Retail & Residential Spaces For Lease



LOCATION

87-89 South Main Street
Freeport, NY

RETAIL

Two (+/-) 1,500 Square Foot
Stores that can be combined to
one (+/-) 3,500 Square Foot Store

RESIDENTIAL

Eight (+/-) 1,100 Square Foot
One-Bedroom Apartments

PARKING

Municipal Parking Lot (the build-
ing will have a direct entrance to
the lot)

NEIGHBORING TENANTS

Home Depot, Walgreens, Staples,
Rainbow Shoppes

RENTAL RATES

Call For Details

COMMENTS

The property is located in the central downtown commercial area of Freeport, two blocks from the Freeport LIRR Station. All the residential units will have an elevator and full windows in the front and back, the upper level units will have windows with an open view on the left and right side. This is new construction with occupancy expected in late 2019. The main level retail space can be constructed to a qualified tenant's specifications. This is an unusual opportunity in a densely populated area with high foot traffic, excellent parking and excellent neighboring retail.



DEMOS	1 MILE	3 MILE	5 MILE
POP	29,721	175,841	429,023
A.H.H.I	\$90,293	\$135,870	\$132,273

Breslin Realty
DEVELOPMENT CORP.

FOR MORE INFORMATION

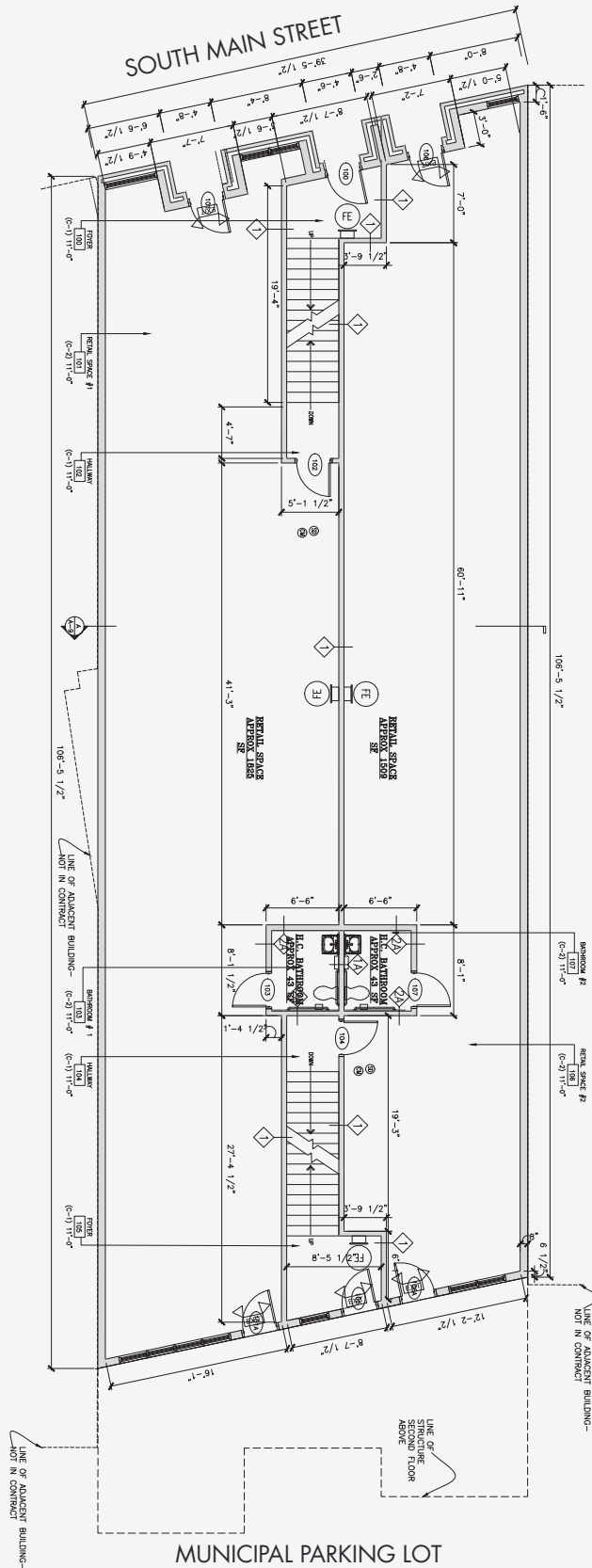
Richard MacDougall | 516.741.7400 x263 | rmacdougall@breslinrealty.com

500 Old Country Rd, Garden City, NY :: www.breslinrealty.com

FREEPORT, NEW YORK

New Construction | Retail & Residential Spaces For Lease

Street Level Retail Concept Plan (Spaces Can Be Combined)



Breslin Realty
DEVELOPMENT CORP.

FOR MORE INFORMATION

Richard MacDougall | 516.741.7400 x263 | rmacdougall@breslinrealty.com

500 Old Country Rd, Garden City, NY :: www.breslinrealty.com