

FOR LEASE

3,450 SQUARE FEET

7956 S Madison Street, BURR RIDGE IL 60527



**BUILDING SPECIFICATIONS:**

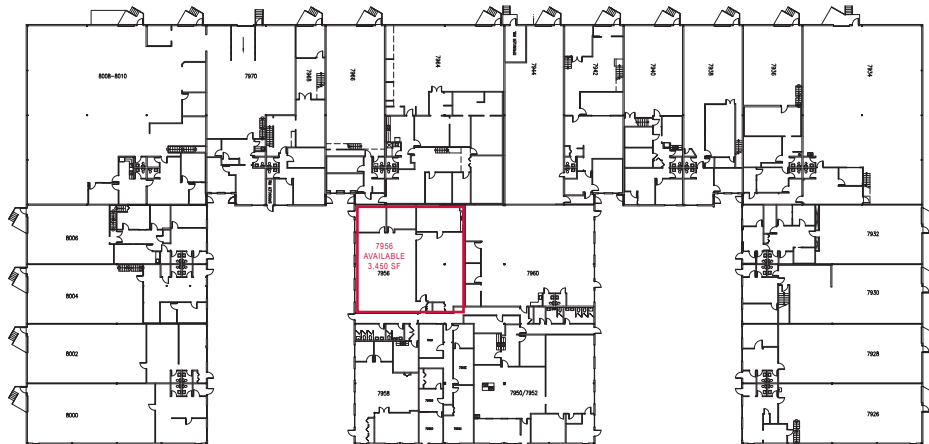
**BUILDING SIZE:** 80,386 SF

**AVAILABLE:** 3,450 SF

**LEASE RATE:** \$12 Gross PSF

**HIGHLIGHTS:**

- › Separately metered
- › Individual entrance
- › Just half a mile to full 4-way interchange and I-55 and Route 83



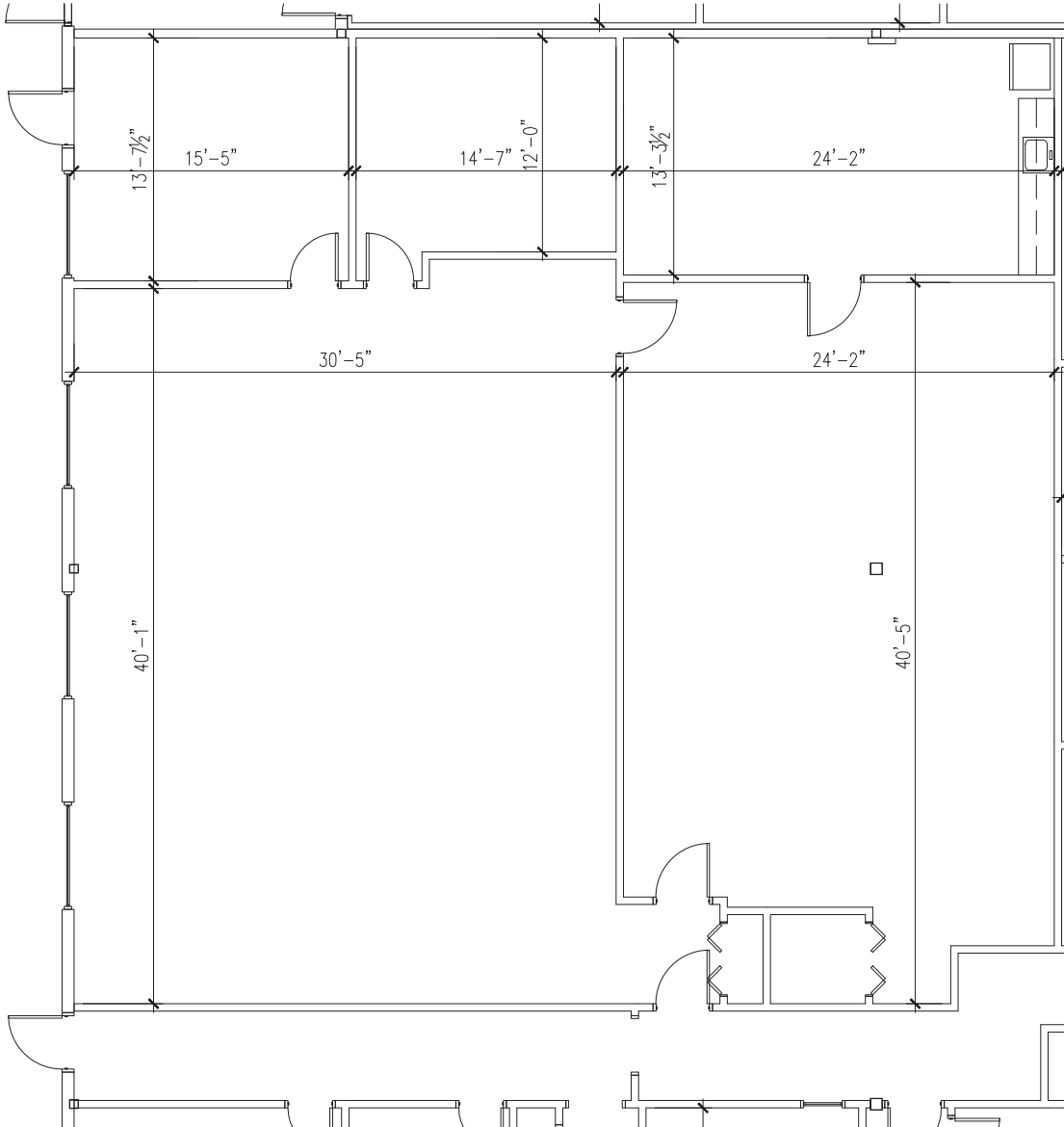
**Caroline A. Dell**  
Associate  
cdell@lee-associates.com  
D 773.355.3035

All information furnished regarding property for sale, rental or financing is from sources deemed reliable, but no warranty or representation is made to the accuracy thereof and same is submitted to errors, omissions, change of price, rental or other conditions prior to sale, lease or financing or withdrawal without notice. No liability of any kind is to be imposed on the broker herein.

FOR LEASE

3,450 SQUARE FEET

7956 S Madison Street, BURR RIDGE IL 60527



**Caroline A. Dell**  
Associate  
cdell@lee-associates.com  
D 773.355.3035

All information furnished regarding property for sale, rental or financing is from sources deemed reliable, but no warranty or representation is made to the accuracy thereof and same is submitted to errors, omissions, change of price, rental or other conditions prior to sale, lease or financing or withdrawal without notice. No liability of any kind is to be imposed on the broker herein.