

Prologis Park Tukwila

1133 | Andover Park West
Tukwila, WA

Industrial Space For Sublease

12,000 SF Total
849 SF Office



 THE ANDOVER
COMPANY, INC.
CORFAC INTERNATIONAL

SHANE MAHVI
(206) 336-5338
smahvi@andoverco.com

RICHARD RAIFORD
(206) 357-5486
rraiford@andoverco.com



FOR SUBLEASE



BUILDING HIGHLIGHTS

The information contained herein has been obtained from reliable sources, but is not guaranteed. A prospective buyer/tenant should verify each item relating to this property and all information contained herein.

- 12,000 SF Total
- 849 SF Office
- 4 Dock Doors
- 24' CH
- 48'0" x 24'7" column spacing
- Easy access to I-5, I-405 and SR-167
- Within 5 miles to Sea-Tac Airport
- Available Now
- Sublease through March 31st, 2027
- Please contact brokers for rates

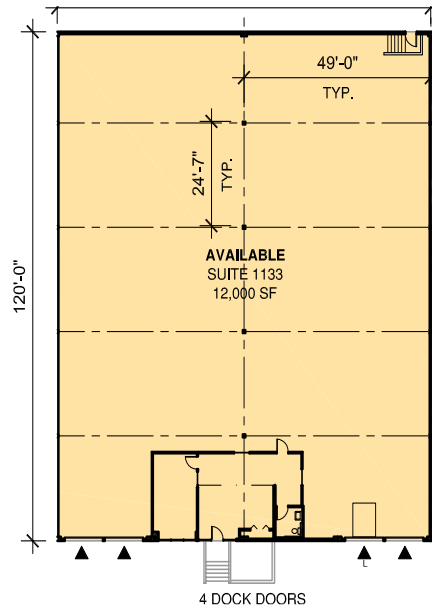
**THE ANDOVER
COMPANY, INC.**
CORFAC INTERNATIONAL

SHANE MAHVI
(206) 336-5338
smahvi@andoverco.com

RICHARD RAIFORD
(206) 357-5486
rraiford@andoverco.com

FLOOR PLANS

Total SF: **12,000 SF**
Office SF: **849 SF**



Legend

▲ Dock-high door

Site Plan

