

AUSTIN PLAZA

517 SW 4TH AVENUE | PORTLAND | OR 97204



CREATIVE OFFICE SPACE

- Great downtown location
- Warm and creative atmosphere
- Mix of private offices and open space
- Exposed brick and beams
- 2nd floor - 4,450 sq. ft.
- 4th floor - 5,560 sq. ft.

- Short walk to Portland's Waterfront Park
- Close to parking and MAX transit
- Bike friendly, bike parking
- Many shops and eateries nearby
- Available now!



BARRINGTON
MANAGEMENT

DAVID EMAMI
503.557.3350
bm@barringtonpdx.com

AUSTIN PLAZA

517 SW 4TH AVENUE | PORTLAND | OR 97204



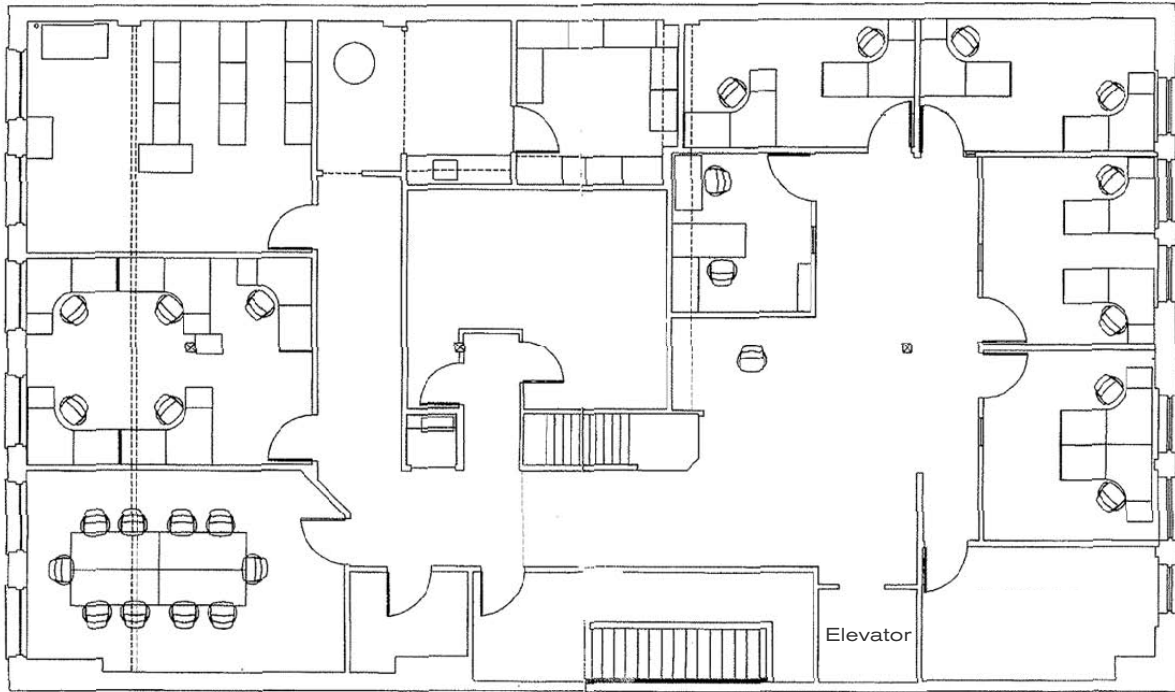
**BARRINGTON
MANAGEMENT**

DAVID EMAMI
503.557.3350
bm@barringtonpdx.com

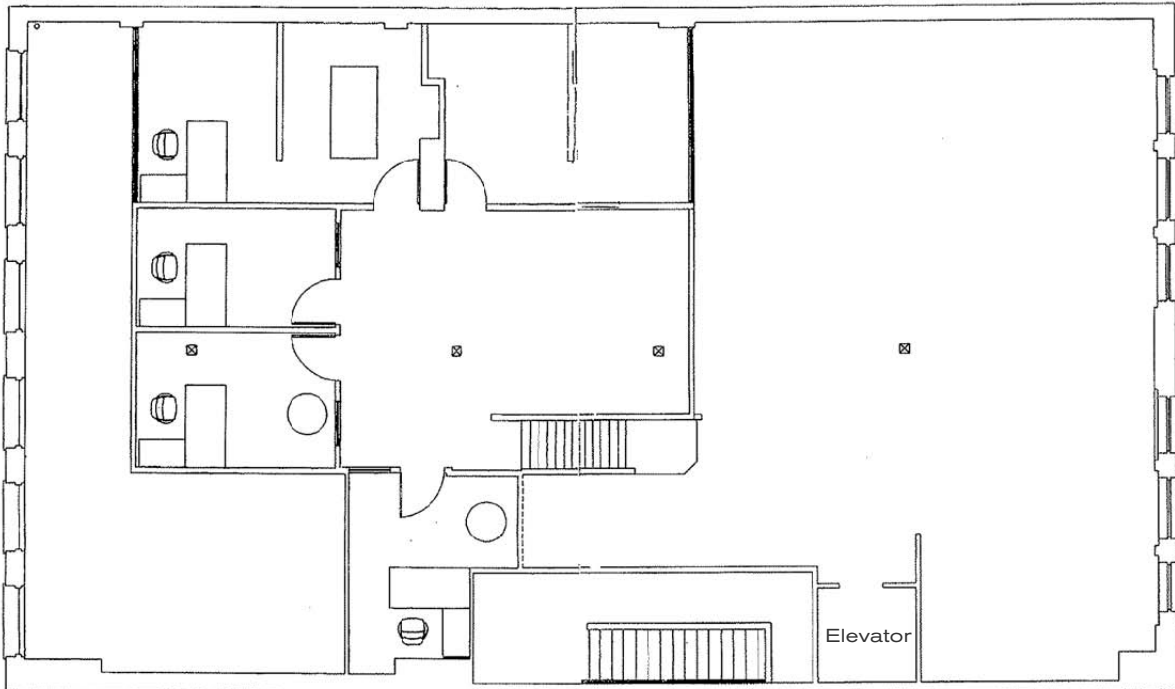
The information contained herein has been obtained from sources deemed reliable, however we do not guarantee its accuracy.

AUSTIN PLAZA

517 SW 4TH AVENUE | PORTLAND | OR 97204



4th Floor



Mezzanine

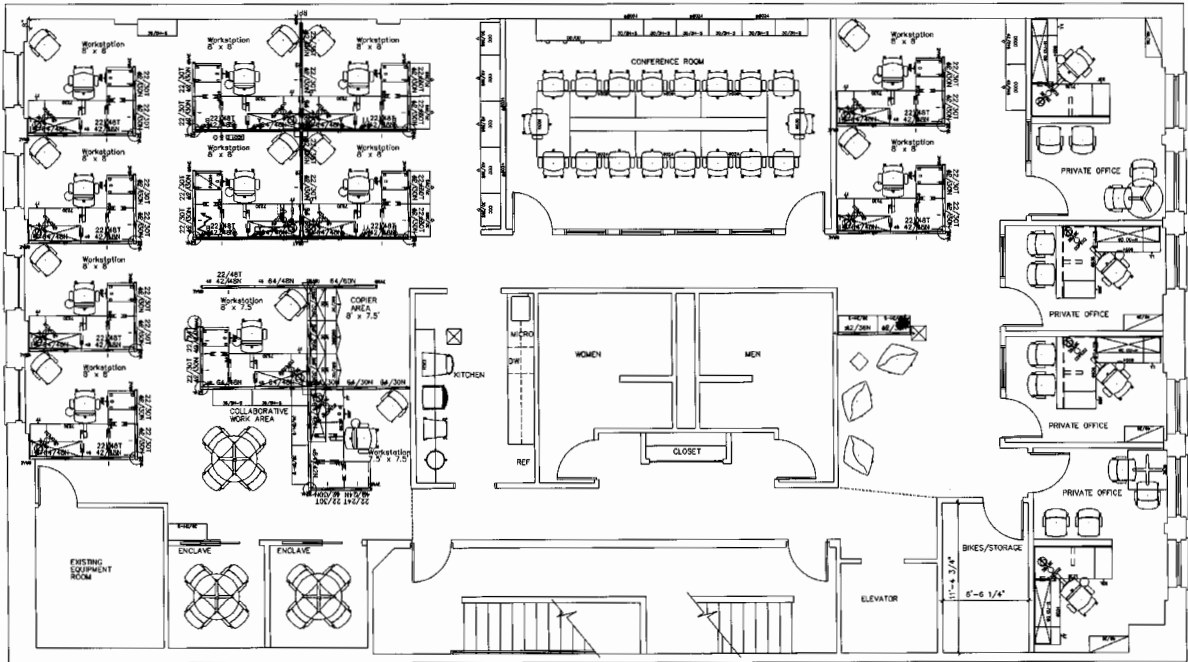


BARRINGTON
MANAGEMENT

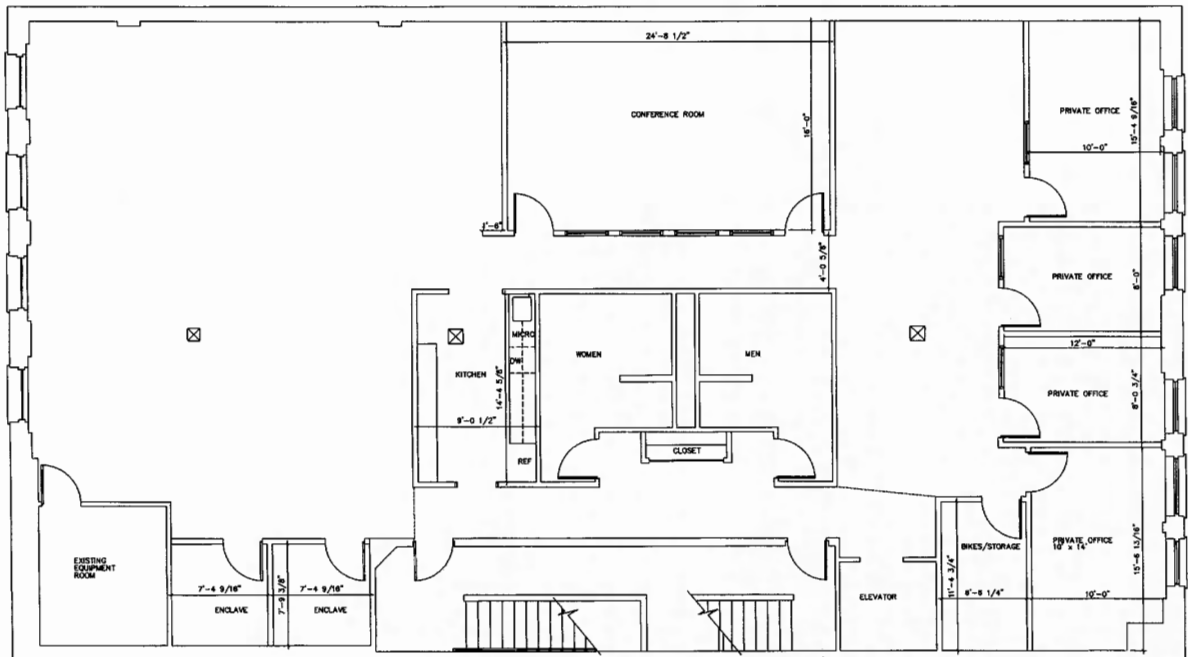
DAVID EMAMI
503.557.3350
bm@barringtonpdx.com

AUSTIN PLAZA

517 SW 4TH AVENUE | PORTLAND | OR 97204



2nd Floor - Furniture Plan



2nd Floor



DAVID EMAMI
503.557.3350
bm@barringtonpdx.com

The information contained herein has been obtained from sources deemed reliable, however we do not guarantee its accuracy.