

Wildwood Plaza East

14748-14796 Clayton Road
Ballwin, MO 63011

705, 1,008 & 1,410 SQUARE FEET RETAIL / OFFICE AVAILABLE FOR LEASE



HUTKIN DEVELOPMENT COMPANY

10829 Olive Boulevard
Suite 200
St. Louis, MO 63141

Telephone 314.872.9140
FAX 314.872.9001

Visit our website:
www.hutkin.com

CONTACT

Tony Giarratano
tony@hutkin.com
Direct 314.708.4922
Cell 314.276.2352

Bo Keefer
bkeefe@hutkin.com
Direct 314.708.1258
Cell 314.973.1242

- 14756 Clayton Road
- 1,410 SF available
- LEASE RATE: \$14.50 PSF NNN

- 14778 Clayton Road
- 705 SF available
- LEASE RATE: \$15.50 PSF NNN

- 14784 Clayton Road
- 1,008 SF available
- LEASE RATE: \$9.75 PSF NNN

- Retail center anchored by The Shack, Swim-Bike-Run, Fit-Flavors and The Wine & Cheese Place
- 5.5 per 1,000 parking ratio
- Located at the intersection of Clayton Road and Wildwood Parkway with high visibility from and great access to Clayton Road

DEMOGRAPHICS	(1 MILE)	(3 MILE)	(5 MILE)
Population:	7,448	75,096	161,417
Daytime Employment:	1,882	60,926	109,268
No. of Households:	2,931	29,261	62,697
Average HH Income:	\$130,964	\$121,163	\$126,742

ANNUAL AVERAGE DAILY TRAFFIC	
Clayton Road:	37,058 vehicles

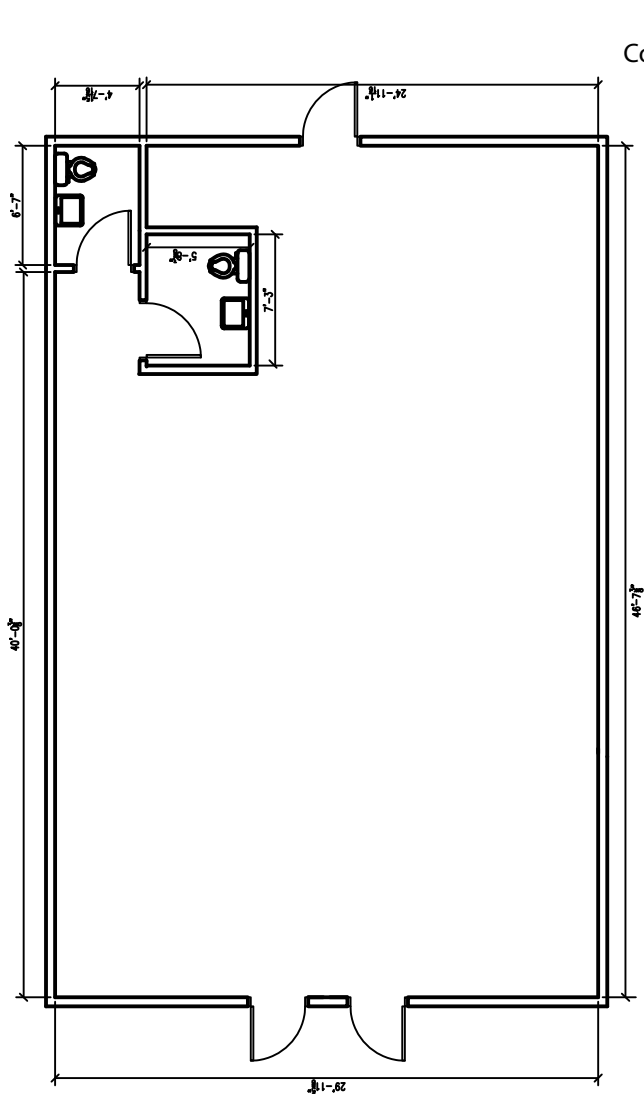
The information contained herein was obtained from a source we consider to be reliable. While we have no reason to doubt its accuracy, we do not guarantee it. All information contained herein is subject to change without notice.

Wildwood Plaza East

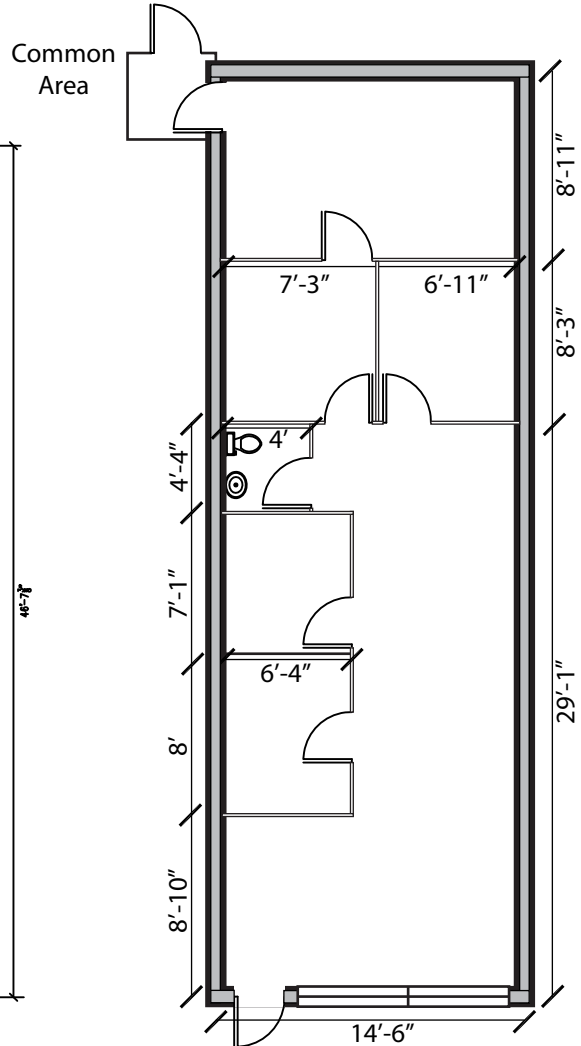
14748-14796 Clayton Road

Ballwin, MO 63011

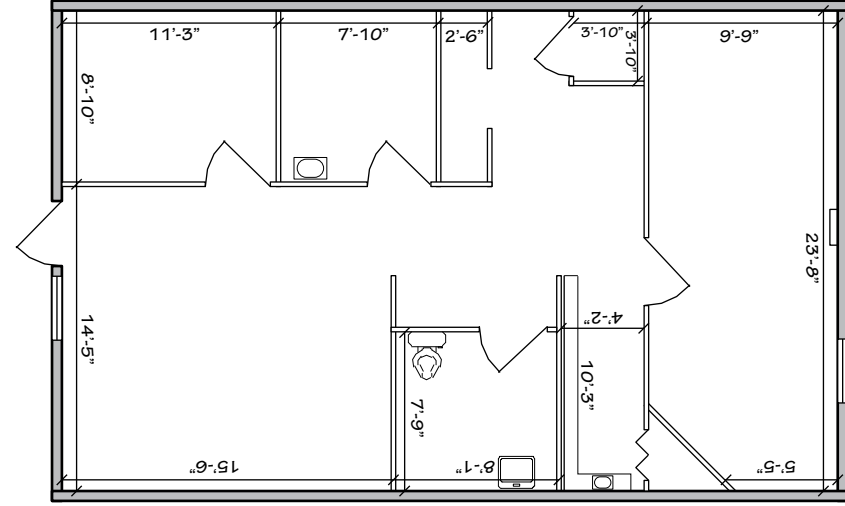
705, 1,008 & 1,410 SQUARE FEET RETAIL / OFFICE AVAILABLE FOR LEASE



14756 CLAYTON ROAD
1,410 SF



14778 CLAYTON ROAD
705 SF



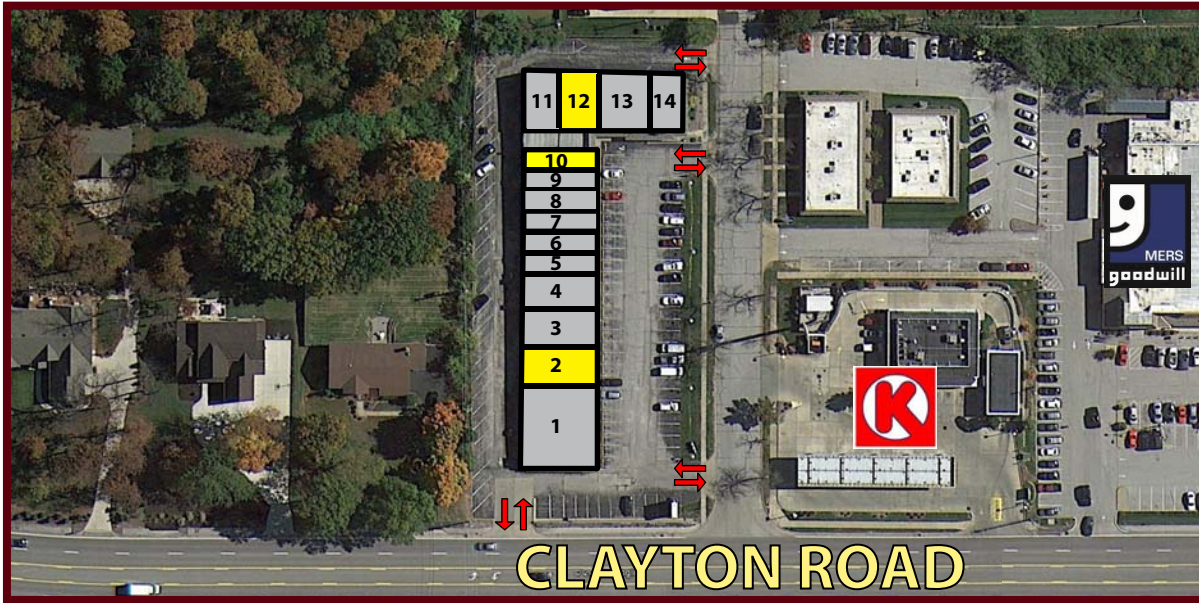
14784 CLAYTON ROAD
1,008 SF

Wildwood Plaza East

14748-14796 Clayton Road

Ballwin, MO 63011

705, 1,008 & 1,410 SQUARE FEET RETAIL / OFFICE AVAILABLE FOR LEASE



NO.	ADDRESS	STATUS	SIZE (SF)
1	14748 Clayton Road	Occupied	2,820
2	14756 Clayton Road	AVAILABLE	1,410
3	14760 Clayton Road	Occupied	1,410
4	14764 Clayton Road	Occupied	1,410
5	14768 Clayton Road	Occupied	705
6	14770 Clayton Road	Occupied	705
7	14772 Clayton Road	Occupied	705
8	14774 Clayton Road	Occupied	705
9	14776 Clayton Road	Occupied	705
10	14778 Clayton Road	AVAILABLE	705
11	14780 Clayton Road	Occupied	960
12	14784 Clayton Road	AVAILABLE	1,008
13	14792 Clayton Road	Occupied	2,016
14	14796 Clayton Road	Occupied	1,008

