

2,915 SF FOR LEASE

11058 Randall Street
Sun Valley, CA 91352



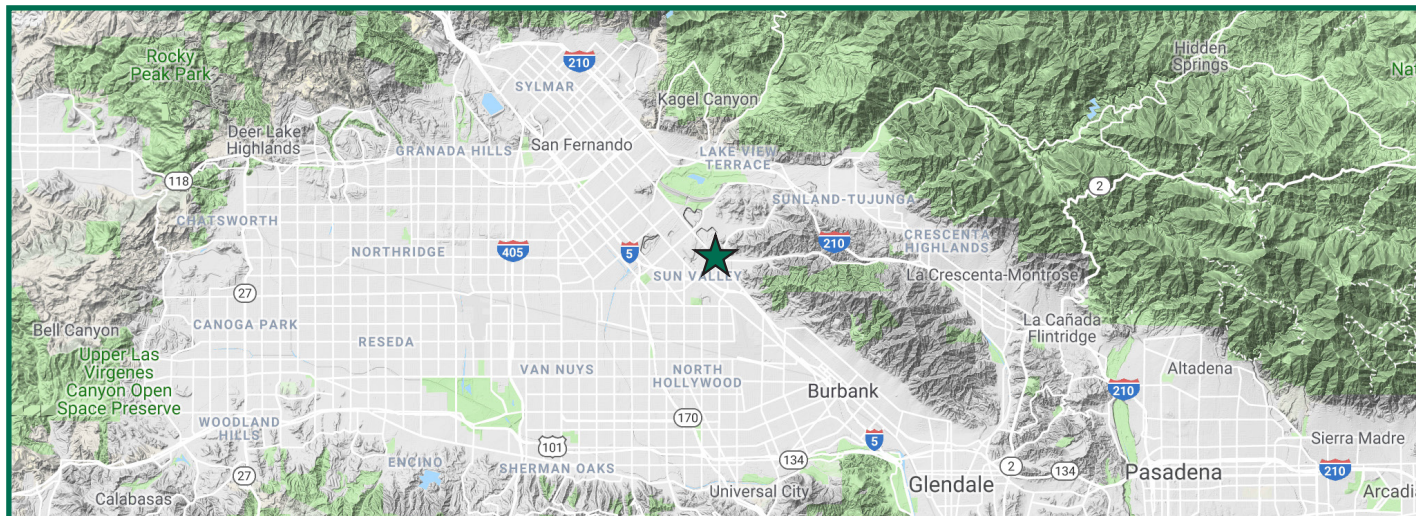
PROPERTY INFO:

LEASE RATE/SF:	\$1.45 G
LEASE RATE/MONTH:	\$4,227
AVAILABLE SF:	2,915
OFFICE SF/#:	923 / 4
OFFICE HVAC:	Yes
GROUND LEVEL DOORS:	1 / 12'w x 14'h
SPRINKLERED:	No
CLEAR HEIGHT:	18'

POWER:	A:200, V:480, P:3, W:4
PARKING SPACES/RATIO:	6 / 2:1
RESTROOMS:	2
PROP LOT SIZE:	POL
ZONING:	M1
APN#:	2408-003-041
POSSESSION:	Immediate
TO SHOW:	Call Agent

PROPERTY HIGHLIGHTS:

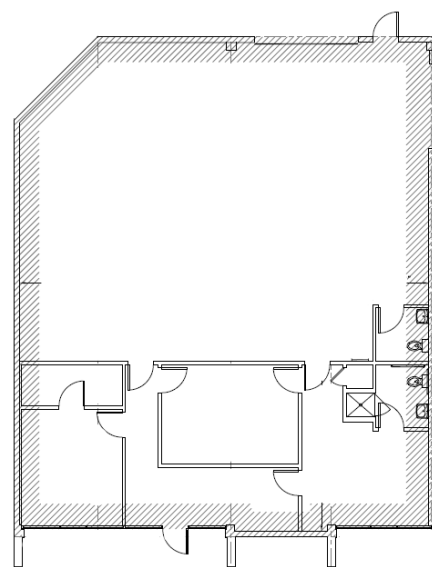
- + GLENOAKS BUSINESS PARK | CLOSE TO BURBANK
- + CORPORATE BUSINESS PARK SETTING
- + SECURED ENVIRONMENT WITH GATED ENTRY
- + STORAGE MEZZANINE ABOVE OFFICES
- + SHOWER IN EXECUTIVE OFFICE | CAT6 CABLING THROUGHOUT



PHOTOS:



LAYOUT:



PLEASE CONTACT:



DAVID HARDING
Senior Vice President
+1 818 502 6731
david.harding@cbre.com
Lic 01049696



GREG GERACI
Senior Vice President
+1 818 502 6741
greg.geraci@cbre.com
Lic 01004871



MATT DIERCKMAN
Senior Vice President
+1 818 502 6752
matt.dierckman@cbre.com
Lic 01301723



BILLY WALK
First Vice President
+1 818 502 6733
william.walk@cbre.com
Lic 01398310

© 2019 CBRE, Inc. All rights reserved. This information has been obtained from sources believed reliable, but has not been verified for accuracy or completeness. You should conduct a careful, independent investigation of the property and verify all information. Any reliance on this information is solely at your own risk. CBRE and the CBRE logo are service marks of CBRE, Inc. All other marks displayed on this document are the property of their respective owners, and the use of such logos does not imply any affiliation with or endorsement of CBRE. Photos herein are the property of their respective owners. Use of these images without the express written consent of the owner is prohibited.