

West Valley at 216 Building F

6421 South 216th Street
Kent, WA

53,599 SF total

4,195 SF office

Divisible to 10,450 SF
with 800 SF office or
combinations thereof

22' clear height

13 dock-high doors
7 grade-level doors

Sprinklered .32 GPM/2,000

Power: 1,000 amps, 277/480 v

High image space in
professionally managed
industrial park

Compatible for manufacturers
and distributors



Location



Contact

Matt Wood, SIOR

206.248.7306

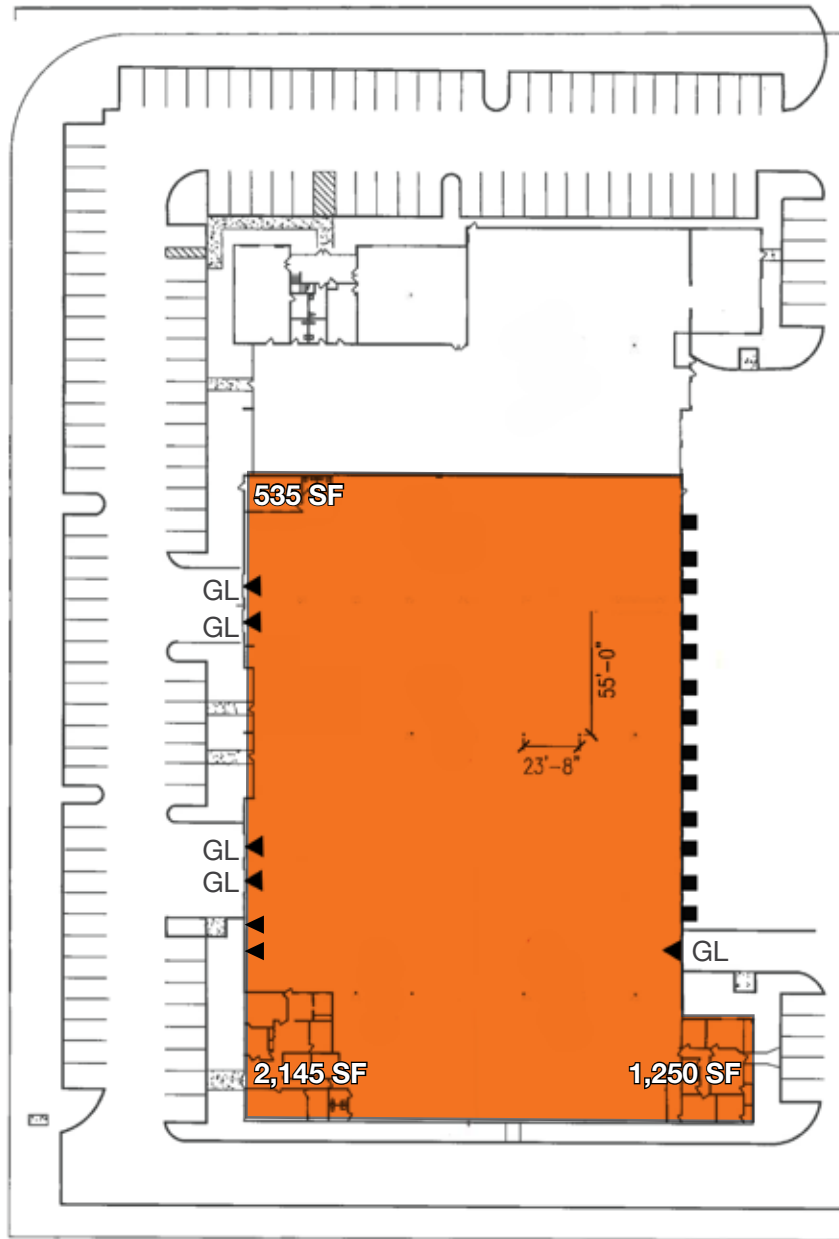
mwood@kiddermathews.com

Mike Newton

206.248.7311

mnewton@kiddermathews.com

West Valley at 216



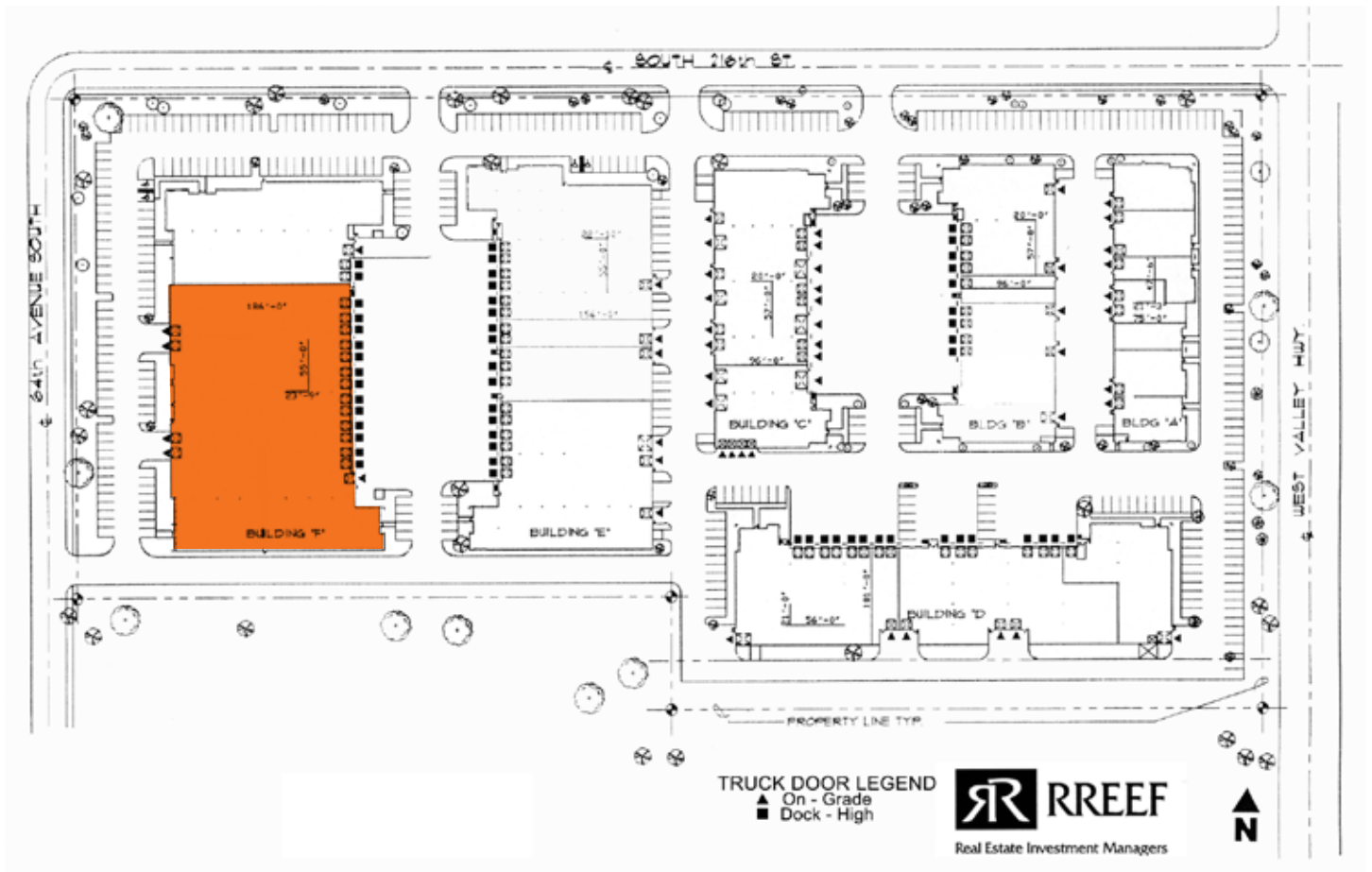
TRUCK DOOR LEGEND
▲ On - Grade
■ Dock - High

Contact

Matt Wood, SIOR
206.248.7306
mwood@kiddermathews.com

Mike Newton
206.248.7311
mnewton@kiddermathews.com

West Valley at 216



Contact

Matt Wood, SIOR

206.248.7306

mwood@kiddermathews.com

Mike Newton

206.248.7311

mnewton@kiddermathews.com