

PRICE REDUCED

FOR SALE



EBERHARDT & BARRY

64± ACRE DEVELOPMENT SITE (DIVISIBLE)

**749 Lamar Road
Macon, Bibb County, Georgia 31210**

Visible from Interstate 475!



- Located conveniently off Zebulon Road and Interstate 475
- Easy access from Zebulon Road
- 64± Acres (Divisible)
- Excellent location for Multi-Family, Residential Subdivision, Hotel, Mini/Self-Storage
- Topo: Sloping
- Zoned PDE
- Property Tax Bill: \$34,474 (2019)

REDUCED SALES PRICE: ~~\$98,000~~ \$90,000/Per Acre (Divisible)

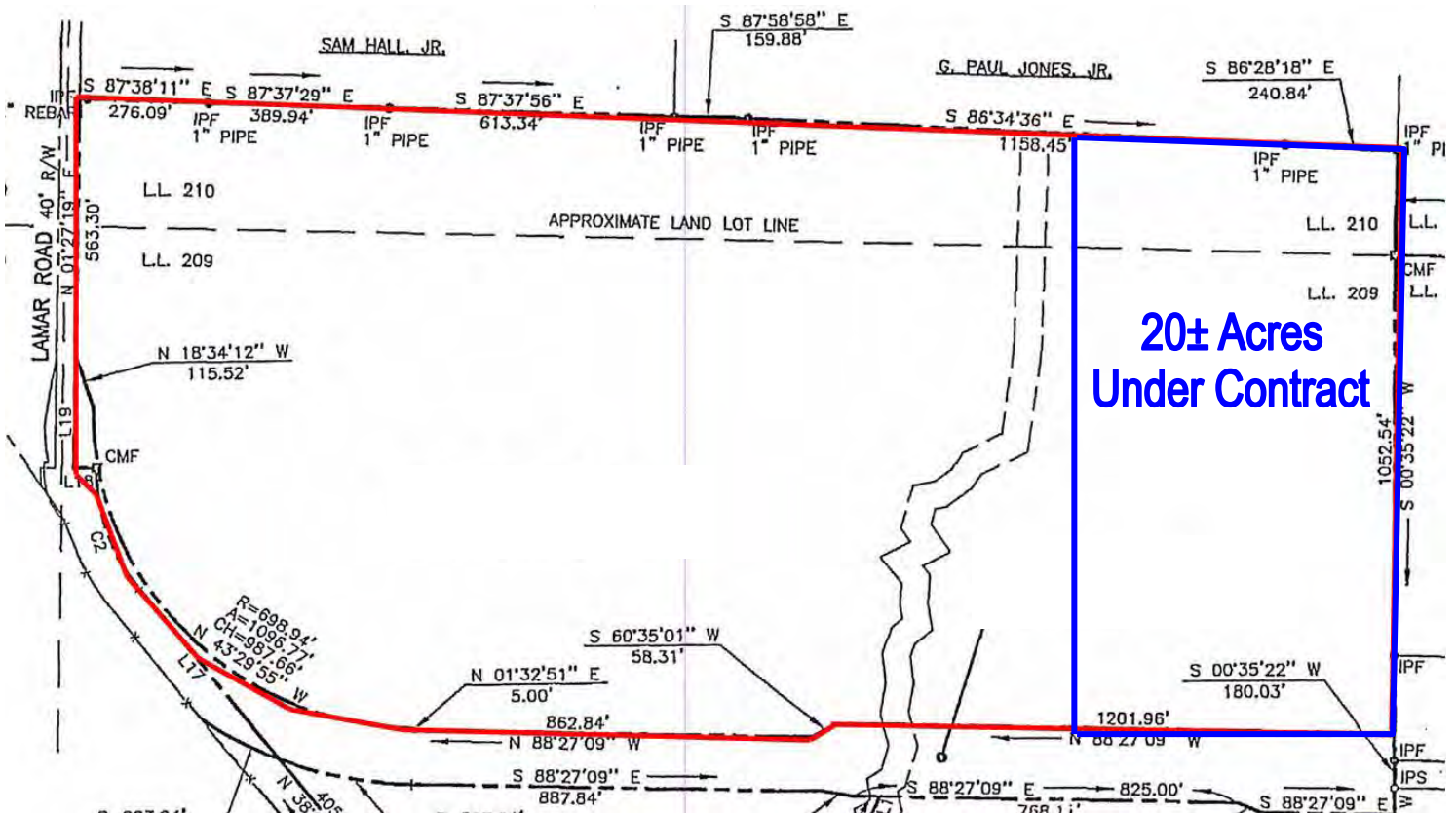
FOR MORE DETAILS CONTACT:

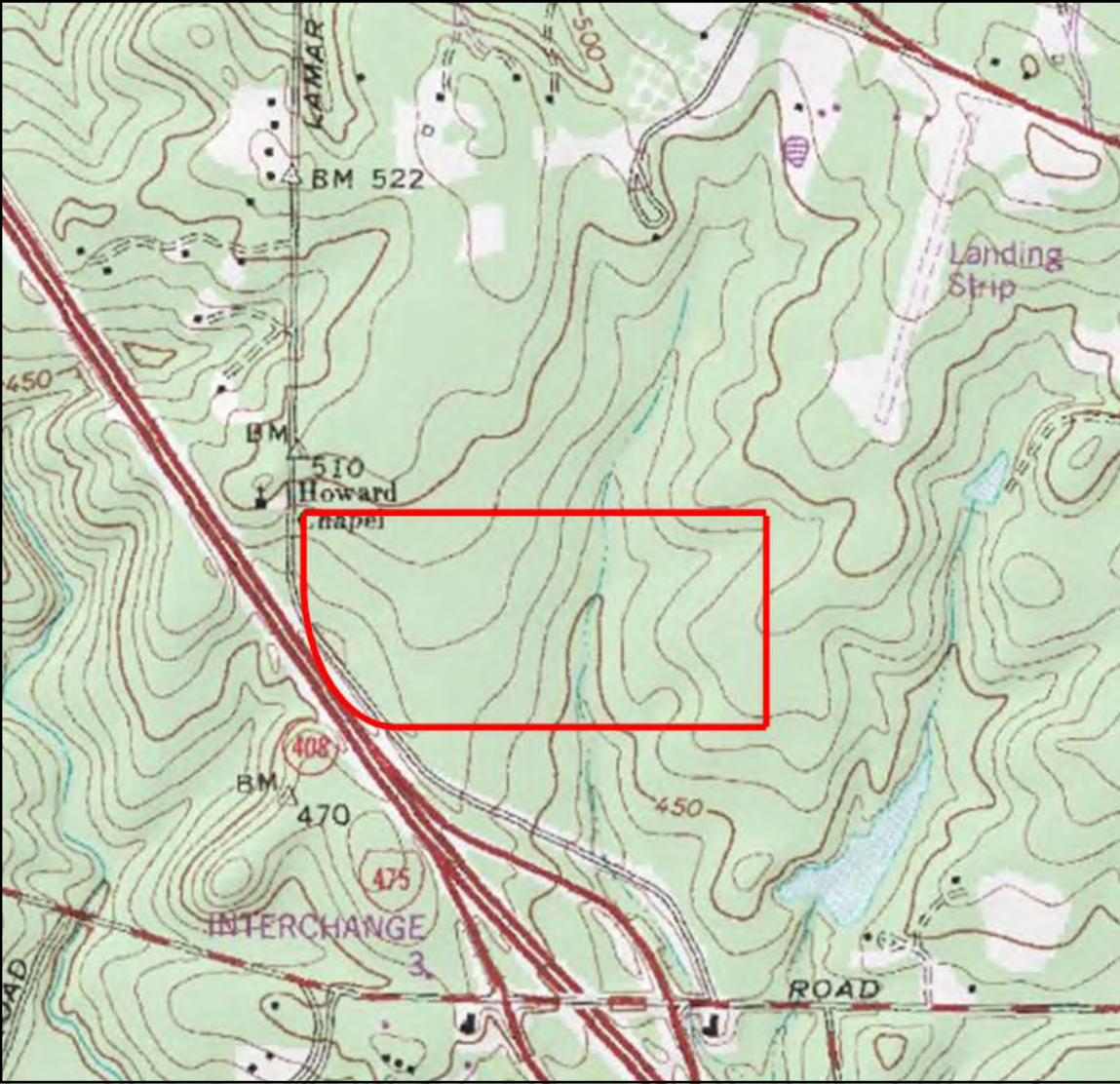
Revised 2/26/20

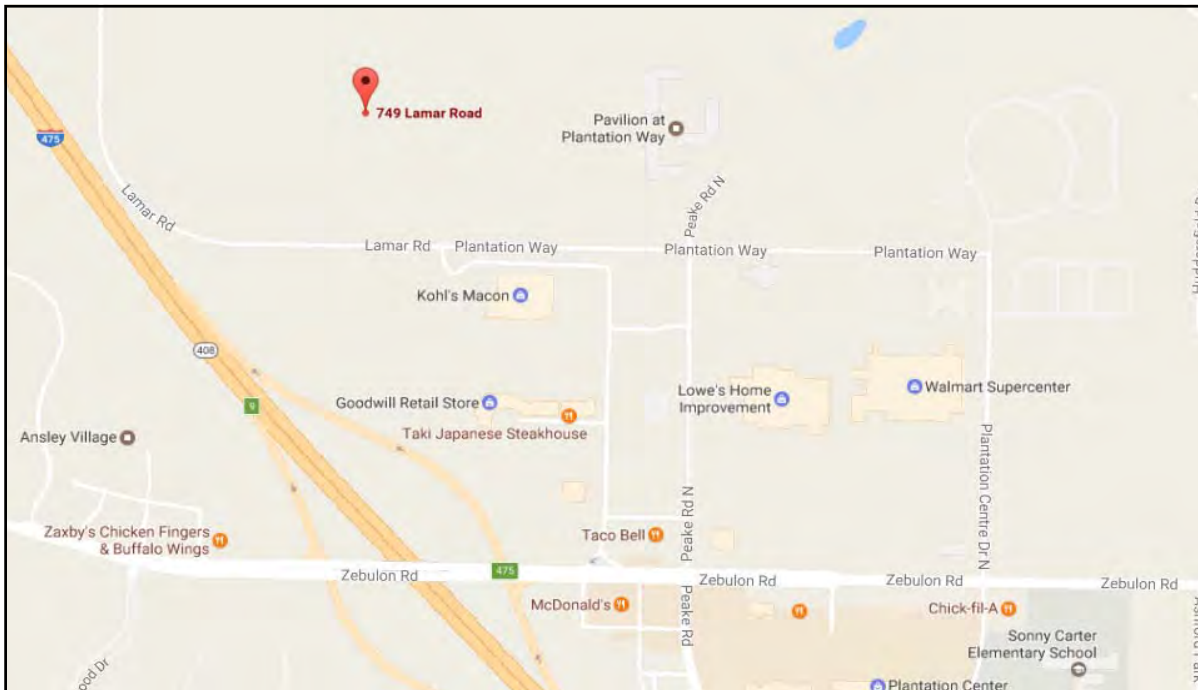
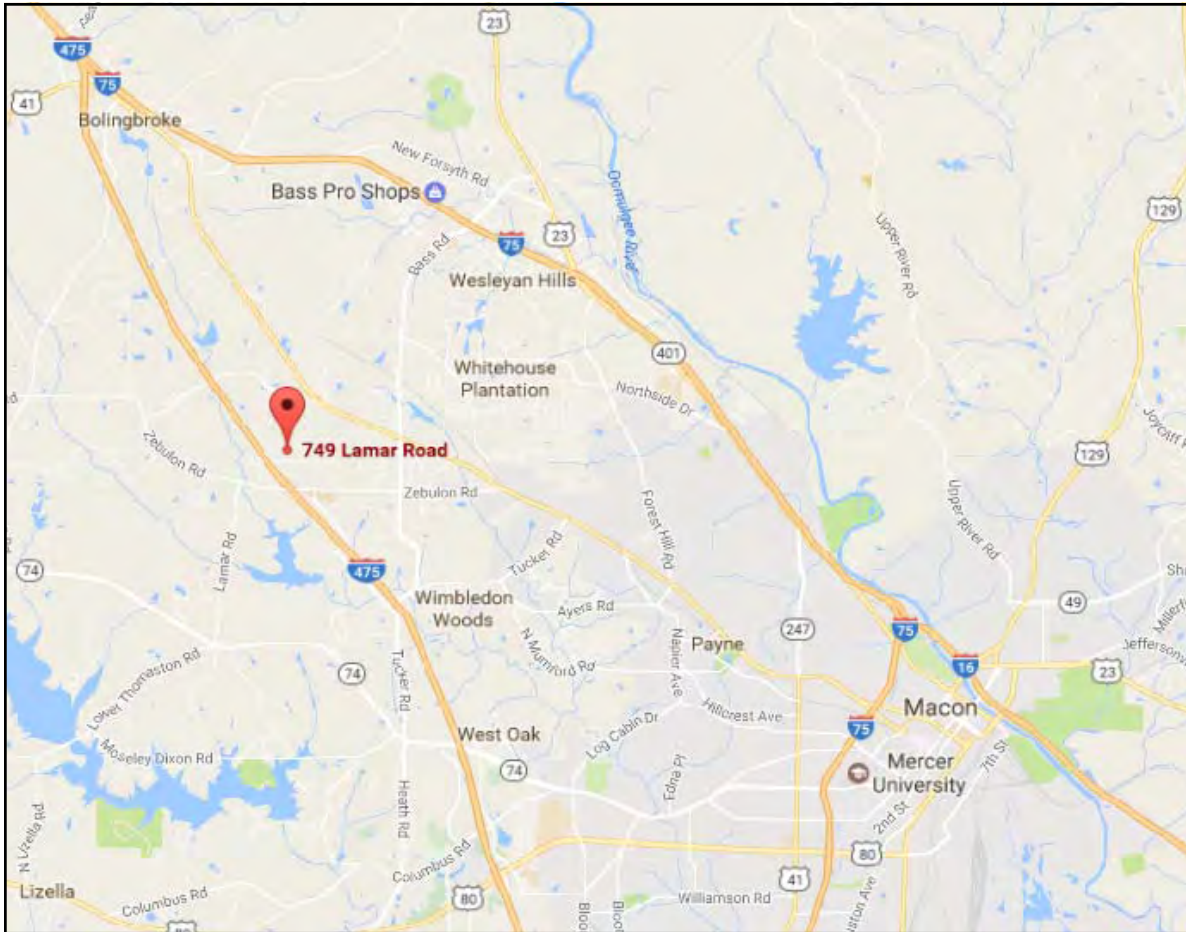
DEIDRA STEWART - Exclusive Agent
deidra@cbcworldwide.com
Coldwell Banker Commercial Eberhardt & Barry Inc.

Main 478-746-8171 **Toll Free** 800-926-0990
Fax 478-746-1362 **Cell** 478-508-2652

990 Riverside Drive
Macon, GA 31201





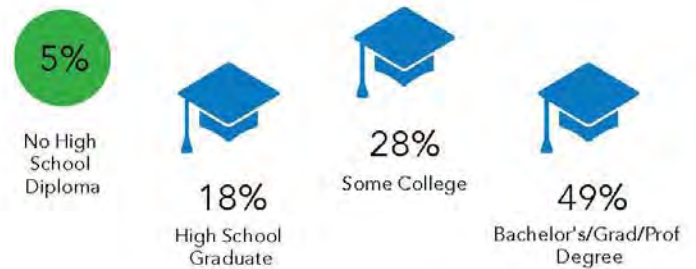




KEY FACTS



EDUCATION



BUSINESS



EMPLOYMENT



INCOME



Households By Income

The largest group: \$100,000 - \$149,999 (21.6%)
The smallest group: <\$15,000 (2.8%)

Indicator	Value	Difference
<\$15,000	2.8%	-14.9%
\$15,000 - \$24,999	5.3%	-8.2%
\$25,000 - \$34,999	6.0%	-5.9%
\$35,000 - \$49,999	13.0%	-2.5%
\$50,000 - \$74,999	18.9%	+4.6%
\$75,000 - \$99,999	14.6%	+5.9%
\$100,000 - \$149,999	21.6%	+10.9%
\$150,000 - \$199,999	9.7%	+6.6%
\$200,000+	8.1%	+3.6%

Bars show deviation from Bibb County



KEY FACTS

17,473

Population



Average Household Size



Median Age

\$75,459

Median Household Income

EDUCATION



No High School Diploma



21%

High School Graduate



26%

Some College



47%

Bachelor's/Grad/Prof Degree

BUSINESS



395

Total Businesses



5,907

Total Employees

EMPLOYMENT



78%

White Collar



9%

Blue Collar



13%

Services



Unemployment Rate

INCOME



\$75,459

Median Household Income



\$40,727

Per Capita Income



\$221,473

Median Net Worth

Households By Income

The largest group: \$100,000 - \$149,999 (19.3%)

The smallest group: <\$15,000 (3.6%)

Indicator	Value	Difference	
<\$15,000	3.6%	-14.1%	
\$15,000 - \$24,999	5.8%	-7.7%	
\$25,000 - \$34,999	7.1%	-4.8%	
\$35,000 - \$49,999	14.3%	-1.2%	
\$50,000 - \$74,999	18.9%	+4.6%	
\$75,000 - \$99,999	14.3%	+5.6%	
\$100,000 - \$149,999	19.3%	+8.6%	
\$150,000 - \$199,999	7.9%	+4.8%	
\$200,000+	8.8%	+4.3%	

Bars show deviation from Bibb County

KEY FACTS

43,820

Population


 Average
Household Size

39.8

Median Age

\$63,951

 Median Household
Income

EDUCATION

6%

 No High
School
Diploma


23%

 High School
Graduate


26%

Some College



45%

 Bachelor's/Grad/Prof
Degree

BUSINESS



1,640

Total Businesses



21,040

Total Employees

EMPLOYMENT



76%

White Collar



11%

Blue Collar



13%

Services

3.6%

 Unemployment
Rate

INCOME



\$63,951

 Median Household
Income


\$39,411

Per Capita Income



\$137,274

Median Net Worth

Households By Income

The largest group: \$50,000 - \$74,999 (16.3%)

The smallest group: <\$15,000 (6.0%)

Indicator	Value	Difference	
<\$15,000	6.0%	-11.7%	
\$15,000 - \$24,999	8.6%	-4.9%	
\$25,000 - \$34,999	9.3%	-2.6%	
\$35,000 - \$49,999	15.6%	+0.1%	
\$50,000 - \$74,999	16.3%	+2.0%	
\$75,000 - \$99,999	11.9%	+3.2%	
\$100,000 - \$149,999	16.2%	+5.5%	
\$150,000 - \$199,999	6.1%	+3.0%	
\$200,000+	10.0%	+5.5%	

 Bars show deviation from
Bibb County