

Executive Tower

11400 W. Olympic Blvd., Suite 200, Los Angeles, CA 90064



PRIVATE OFFICES

Highly professional private offices for individuals and teams that are flexible and scaled for growth.

MEETING ROOMS

Spacious, well-appointed meeting rooms with on-site administrative support. Available for an hour, day or longer.

VIRTUAL OFFICES

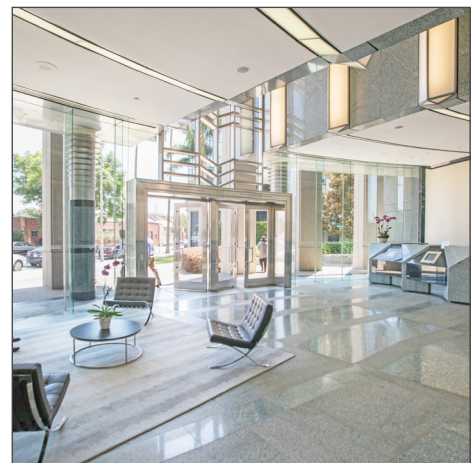
Establish a business presence with mail handling, phone answering or meeting room time.

ABOUT THIS LOCATION

The Executive Tower is a 17-story reflective glass building's exterior is decorated with a beautiful garden and two 25-foot cascading waterfalls as well as an art deco lobby with granite floors and marble accents. Executive Tower is the epitome of a prestigious office building in a prime location. You'll be within walking distance to the historic and trendy neighborhood of Sawtelle Japantown, with an abundance of eateries and shops.

CONTACT US

Let's touch base! Contact the on-site General Manager at 310-910-9181 or ETomanager@premierworkspaces.com to schedule a tour.



Executive Tower

11400 W. Olympic Blvd., Suite 200, Los Angeles, CA 90064



PREMIER AMENITIES

Our private suites can be easily customized to fit your desired aesthetic and brand.

- Private Offices
- Team Rooms
- High Speed Internet
- Telephone Answering
- Mail Collection
- Equipped Kitchen
- Day Offices
- Meeting Rooms
- Daily Janitorial
- Furnished or Unfurnished

PREMIER DIFFERENCE

We've been perfecting the professional workspace for over 17 years.

- Highly-Professional Atmosphere
- On-Site Manager & Support Staff
- Scalable Solutions for Individuals and Teams
- On-Site Billing
- 90+ Locations Nationwide



NEARBY AMENITIES

The Executive Tower is located in affluent West Los Angeles on Olympic Boulevard, the commercial heart of this district. This location is only minutes away from the 10 and 405 freeways.

Nearby Amenities:

- Sawtelle Japantown
- One Westside Shopping Center
- University of California, Los Angeles (UCLA)
- West LA USPS Office
- Il Moro Restaurant

Nearby Transit:

- Freeways – 405, 10
- Rail – Metrolink
- Bus – LA Metro
- Air – Los Angeles International Airport (LAX)

CONTACT US

Let's touch base! Contact the on-site General Manager at 310-910-9181 or ETOManager@premierworkspaces.com to schedule a tour.