

FOR LEASE

# 730 MOOWAA ST

BAY F - SMALL WAREHOUSE WITH 6 PARKING  
HONOLULU, HI 96817



## PROPERTY HIGHLIGHTS

- + Ground floor space
- + Mezzanine office - No charge
- + Kalihi - close to town
- + Roll-up door + man door
- + Access & parking on both sides
- + Private restroom
- + Visitor parking available



SIZE (approx)	1,440 SF
ZONING	IMX-1
TERM	3-5 Years
BASE RENT	\$1.70 SF/MO
CAM/RPT	\$0.42 SF/MO
PARKING	Fronting space on both sides
AVAILABILITY	Now



## CONTACT US

### GEORGE T. LACEY (B)

First Vice President  
+1 808 541 5108  
george.lacey@cbre.com

[www.cbre.us/hawaii](http://www.cbre.us/hawaii)

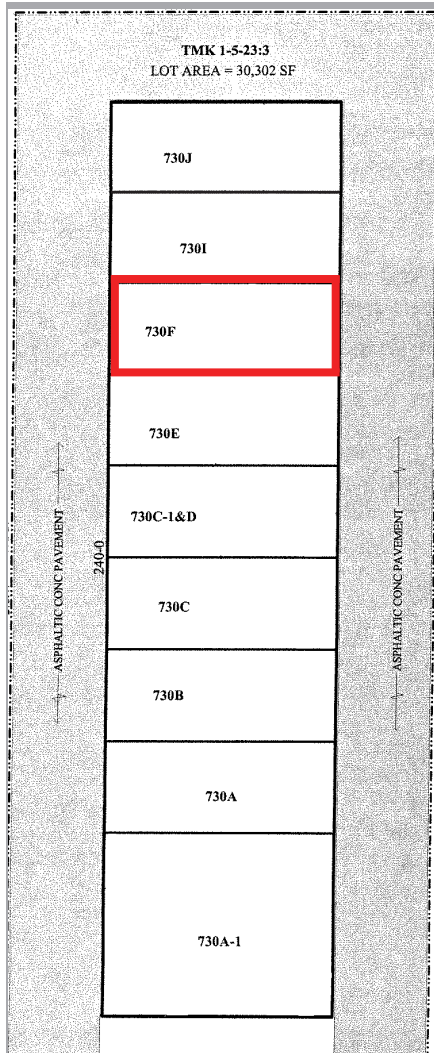
**CBRE**

# FOR LEASE 730 MOOWAA ST

BAY F  
HONOLULU, HI 96817



## SITE MAP



© 2018 CBRE, Inc. All rights reserved. This information has been obtained from sources believed reliable, but has not been verified for accuracy or completeness. You should conduct a careful, independent investigation of the property and verify all information. Any reliance on this information is solely at your own risk. CBRE and the CBRE logo are service marks of CBRE, Inc. All other marks displayed on this document are the property of their respective owners. Photos herein are the property of their respective owners. Use of these images without the express written consent of the owner is prohibited.

GL:BS\_ID08\_MoowaaSt730BayF\_08.14.19