



**SPENCER/HINES**

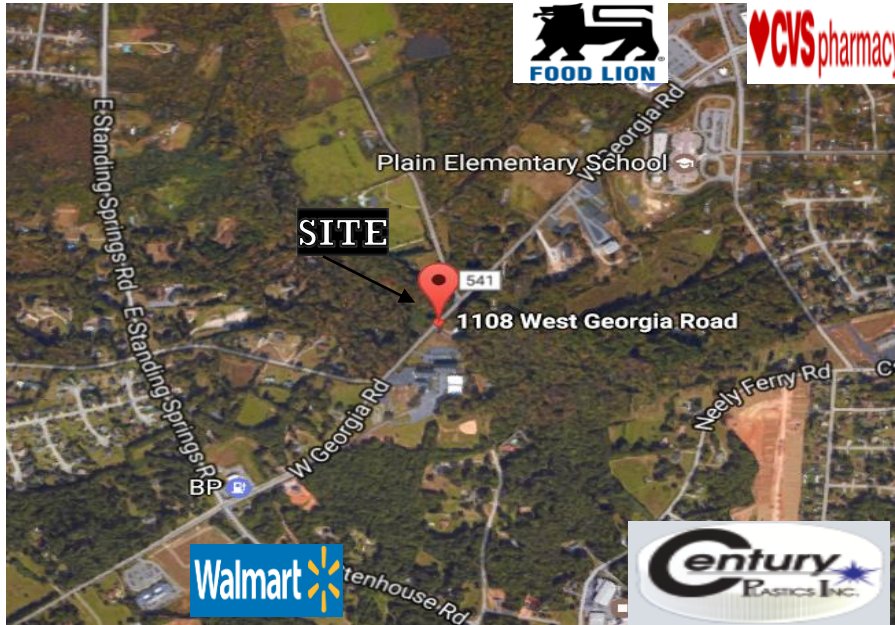
*Properties*

Commercial Real Estate  
Sales, Leasing & Investments

# COMMERCIAL LAND FOR SALE

**+/-4.10 ACRES AVAILABLE**

**1108 W. GEORGIA RD, SIMPSONVILLE SC 29680**



GREENVILLE COUNTY  
TAX MAP :  
0574020103401

4.10 ACRES LOCATED  
ON W. GEORGIA RD.

+/-275' OF ROAD  
FRONTAGE

POWER AND WATER  
AVAILABLE TO THE  
SITE

GREAT LOCATION

ZONED:  
BUSINESS GENERAL,  
CITY OF  
SIMPSONVILLE

**SALE PRICE:**  
**\$400,000**

Population	1 Mile	3 Mile	5 Mile
2017 Total Population:	4,869	44,609	87,379
2022 Population:	5,293	48,622	94,910
Pop Growth 2017-2022:	8.71%	9.00%	8.62%
Average Age:	36.70	37.10	37.70
Households			
2017 Total Households:	1,799	16,668	33,297
HH Growth 2017-2022:	8.67%	9.03%	8.63%
Median Household Inc:	\$63,343	\$68,250	\$66,207
Avg Household Size:	2.70	2.70	2.60
2017 Avg HH Vehicles:	2.00	2.00	2.00



No warranty or representation, expressed or implied,  
is made to the accuracy of the information contained  
herein, and the same is submitted subject to errors,  
omissions, change of price, rental or other conditions,  
imposed by the principles.

Contact Information

**Jason P. Klue**

245 N. Main St, Suite 201

Greenville, SC 29601

Office 864.991.8077

Cell 864.905.8401

jasonklue@spencerhines.com

www.spencerhines.com





**SPENCER/HINES**

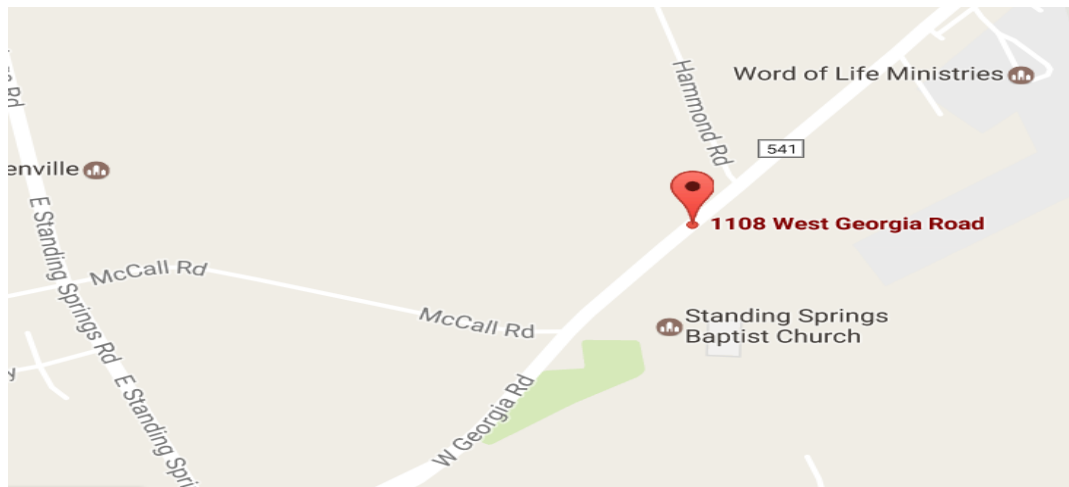
*Properties*

Commercial Real Estate  
Sales, Leasing & Investments

# COMMERCIAL LAND FOR SALE

**+4.10 ACRES AVAILABLE**

**1108 W. GEORGIA RD, SIMPSONVILLE SC 29680**



No warranty or representation, expressed or implied, is made to the accuracy of the information contained herein, and the same is submitted subject to errors, omissions, change of price, rental or other conditions, imposed by the principles.

Contact Information

**Jason P. Klue**

245 N. Main St, Suite 201

Greenville, SC 29601

Office 864.991.8077

Cell 864.905.8401

[jasonklue@spencerhines.com](mailto:jasonklue@spencerhines.com)

[www.spencerhines.com](http://www.spencerhines.com)

