

UPPER EAST  
SIDE

NEW YORK  
NY

# 1380 MADISON AVENUE



# SPACE DETAILS

## LOCATION

Northwest corner of East 96th Street

## APPROXIMATE SIZE

Ground Floor 1,300 SF\*

*\*Divisions to be considered*

## CEILING HEIGHT

Ground Floor 14 FT 6 IN

## FRONTAGE

60 FT on Madison Avenue

## TERM

Negotiable

## POSSESSION

Immediate

## SITE STATUS

Currently Papyrus

## NEIGHBORS

Starbucks, Bank of America, Citibank, Sarabeth's, Yura On Madison, Linda Horn, Seraphine, Bonpoint, Gina La Fornarina, Juice Press and Pascalou

## COMMENTS

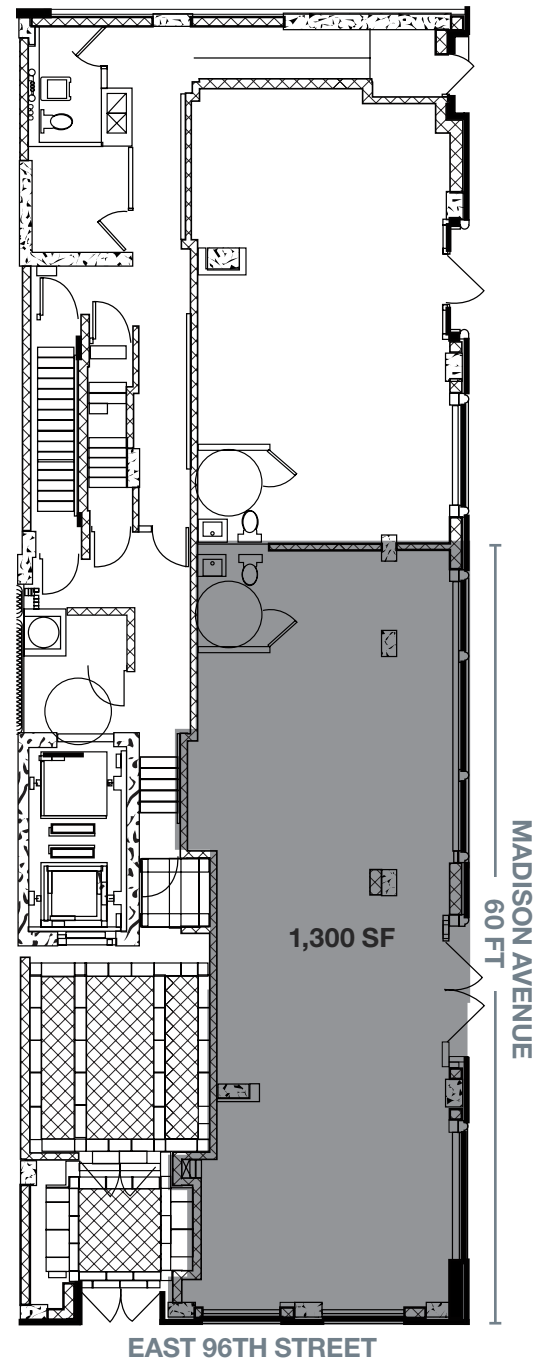
Located in an affluent residential neighborhood steps from Mount Sinai Hospital

Tremendous frontage with heavy foot traffic

High ceilings throughout

In close proximity to the  subway train

## GROUND FLOOR



# AREA RETAIL



## CONTACT EXCLUSIVE AGENTS

**HARRISON ABRAMOWITZ**  
212.372.2467  
habramowitz@ngkf.com

**MORGAN BENTIVEGNA**  
212.916.2932  
morgan.bentivegna@ngkf.com



NGKF.COM

© 2020 NEWMARK KNIGHT FRANK RETAIL. The information contained herein has been obtained from sources deemed reliable but has not been verified and no guarantee, warranty or representation, either express or implied, is made with respect to such information. Terms of sale or lease and availability are subject to change or withdrawal without notice.