

**AVISON  
YOUNG**

**FOR LEASE**

**320 East Bay St, Charleston, SC 29401**



**Retail Space Available**

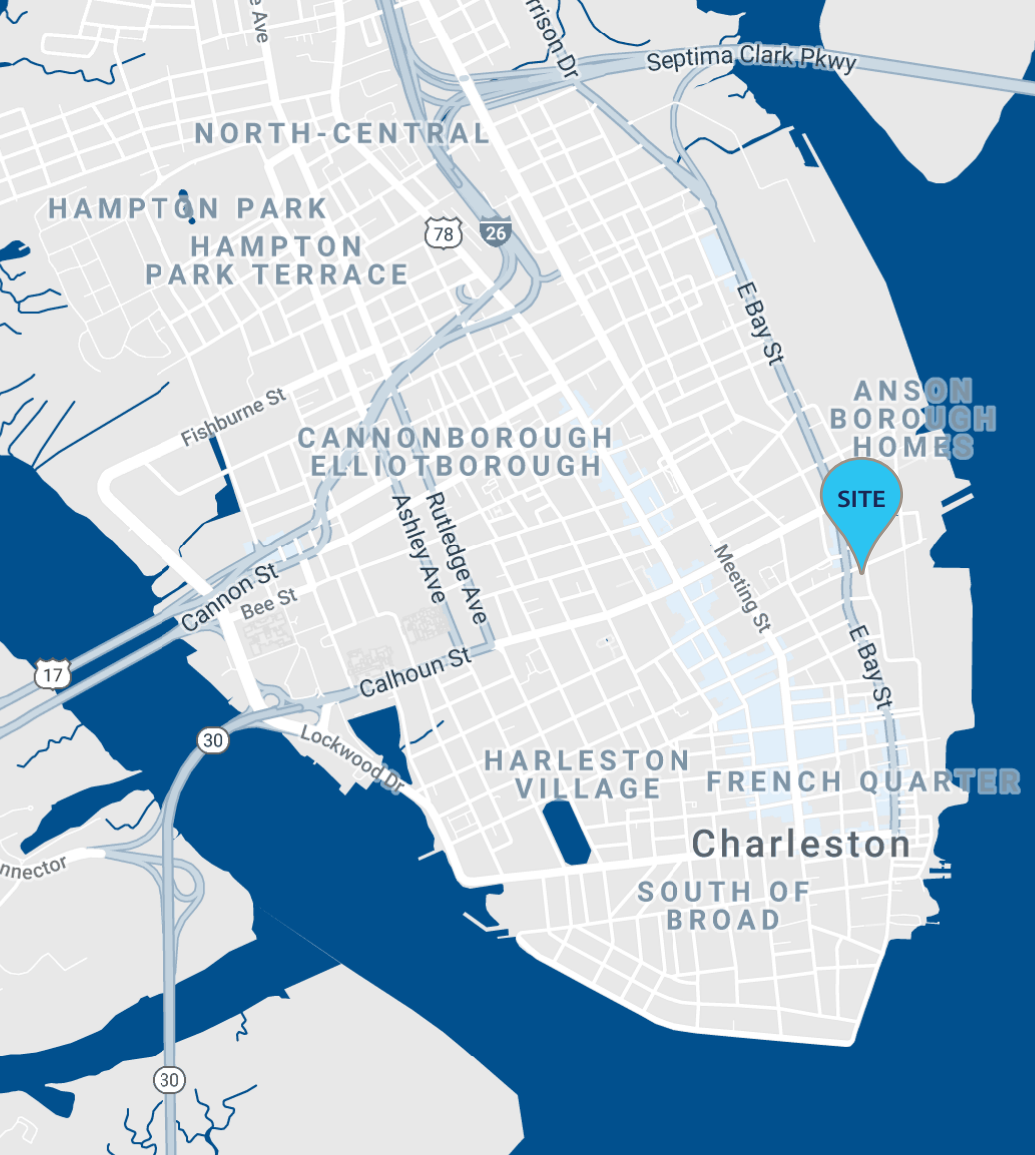
**For more information, please contact:**

**Vitré R. Stephens**

Retail & Investment Services

C 843.513.7555

[vitre.stephens@avisonyoung.com](mailto:vitre.stephens@avisonyoung.com)



# 320 East Bay

Property is a three-tenant building, with other tenants including Delta Pharmacy and a fried chicken seafood restaurant. One unit is available now:

Unit C - 2,700 sf

Unit C, with a second floor, is ideal for use as an office or retail space

Onsite parking: 20 spaces.

**320 East Bay Street Charleston, SC 29401**

## Leasing Information

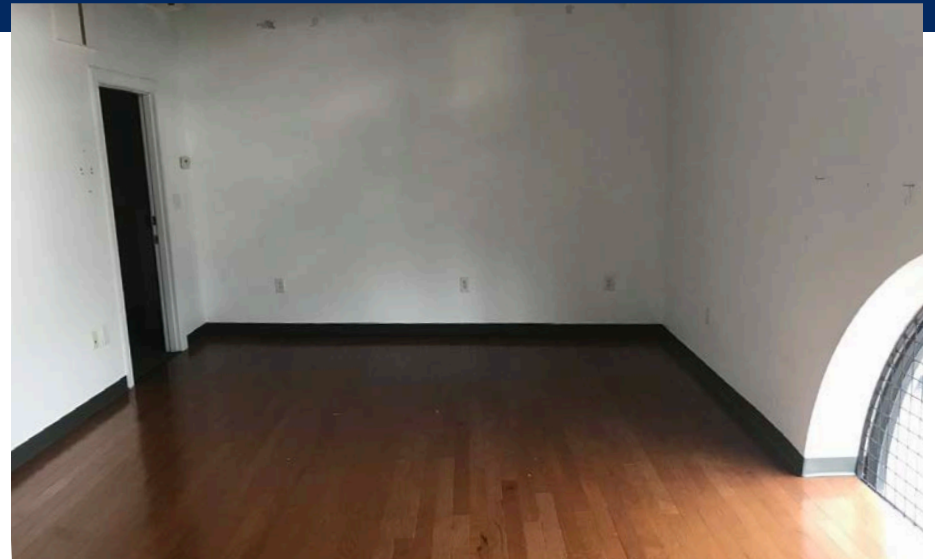
Unit	Size	Lease Rate	Lease Type	Available
C	2,700 sf	\$32.00/sf/yr	NNN	NOW

## Snapshot

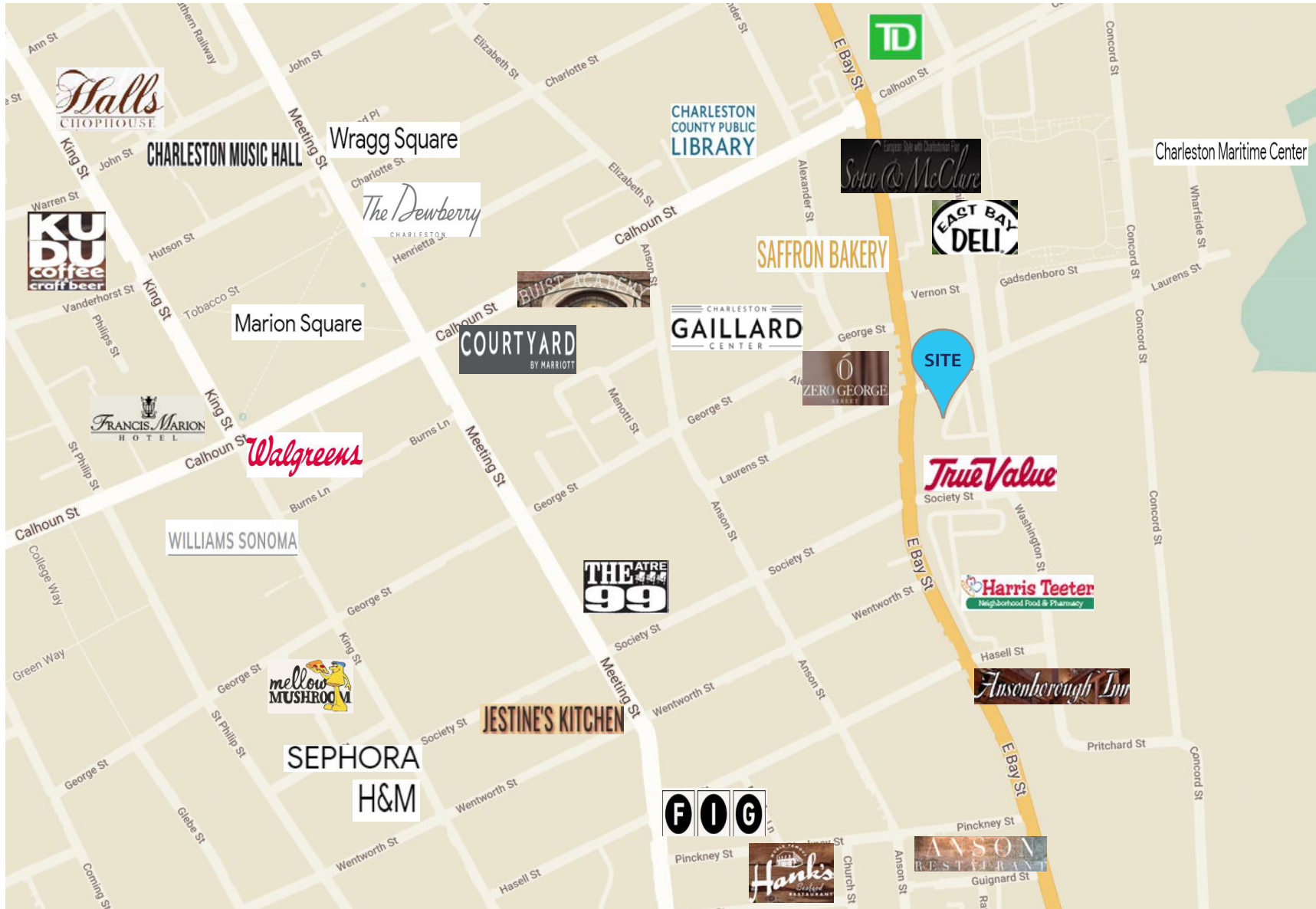
Tax Map	458-01-04-001
Year Built	1981
GLA	11,267 SF
Zoning	GB
County	Charleston
Parking	20 Spaces
NNN	\$7.23 PSF

The information contained herein was obtained from sources believed reliable, however, Avison Young makes no guarantees, warranties, or representations as to the completeness or accuracy thereof. The presentation of this property is submitted subject to errors, omissions, change of price or conditions prior to sale or lease, or withdrawal without notice. South Carolina, USA, Avison Young Offices are Owned and Operated by Avison Young - South Carolina, Inc.

## Unit C: Images



# Amenities Map



# 1 Mile Radius

16,759

Population



2.0

Average Household Size

24.7

Median Age

\$45,357

Median Household Income

7%

No High School Diploma



13%

High School Graduate



16%

Some College



64%

Bachelor's/Grad/Prof Degree

## BUSINESS



2,311

Total Businesses



32,534

Total Employees

## EMPLOYMENT



65%

White Collar



11%

Blue Collar



24%

Services

4.1%

Unemployment Rate

## INCOME



\$45,357

Median Household Income



\$39,592

Per Capita Income



\$16,119

Median Net Worth

## Households By Income

The largest group: <\$15,000 (24.1%)

The smallest group: \$150,000 - \$199,999 (5.5%)

Indicator	Value	Difference	
<\$15,000	24.1%	+13.4%	<div style="width: 24.1%;"></div>
\$15,000 - \$24,999	8.8%	-0.7%	<div style="width: 8.8%;"></div>
\$25,000 - \$34,999	10.0%	+0.4%	<div style="width: 10.0%;"></div>
\$35,000 - \$49,999	9.5%	-2.0%	<div style="width: 9.5%;"></div>
\$50,000 - \$74,999	10.7%	-6.0%	<div style="width: 10.7%;"></div>
\$75,000 - \$99,999	7.3%	-4.7%	<div style="width: 7.3%;"></div>
\$100,000 - \$149,999	9.8%	-4.3%	<div style="width: 9.8%;"></div>
\$150,000 - \$199,999	5.5%	-0.2%	<div style="width: 5.5%;"></div>
\$200,000+	14.3%	+4.0%	<div style="width: 14.3%;"></div>

# 3 Mile Radius

51,340

Population



2.1  
Average Household Size

30.4

Median Age

\$55,916

Median Household Income

7%

No High School Diploma



17%

High School Graduate



21%  
Some College



56%  
Bachelor's/Grad/Prof Degree

## BUSINESS



4,304

Total Businesses



89,350

Total Employees

## EMPLOYMENT



67%

White Collar



9%

Blue Collar



23%

Services

4.1%

Unemployment Rate

## INCOME



\$55,916

Median Household Income



\$43,594

Per Capita Income



\$45,427

Median Net Worth

## Households By Income

The largest group: <\$15,000 (18.2%)

The smallest group: \$150,000 - \$199,999 (5.6%)

Indicator	Value	Difference	
<\$15,000	18.2%	+10.6%	<div style="width: 18.2%;"></div>
\$15,000 - \$24,999	8.9%	+0.2%	<div style="width: 8.9%;"></div>
\$25,000 - \$34,999	8.6%	-1.8%	<div style="width: 8.6%;"></div>
\$35,000 - \$49,999	10.1%	-3.4%	<div style="width: 10.1%;"></div>
\$50,000 - \$74,999	13.4%	-7.4%	<div style="width: 13.4%;"></div>
\$75,000 - \$99,999	8.6%	-5.9%	<div style="width: 8.6%;"></div>
\$100,000 - \$149,999	10.4%	-2.0%	<div style="width: 10.4%;"></div>
\$150,000 - \$199,999	5.6%	-1.7%	<div style="width: 5.6%;"></div>
\$200,000+	16.1%	+11.4%	<div style="width: 16.1%;"></div>

# 5 Mile Radius

132,296

Population



2.2

Average Household Size



37.3

Median Age

\$64,914

Median Household Income



6%

No High School Diploma



18%

High School Graduate



23%

Some College



53%

Bachelor's/Grad/Prof Degree

## BUSINESS



8,338

Total Businesses



125,262

Total Employees

## EMPLOYMENT



70%

White Collar



11%

Blue Collar



19%

Services



2.9%

Unemployment Rate

## INCOME



\$64,914

Median Household Income



\$44,494

Per Capita Income



\$92,488

Median Net Worth

## Households By Income

The largest group: \$50,000 - \$74,999 (15.6%)

The smallest group: \$150,000 - \$199,999 (6.5%)

Indicator	Value	Difference	
<\$15,000	12.0%	+4.4%	
\$15,000 - \$24,999	8.2%	-0.5%	
\$25,000 - \$34,999	8.7%	-1.7%	
\$35,000 - \$49,999	10.6%	-2.9%	
\$50,000 - \$74,999	15.6%	-5.2%	
\$75,000 - \$99,999	11.4%	-3.1%	
\$100,000 - \$149,999	14.2%	+1.8%	
\$150,000 - \$199,999	6.5%	-0.8%	
\$200,000+	12.9%	+8.2%	



Thank you.

**AVISON  
YOUNG**

[avisonyoung.com](http://avisonyoung.com)

1315 Ashley River Road  
Charleston, South Carolina 29407  
O 843.725.7200  
F 843.725.7201  
Avison Young - South Carolina, Inc.

 **CANADA  
BEST  
MANAGED  
COMPANIES**

Platinum  
member