



5277 Manhattan Circle

Boulder, CO

Jaime Pletcher

jaime@gibbonswhite.com

(303) 586-5936

www.gibbonswhite.com



Property Info & Gallery



View Map

Remodeled Suites with Mountain Views - Major Leasing Incentive

Available Suite 220	1,636 sq. ft.
Available Suite 250	1,453 sq. ft.
Lease Rate / sq. ft.	\$20.00 NNN \$14.50 NNN
Expenses / sq. ft. (2023)	\$18.70*

*Including Utilities

- Year 1 Incentive Rate of Only \$14.50 NNN
- Top Floor Spaces with Modern Design & Natural Light
- Suites Feature Reception / Waiting Areas, Large Conference or Group Work Room, Private Offices, Open Areas, Kitchens, & Patio Spaces
- Remodeled Building Features an Elevator, Rooftop Terrace, Tenant Shower & On-Site Management
- Free Covered Parking, Reserved Visitor / Patient Parking & Electric Vehicle Charging Station
- Convenient South Boulder Location at Hwy 36 & Foothills Pkwy

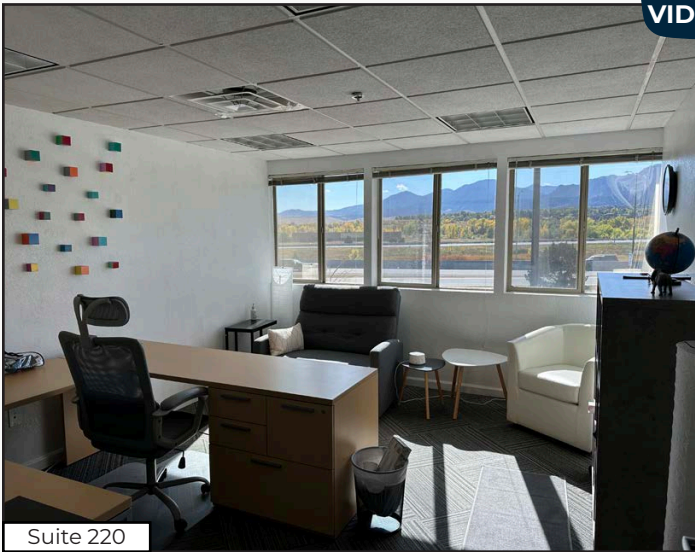
The information included has been obtained from sources believed reliable. While we do not doubt the accuracy of the information, it has not been verified and no guarantee, warranty, or representation is being made.



2305 Canyon Blvd, Suite 200, Boulder, CO 80302 - (303) 442-1040

© 2023 Gibbons-White, Inc.

Suite 220
1,636 sq. ft.

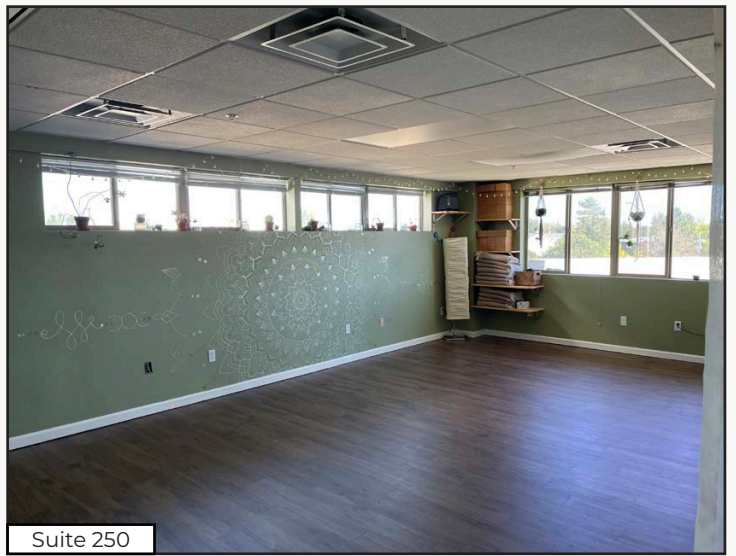
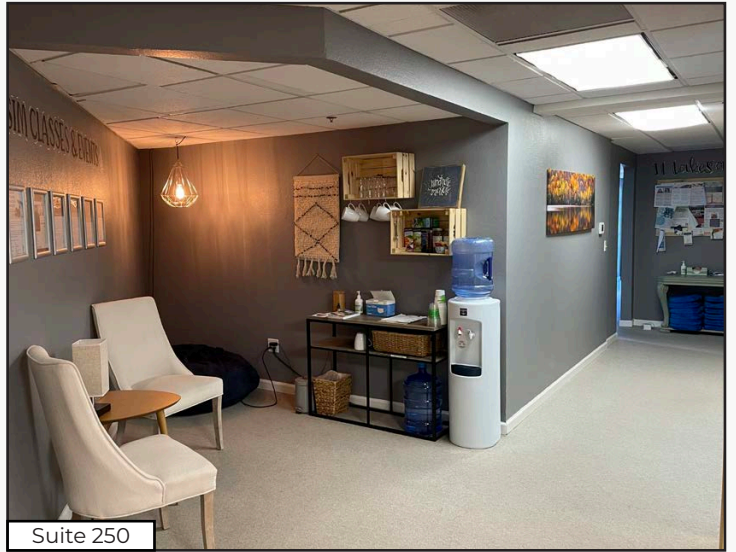
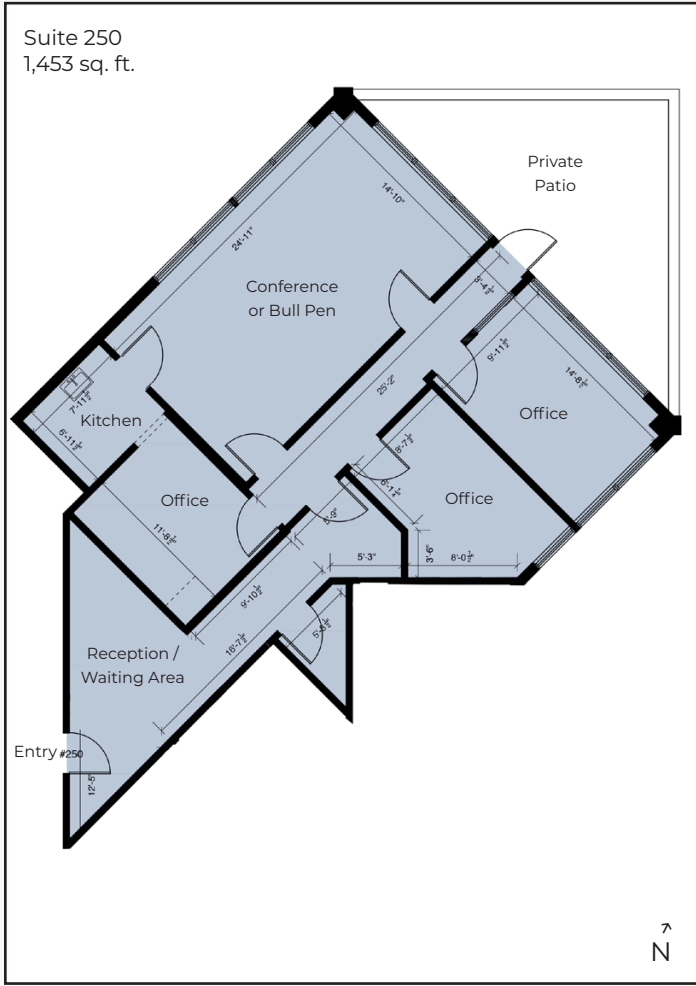


Suite 220



Suite 220

The information included has been obtained from sources believed reliable. While we do not doubt the accuracy of the information, it has not been verified and no guarantee, warranty, or representation is being made.



The information included has been obtained from sources believed reliable. While we do not doubt the accuracy of the information, it has not been verified and no guarantee, warranty, or representation is being made.