

TOLUCA LAKE CENTER

3808 W. RIVERSIDE DRIVE

BURBANK, CA



Office & Medical Space For Lease



AVAILABLE: Suite 302 - Approximately 1,813 RSF

RENTAL RATE: \$4.00prsf, FSG

- BUILDING FEATURES:**
- ▶ 3/1000 Parking at Current Building Rates
 - ▶ Building Renovations Complete
 - ▶ Close to St. Joseph's Hospital & Studios
 - ▶ Many Amenities Within Walking Distance
 - ▶ Easy Access to 134 Freeway

FOR LEASING INQUIRIES CONTACT:

JENNIFER DONALDSON
818.933.0347
LICENSE ID #01317737
jdonaldson@lee-re.com

PAULETTE TOUMAZOS
818.933.0346
LICENSE ID #00930676
ptoumazos@lee-re.com

Lee & Associates® - LA North/Ventura, Inc.
CORPORATE ID #01191898
A Member of the Lee & Associates Group of Companies

15250 Ventura Blvd., Suite 100
Sherman Oaks, CA 91403
P: 818-986-9800 F: 818-783-9260
www.lee-associates.com

No warranty or representation is made to the accuracy of the foregoing information. Terms of sale or lease and availability are subject to change or withdrawal without notice.

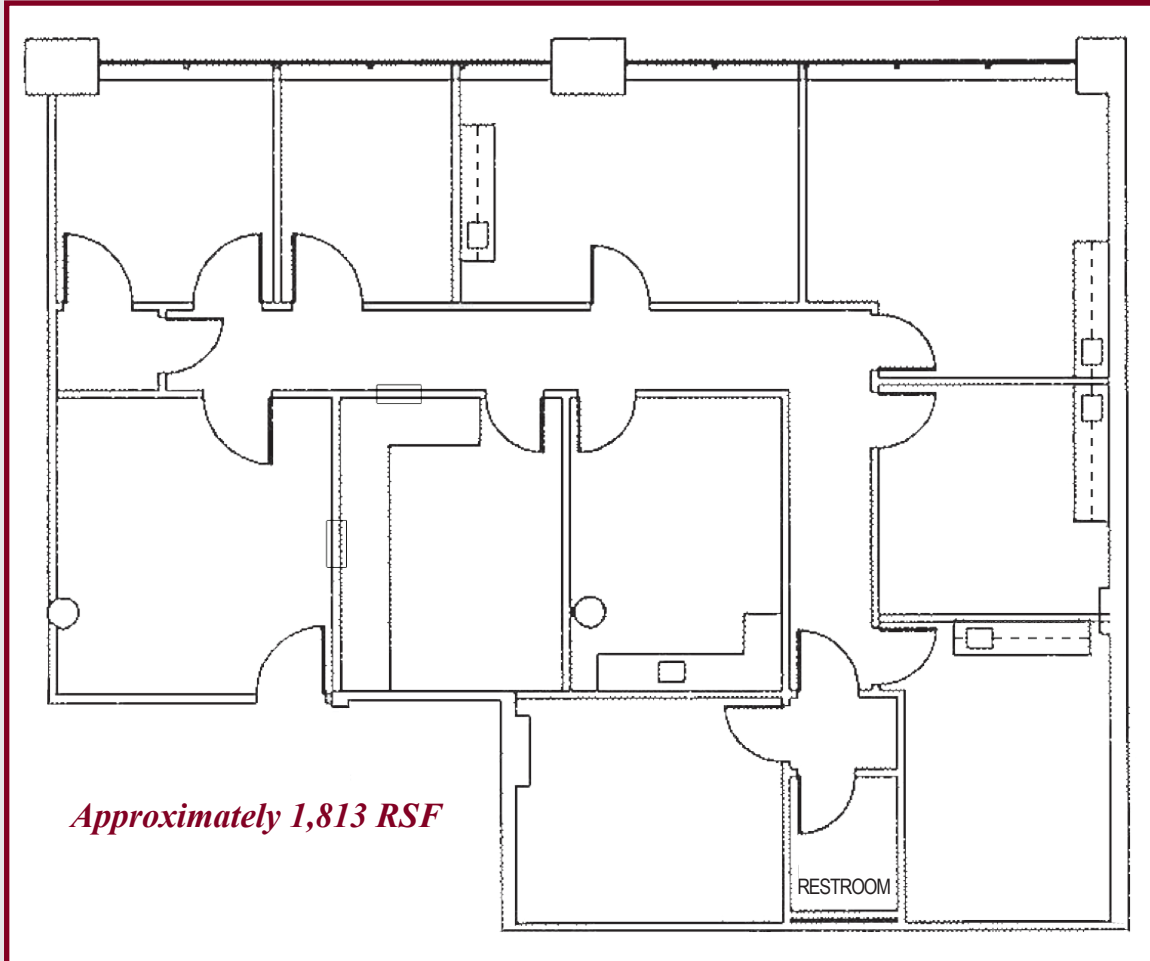
LEE & ASSOCIATES
COMMERCIAL REAL ESTATE SERVICES

TOLUCA LAKE CENTER

3808 W. RIVERSIDE DRIVE

BURBANK, CA

Office & Medical Space For Lease



FOR LEASING INQUIRIES CONTACT:

JENNIFER DONALDSON
818.933.0347
LICENSE ID #01317737
jdonaldson@lee-re.com

PAULETTE TOUMAZOS
818.933.0346
LICENSE ID #00930676
ptoumazos@lee-re.com

Lee & Associates® - LA North/Ventura, Inc.
CORPORATE ID #01191898
A Member of the Lee & Associates Group of Companies



COMMERCIAL REAL ESTATE SERVICES

