

FOR SALE
Office Division

Land for Sale

Vestavia Hills, AL

3128 Blue Lake Drive Vestavia Hills, AL 35243

Property Info:

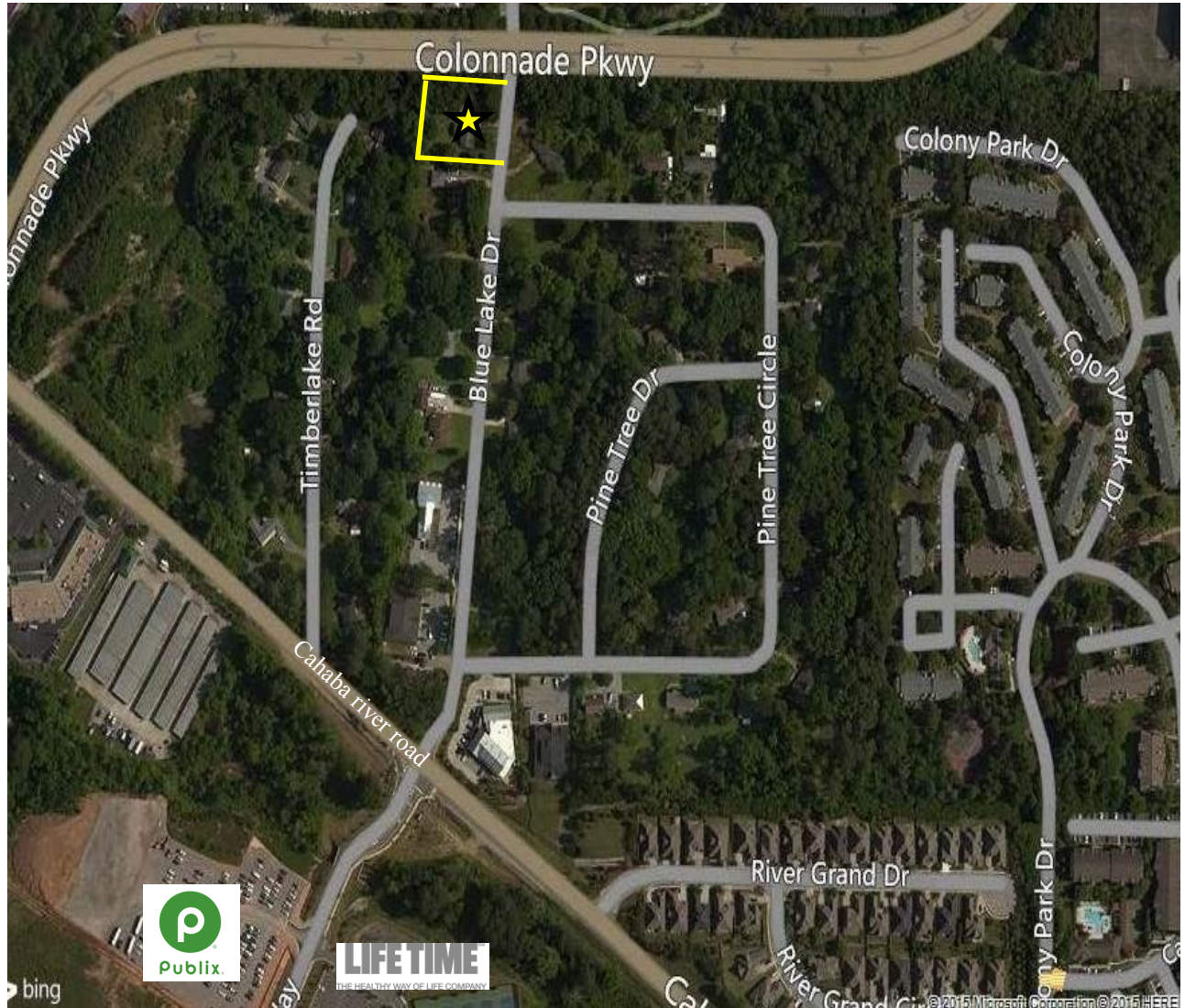
- .52 Acres
- Located in high traffic corner of Blue Lake Drive and Colonnade Parkway.
- Located near Colonnade Shopping Center, Alabama Power, Lifetime Fitness and Patchwork Farms plus several new developments in the area.
- Flat topography
- Ideal for 3,000-8,000 sf office or retail development
- Currently Zoned Residential— Surrounding community is currently being redeveloped with various office users and retailers.
- E-2 Zoning
- List Price \$499,000.00

Michael Johnson

(205) 939-8233

mjohnson@engelrealty.com

www.engelrealty.com



Engel Realty Company, LLC does not warrant the adequacy, accuracy or completeness of any information presented herein and expressly disclaims any liability for error or omissions therein. Users are responsible for evaluating the accuracy, completeness or usefulness of any information.



