

FOR LEASE

OFFICE/INDUSTRIAL DELRAY NORTH BUSINESS CENTER

1395 NW 17H AVENUE

DELRAY BEACH, FL

33445



DESCRIPTION

The subject property is conveniently located within close proximity to Interstate 95, accessible via Atlantic Avenue in the heart of Delray Beach. Situated within the beautifully manicured Delray Park of Commerce, the property offers a professional business park setting with great parking, clean image and well-maintained facilities.

FEATURES

- + ±50,488 SF Total Building Size
- + Available Space -
 - Suite 101, ±1,219 SF
 - Suite 104, ±2,900 SF
 - Suite 113, ±7,416 SF
 - Suite 114, ±2,000 SF
 - Suite 115, ±2,111 SF
 - From ±1,219 SF to ±4,111 SF to ±9,416 SF to ±11,527 SF
- + 14' - 20' Clear Height
- + Located between W. Atlantic Avenue and Woolbright Road on S. Congress Avenue with frontage along I-95
- + Situated in the Delray Park of Commerce master planned corporate park
- + Frontage, Signage and Visibility Available along I-95



CONTACT

JEFF KELLY

Executive Vice President
+1 561 393 1621
jeffrey.kelly@cbre.com

KIRK NELSON

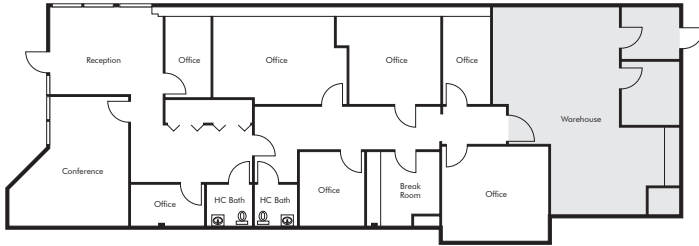
Vice President
+1 561 227 1803
kirk.nelson@cbre.com

CBRE, Inc. | Licensed Real Estate Broker

OFFICE/INDUSTRIAL SPACE FOR LEASE DELRAY N BUSINESS CENTER

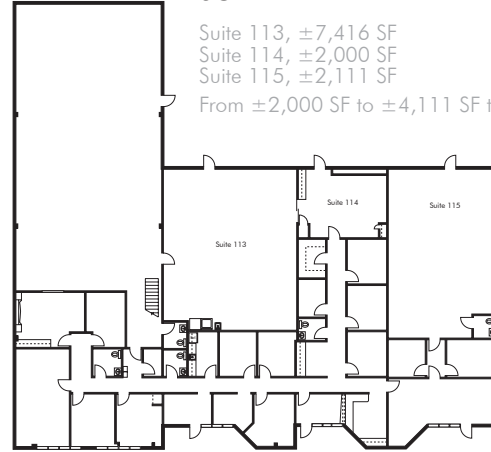
1395
NW 17TH AVENUE
Delray Beach, FL 33445

FLOOR PLANS



SUITE 104

Total 2,900 SF



SUITE 113-115

Suite 113, ±7,416 SF

Suite 114, ±2,000 SF

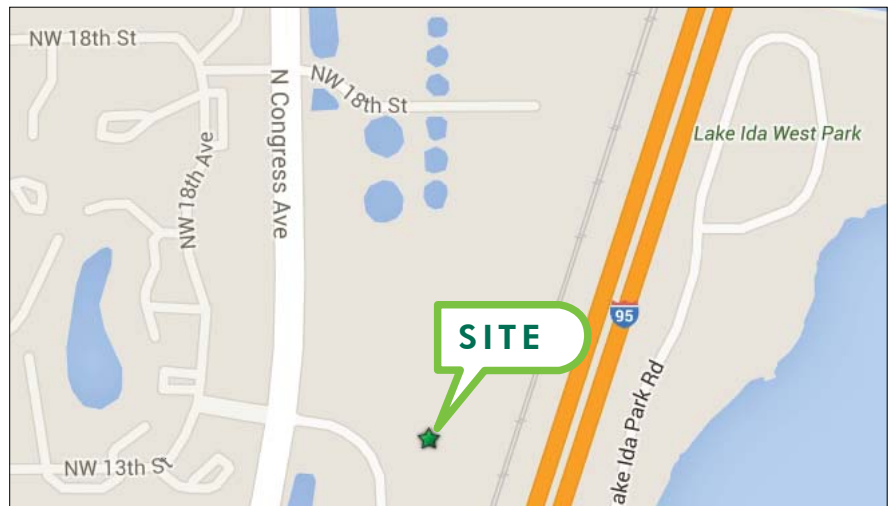
Suite 115, ±2,111 SF

From ±2,000 SF to ±4,111 SF to ±9,416 SF to ±11,527 SF

PHOTOS



LOCATION MAP



CONTACT

JEFF KELLY

Executive Vice President

+1 561 393 1621

jeffrey.kelly@cbre.com

KIRK NELSON

Vice President

+1 561 227 1803

kirk.nelson@cbre.com

CBRE, Inc. | Licensed Real Estate Broker