

Former Emery's Garden

2829 164th Street SW
Lynnwood, WA

Lynnwood Land

Fabulous location on 164th St SW, 3 blocks off I-5 and just north of Alderwood Mall

5.81 acres in Urban Center zone allowing and encouraging higher densities

90' height allowances with structured parking

Adjacent to Northpointe Corporate Campus, home of Cypress Semi Conductor, Berlex Labs and Comcast

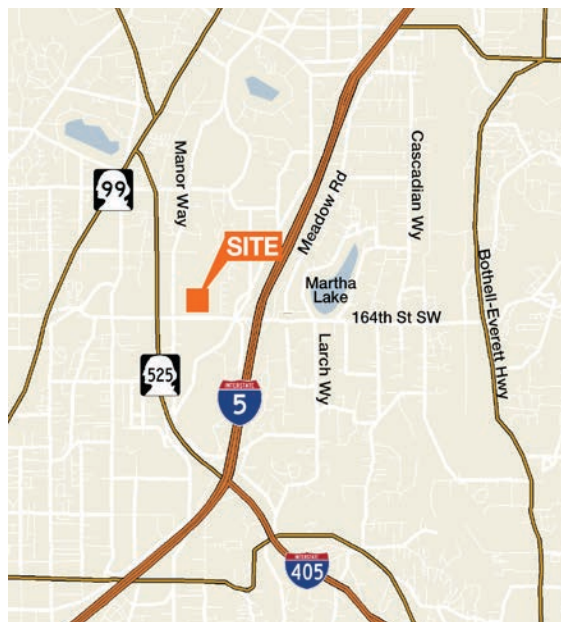
Walking distance to Ash Way Park & Ride

Territorial views

Seller is motivated



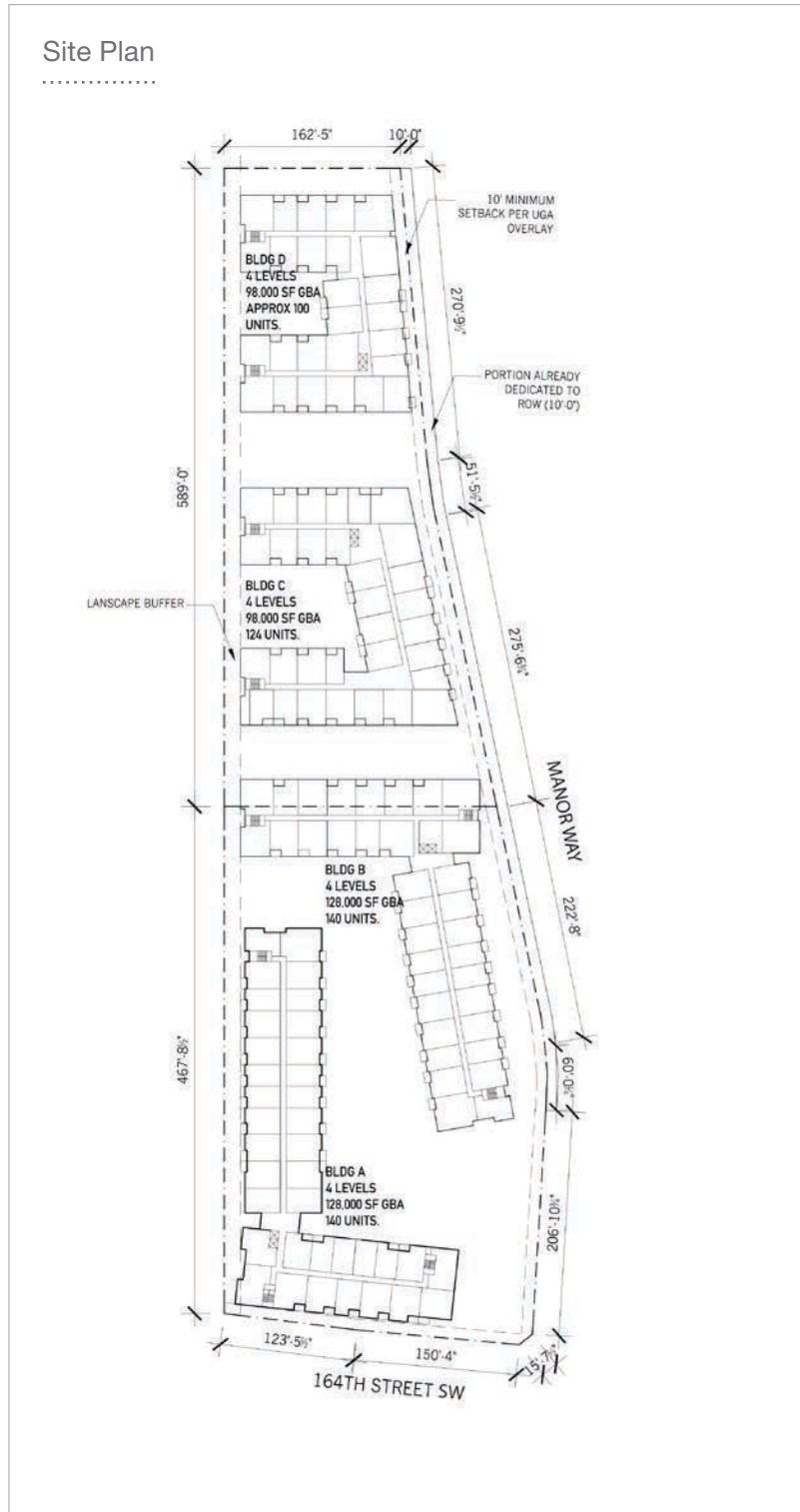
Location



Contact

Brian Kenworthy
Senior Vice President
425.450.1131
briank@kiddermathews.com

Former Emery's Garden



Contact

Brian Kenworthy
 Senior Vice President
 425.450.1131
 briank@kiddermathews.com

Former Emery's Garden

FORMER EMERY'S GARDEN

2829 164th Street SW, Lynnwood

Total Available Size	± 5.81 acres (± 253,084 SF)
Zoning	UC
Project Type	Multi-Family
Lease Rate	N/A
Sales Price	\$29.00 PSF

Property Summary and Comments

Fabulous location on 164th St SW, off I-5 and just north of Alderwood Mall. Zoned UC (Urban Center) in Snohomish County; 90' height allowance w/structured parking. Adjacent to North Pointe Business Park. Walking distance to Park & Ride. Territorial views.

Detail Description

Municipality	Snohomish County	Rail	NO
Water	To site	Will Build	
Sewer		Will Divide	NO
Electricity	To site	Topography	Level
Gas	No	Neighborhood	Lynnwood
Tax Year	2012	Taxes	\$43,159.44
AV Building	\$89,000.00	AV Land	\$2,959,500.00
AV Land	\$3,048,500		

Contact

Brian Kenworthy
Senior Vice President
425.450.1131
briank@kiddermathews.com