

**TURNKEY BREWERY
AND RESTAURANT**



SCAN HERE!

CALEB ANTHONIS

Phone: 314.647.6611 ext. 126

Caleb@ManorRealEstate.com

721 — 723 NORTH 2ND STREET

ST. LOUIS, MO 63102

1,900-4,000 S.F. | CONTACT BROKER FOR PRICING

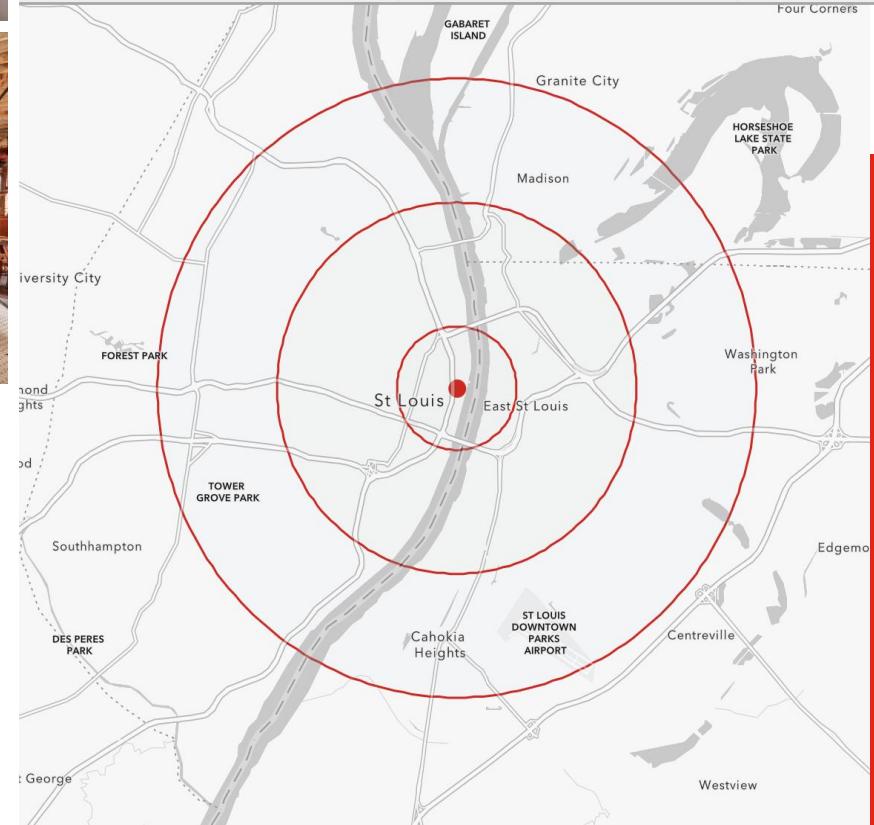


PROPERTY INFORMATION



- LOCATED IN THE HISTORIC LACLEDE'S LANDING RIVERFRONT DISTRICT
- RESTAURANT, BREWERY, AND EVENT SPACE WITH FULL RESTAURANT AND BREWERY FF&E AVAILABLE
- THIS 3-STORY PROPERTY INCLUDES 3 SUITES — SUITE 200 (4,000 S.F.), SUITE 210 (1,900 S.F.) AND SUITE 310 (1,900 S.F.).
- PROPERTY CAN BE DEMISED TO ALLOW FOR MULTIPLE TENANTS
- ADJACENT TO THE ST. LOUIS ARCH GROUNDS
- FORMERLY HOME TO THE MORGAN STREET BREWERY
- BUILDING SIGNAGE AVAILABLE ALONG NORTH 2ND STREET AND MORGAN STREET
- SEVERAL LARGE MULTI-FAMILY REDEVELOPMENTS ARE PLANNED FOR THE IMMEDIATE AREA

DEMOGRAPHICS	1 MILE	3 MILES	5 MILES
POPULATION	10,430	68,059	205,618
HOUSEHOLDS	5,583	30,160	89,631
AVERAGE HH INCOME	\$75,723	\$59,298	\$60,336



SCAN HERE!

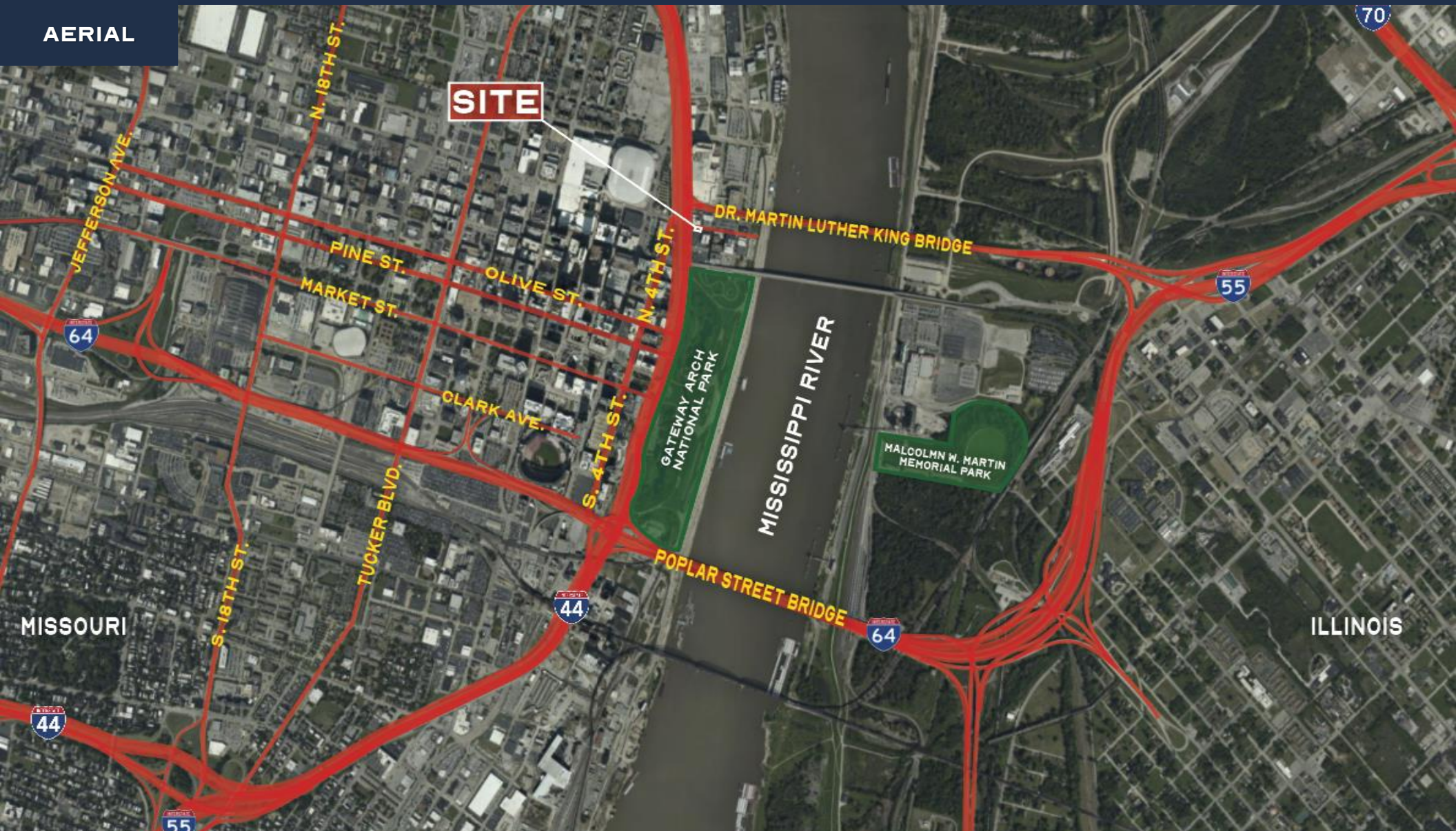
CALEB ANTHONIS

Phone: 314.647.6611 ext. 126
Caleb@ManorRealEstate.com



**721 — 723 NORTH 2ND STREET
 ST. LOUIS, MO 63102
 1,900-4,000 S.F. | CONTACT BROKER FOR PRICING**

AERIAL



SCAN HERE!



CALEB ANTHONIS

Phone: 314.647.6611 ext. 126

Caleb@ManorRealEstate.com

721 — 723 NORTH 2ND STREET
ST. LOUIS, MO 63102

1,900-4,000 S.F. | CONTACT BROKER FOR PRICING