

# 1474 N MILWAUKEE AVENUE

wicker park / chicago, il



MID-AMERICA<sup>®</sup> URBAN

AVAILABLE MARCH 2021





# 1474 N MILWAUKEE AVENUE

wicker park / chicago, il

## SPACE DETAILS

### ADDRESS

1474 North Milwaukee Avenue  
Chicago, IL 60622

### AVAILABILITY

3,100 RSF Ground Floor  
3,000 SF Basement

### NEIGHBORING TENANTS

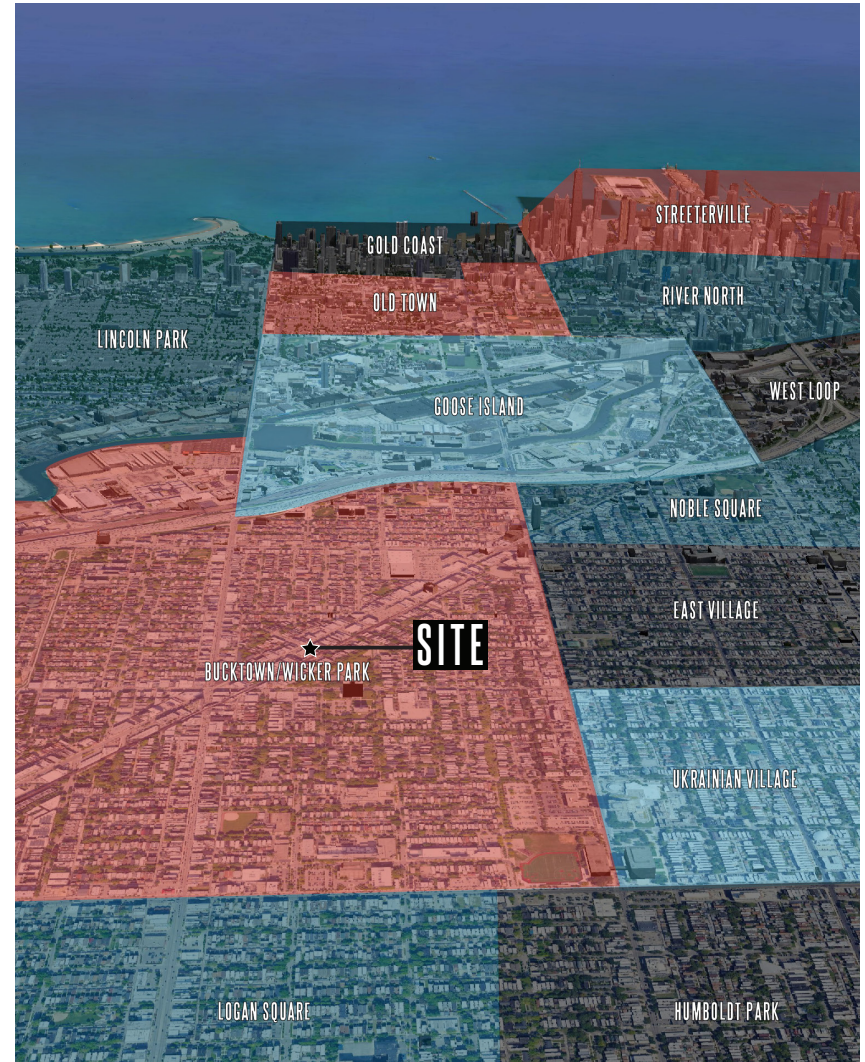
Round 2, Jeni's Ice Cream, Sweetgreen,  
Buffalo Exchange, Umami Burger, Kizuki  
Ramen, Barry's Bootcamp (coming soon)

### DEMOGRAPHICS

	.5M	1M	1.5M
AVG HOUSEHOLD INCOME	\$169,612	\$144,048	\$137,128
POPULATION	19,143	63,789	126,608
DAYTIME POPULATION	19,225	61,926	130,025

### FEATURES

- Opportunity to join a unique mix of international, national and local retailers on Wicker Park's Milwaukee Avenue Retail Corridor (aka "The Hipster Highway")
- Near the Damen Blue Line 'L' Stop with more than 2.1M riders annually
- Within walking distance of The 606, Chicago's High Line trail
- Surrounded by a unique mix of international, national and local retailers
- Basement storage space included
- Two parking spaces included in rear. Additional parking spaces negotiable across the alley.





# 1474 N MILWAUKEE AVENUE

wicker park / chicago, il

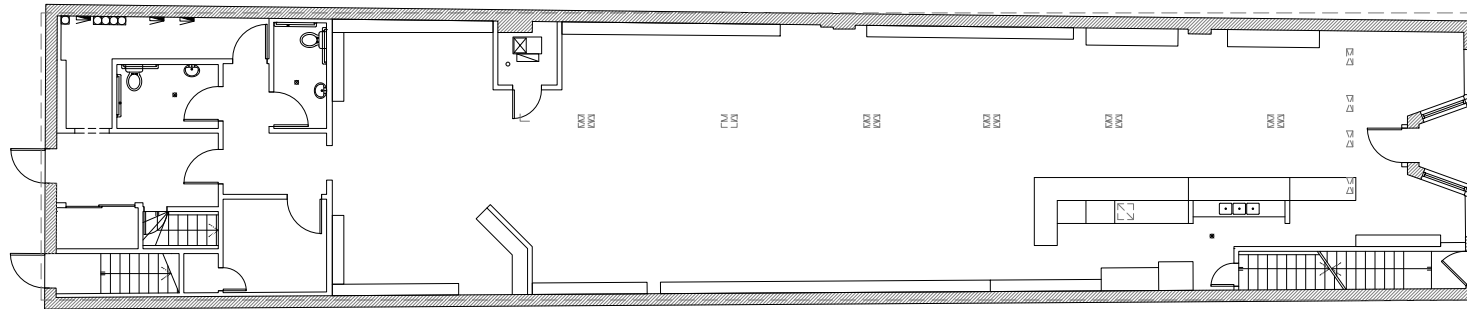
ADDITIONAL PHOTOS



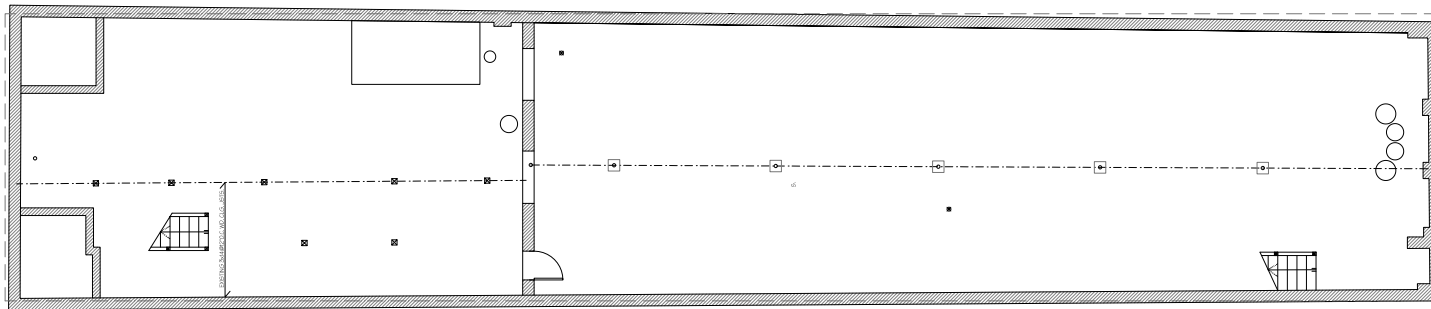
# 1474 N MILWAUKEE AVENUE

wicker park / chicago, il

## FLOOR PLAN



GROUND FLOOR



BASEMENT

N MILWAUKEE AVENUE - 12,300 VPD

## SPACE DETAILS

3,100 RSF Ground Floor  
3,000 SF Basement











let's talk. **BIG IDEAS?**

**LARA KEENE**  
Mid-America Real Estate Corp.  
630.481.4038  
LKeene@MidAmericaGrp.com

**WESTIN KANE**  
Mid-America Real Estate Corp.  
630.954.7447  
WKane@MidAmericaGrp.com

 **MID-AMERICA<sup>®</sup> URBAN**

