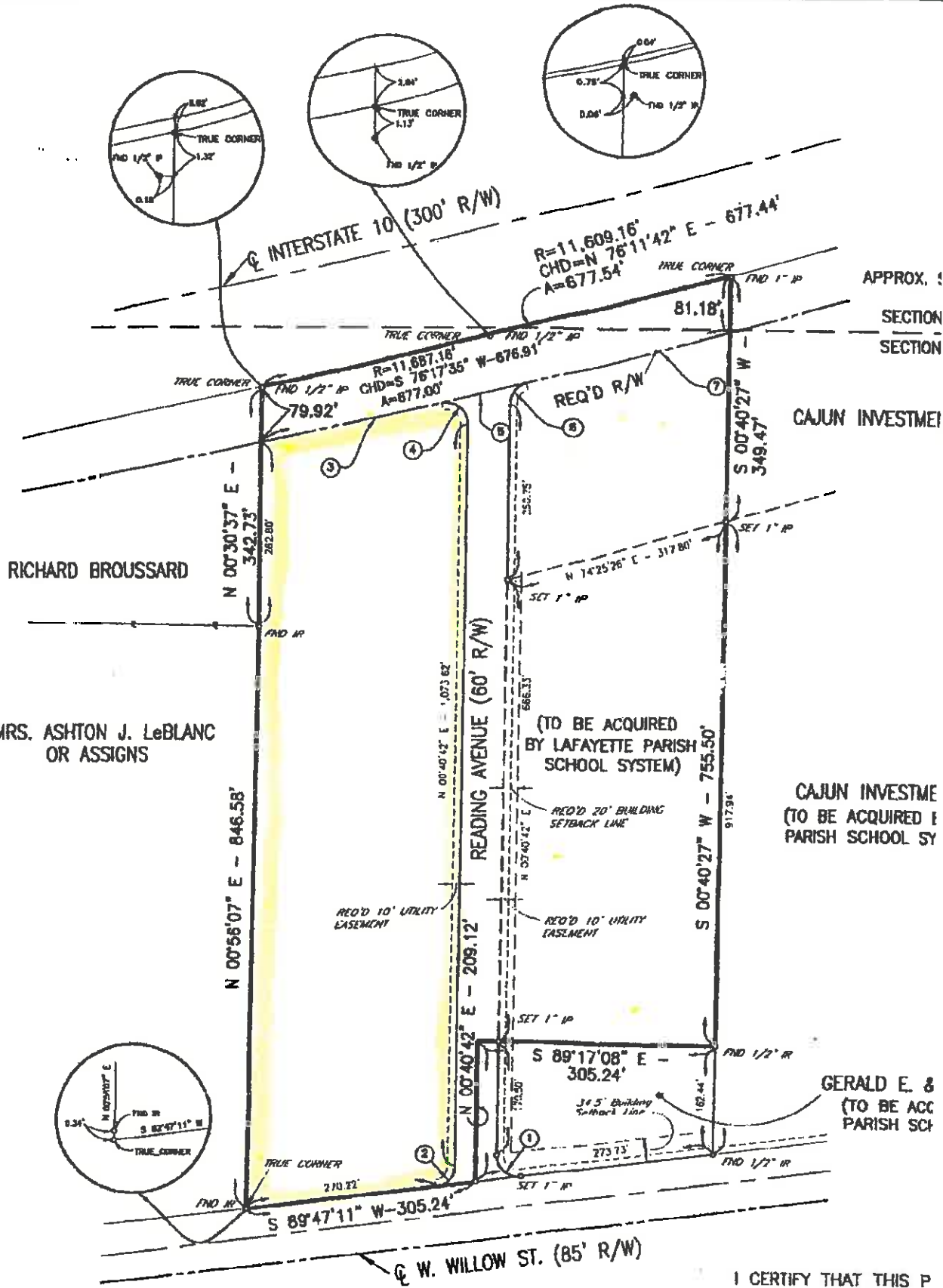


1606 W. Willow

SCALE: 1" = 200'



REQUIRED RIGHT OF WAY FOR READING AVENUE	62,882 SQ. FT.
REQUIRED RIGHT OF WAY	52,827 SQ. FT.
REMAINING AREA	625,989 SQ. FT.
TOTAL AREA	741,698 SQ. FT.

I CERTIFY THAT THIS PLAT IS AN ACTUAL GROUND SURVEY WITH NO ENCHROACHMENTS OR EASEMENTS SHOWN WITHOUT WAY ACROSS ANY OF THE LINES EXCEPT AS SHOWN.

STATE OF LOUISIANA
 GERALD A. D
 Reg. No. 1

CURVE DATA