

Crescent VI

8400 East Crescent Parkway, Greenwood Village, CO

ICONIC DTC CLOCKTOWER BUILDING



PROPERTY HIGHLIGHTS

- Desirable north DTC location
- Elegant lobby featuring stone floors, 14 foot ceilings and textured walls
- Abundant local amenities including restaurants, hotels and outdoor space
- Quick and easy access to I-25 and I-225
- Executive covered parking available
- LEED Certified and Energy Star labeled

NEW HEALTHY AMENITIES NOW AVAILABLE!



FITNESS CENTER



FRESH FOOD MICRO MARKET

For leasing information please contact:

Matt Smith | 303.996.8460
msmith@premisescommercial.com

Johnny Neff | 720.743.6399
jneff@premisescommercial.com

PREMISES
PREMISES COMMERCIAL REAL ESTATE, LLC
WWW.PREMISESCOMMERCIAL.COM

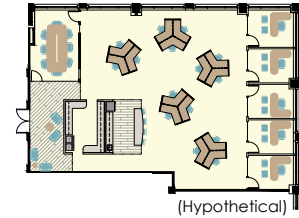
Crescent VI

8400 East Crescent Parkway, Greenwood Village, CO

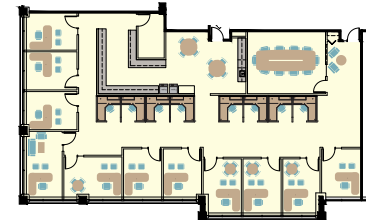
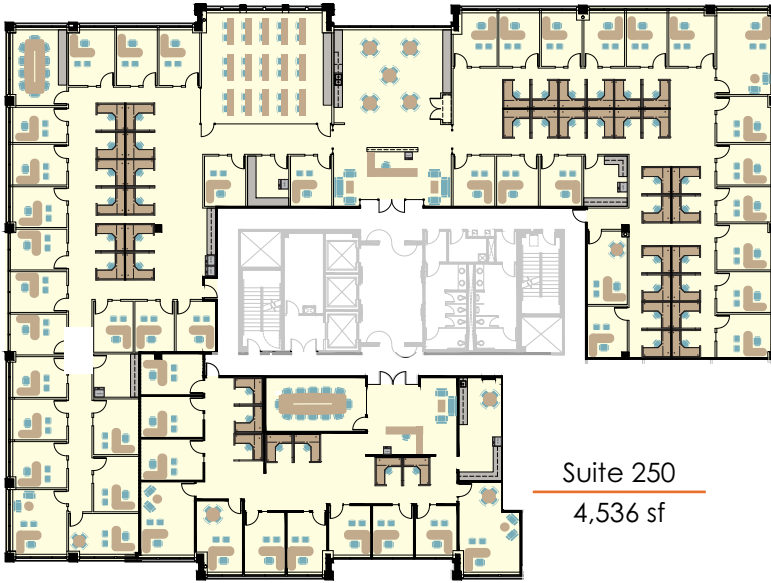
Suite 101
1,992 sf



Suite 150
4,024 sf



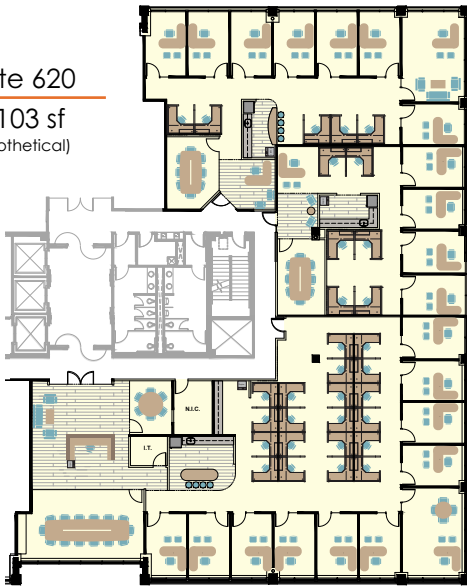
Suite 200
15,389 sf



Suite 410
4,508 sf

Suite 250
4,536 sf

Suite 620
3,103 sf
(Hypothetical)



Suite 630
2,131 sf
(Hypothetical)

Suite 640
6,246 sf
(Hypothetical)

Suite 650
11,480 sf
(Hypothetical)



For leasing information please contact:

Matt Smith | 303.996.8460
msmith@premisescommercial.com

Johnny Neff | 720.743.6399
jneff@premisescommercial.com

The information contained herein, while not guaranteed, has been secured from sources we believe to be reliable. Different brokerage relationships are available which include Seller/Landlord Agency, Buyer/Tenant Agency and Transaction Broker. Vector Property Services is acting in this capacity as Landlord's/Sublessor's Agent, unless otherwise agreed, and owes its fiduciary allegiance to Landlord/Sublessor as defined by Colorado Real Estate Commission.

PREMISES
PREMISES COMMERCIAL REAL ESTATE, LLC
WWW.PREMISESCOMMERCIAL.COM