

Seattle Downtown

1700 Seventh Ave, Suite 2100, Seattle, WA 98101



PRIVATE OFFICES

Highly professional private offices for individuals and teams that are flexible and scaled for growth.

MEETING ROOMS

Spacious, well-appointed meeting rooms with on-site administrative support. Available for an hour, day or longer.

VIRTUAL OFFICES

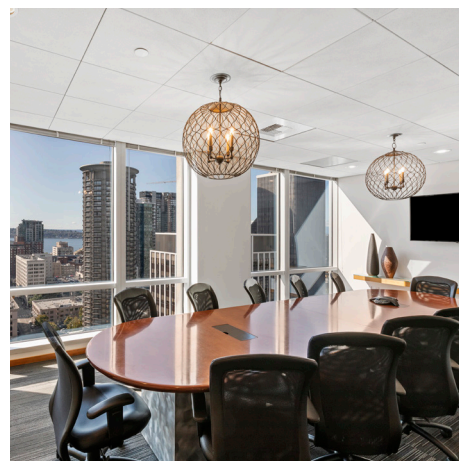
Establish a business presence with mail handling, phone answering or meeting room time.

ABOUT THIS LOCATION

Seattle Downtown provides gorgeous 21st floor views of Elliot Bay, the Space Needle, Lake Union, Mount Baker, the Cascade Mountains and the surrounding cityscape. This well-appointed, recently renovated, Class-A property is also within walking distance of Pacific Place Mall and Westlake Center. Located between Stewart Street and Olive Way, it's also within minutes of I-5 Freeway.

CONTACT US

Let's touch base! Contact the on-site General Manager at 206-357-8400 or SEAmanger@premierworkspaces.com to schedule a tour.



Seattle Downtown

1700 Seventh Ave, Suite 2100, Seattle, WA 98101



PREMIER AMENITIES

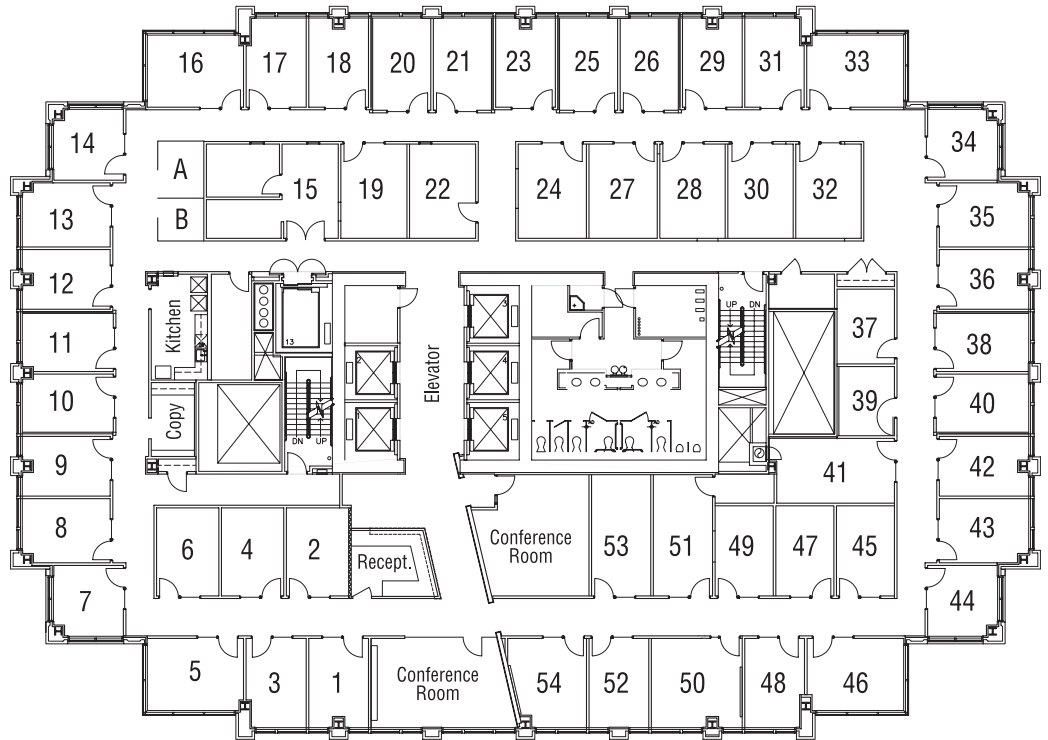
Our private suites can be easily customized to fit your desired aesthetic and brand.

- Private Offices
- Team Rooms
- High Speed Internet
- Telephone Answering
- Mail Collection
- Equipped Kitchen
- Day Offices
- Meeting Rooms
- Daily Janitorial
- Furnished or Unfurnished

PREMIER DIFFERENCE

We've been perfecting the professional workspace for over 17 years.

- Highly-Professional Atmosphere
- On-Site Manager & Support Staff
- Scalable Solutions for Individuals and Teams
- On-Site Billing
- 90+ Locations Nationwide



NEARBY AMENITIES

Seattle is known for its beautiful landscapes and innovative business climate. It's also home to major corporations including Amazon, Microsoft, Starbucks, and Nordstrom.

Property Amenities:

- Blueacre Seafood
- Café (10th floor with Outdoor Access)
- Starbucks
- Blueacre Seafood Restaurant
- Building Parking

Nearby Amenities:

- City of Seattle
- Pacific Place Mall
- ZUM Fitness
- Pike Place Market
- Amazon HQ
- Grand Hyatt Hotel
- South Lake Union Tech Hub
- Seattle Art Museum
- Seattle Public Library
- US District Court
- Washington State Convention Center
- WA Department of Revenue
- Westlake Center

Nearby Transit:

- Freeways – I-5, 520, I-90
- LINK Light Rail
- Air – Seattle/Tacoma Airport (SEA)
- Bus – Sound Transit