

FOR SUBLEASE >

SEATTLE DISTRIBUTION CENTER



6779 East Marginal Way South | Seattle, Washington 98108



AVAILABILITY & FEATURES

- » 5,996 SF total available
- » 1,340 SF office
- » 26' clear height
- » 4 dock high loading positions, 1 with ramp
- » Sublease term through 3/31/2018



MATT MCGREGOR, SIOR
Executive Vice President
+1 206 624 7401
matt.mcgregor@colliers.com

BILL CONDON, SIOR
Executive Vice President
+1 206 624 7400
bill.condon@colliers.com

COLLIERS INTERNATIONAL
601 Union Street, Suite 5300
Seattle, Washington 98101
www.colliers.com/seattle

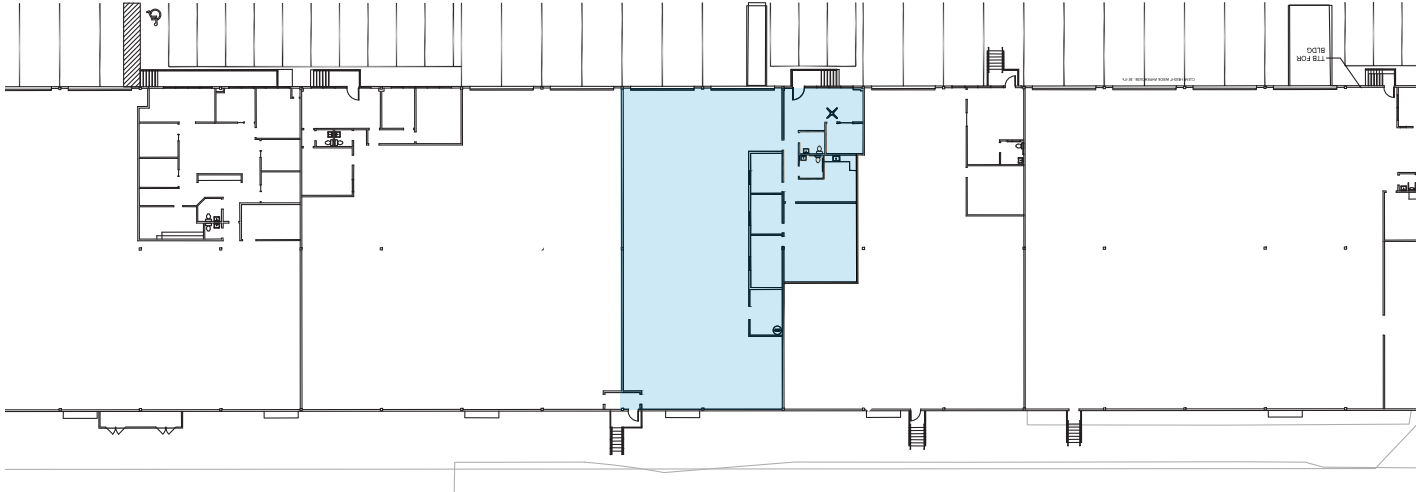
FOR SUBLEASE >

SEATTLE DISTRIBUTION CENTER



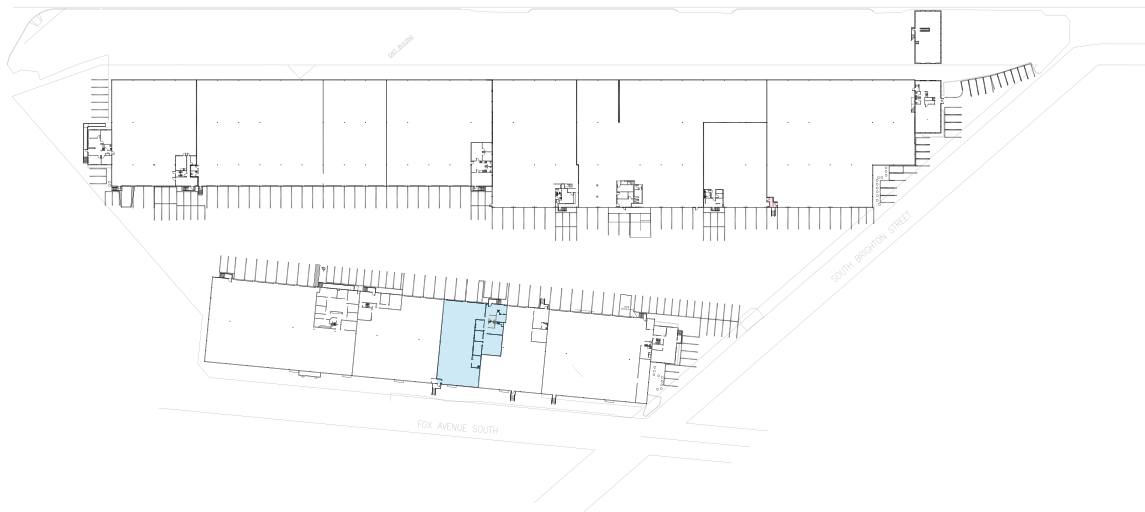
6779 East Marginal Way South | Seattle, Washington 98108

SUITE 6779 | 5,996 SF



SITE PLAN

EAST MARGINAL WAY SOUTH



This document has been prepared by Colliers International for advertising and general information only. Colliers International makes no guarantees, representations or warranties of any kind, express or implied, regarding the information including, but not limited to, warranties of content, accuracy and reliability. Any interested party should undertake their own inquiries as to the accuracy of the information. Colliers International excludes unequivocally all inferred or implied terms, conditions and warranties arising out of this document and excludes all liability for loss and damages arising there from. Colliers International is a worldwide affiliation of independently owned and operated companies. This publication is the copyrighted property of Colliers International and /or its licensor(s). © 2016. All rights reserved.

MATT MCGREGOR, SIOR
Executive Vice President
+1 206 624 7401
matt.mcgregor@colliers.com

BILL CONDON, SIOR
Executive Vice President
+1 206 624 7400
bill.condon@colliers.com

COLLIERS INTERNATIONAL
601 Union Street, Suite 5300
Seattle, Washington 98101
www.colliers.com/seattle