

FREESTANDING BUILDING

1049 Cass Avenue
Woonsocket, Rhode Island



LOCATION: Ideally located at a three way intersection with a traffic light on the corner of Cass Avenue and Mendon Road (Route 122) on the Cumberland/Woonsocket line.

TOTAL LAND: 4,369 +/- square feet of land.

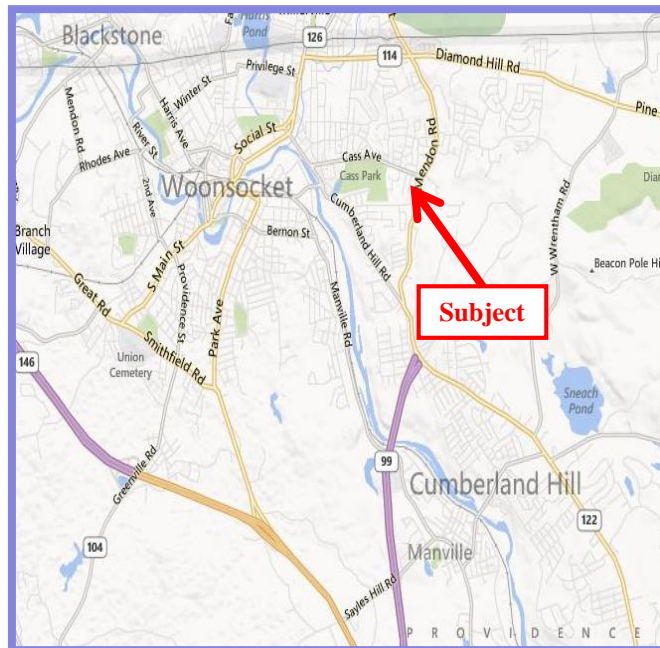
TOTAL BLDG: 1,793 square feet

AREA TENANTS: CVS Pharmacy, Woonsocket High School is within a half mile and Woonsocket Hospital is within a mile.

SPACE: Turn-Key Restaurant

PARKING: 10 +/- parking spaces.

ZONED: C-1 commercial.



FOR MORE INFORMATION CONTACT:
Dan Feiner and Joseph Mardo



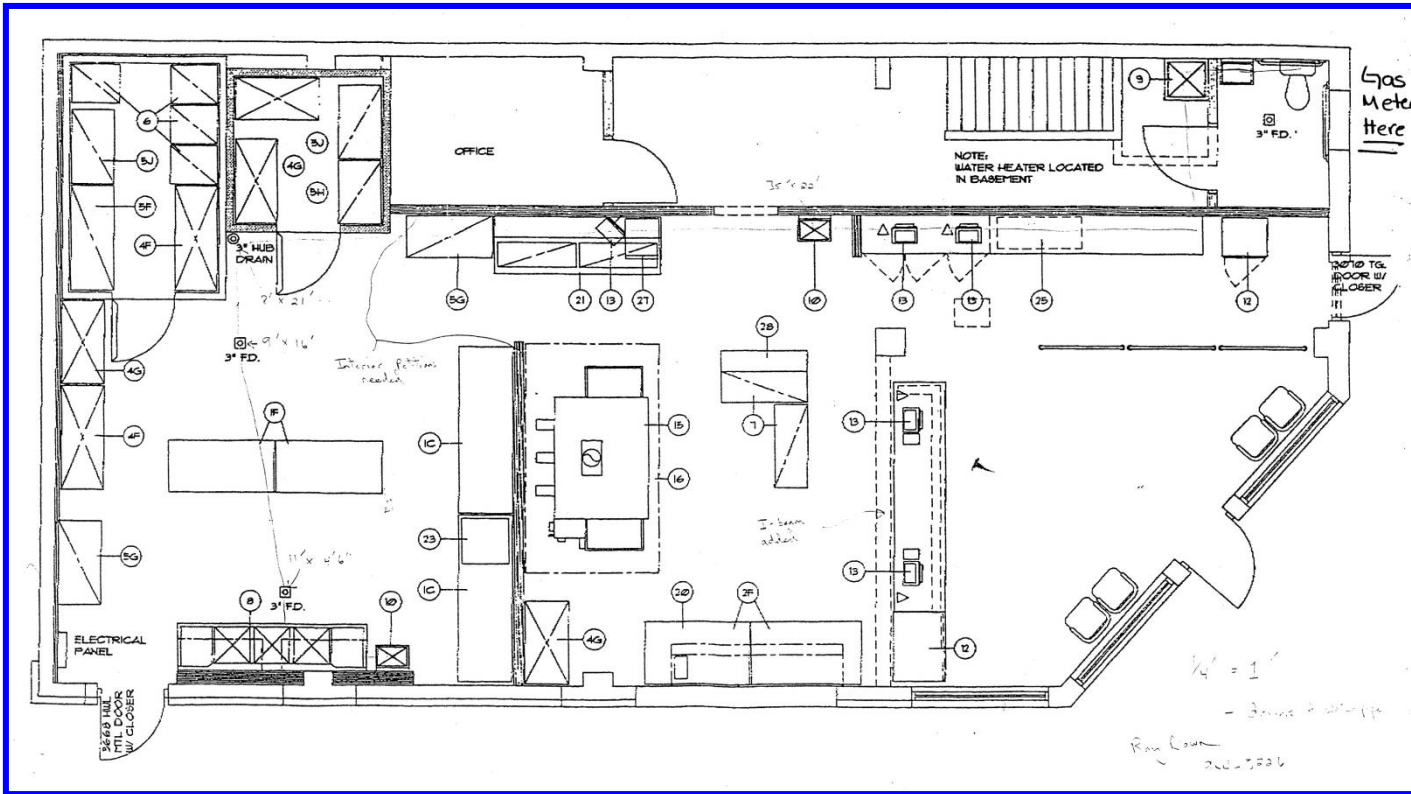
THE DISCOVERY GROUP, INC.

UNLOCKING OPPORTUNITIES
ONE INVESTMENT AT A TIME

dfeiner@TheDiscoveryGroupInc.com ~ jmardo@TheDiscoveryGroupInc.com
101 Plain Street, 1st Floor Suite 100, Providence, Rhode Island 02903
(401)729-8000 phone ~ (401)729-4300 fax ~ www.TheDiscoveryGroupInc.com

FREESTANDING BUILDING

1049 Cass Avenue
Woonsocket, Rhode Island



FOR MORE INFORMATION CONTACT:

Daniel Feiner and Joseph Mardo

The information contained herein is for informational purposes only and no representations, warranties and/or guarantees are being made as to the current or future conditions of the above property. Current conditions must be independently confirmed. All information is subject to change and verification and no liability for errors or omissions is assumed.



THE DISCOVERY GROUP, INC.

UNLOCKING OPPORTUNITIES
ONE INVESTMENT AT A TIME

