



8235 Douglas Ave
Suite 720
Dallas, Texas 75225
T 214.378.1212
venturedfw.com

ALPHA PLAZA FOR LEASE

NWQ ALPHA RD & INWOOD RD
DALLAS, TX

RYAN SMITH RSMITH@VENTUREDFW.COM | TONYA HAGOOD THAGOOD@VENTUREDFW.COM

LOCATION

NWQ ALPHA RD AND INWOOD RD
DALLAS, TX

SIZE

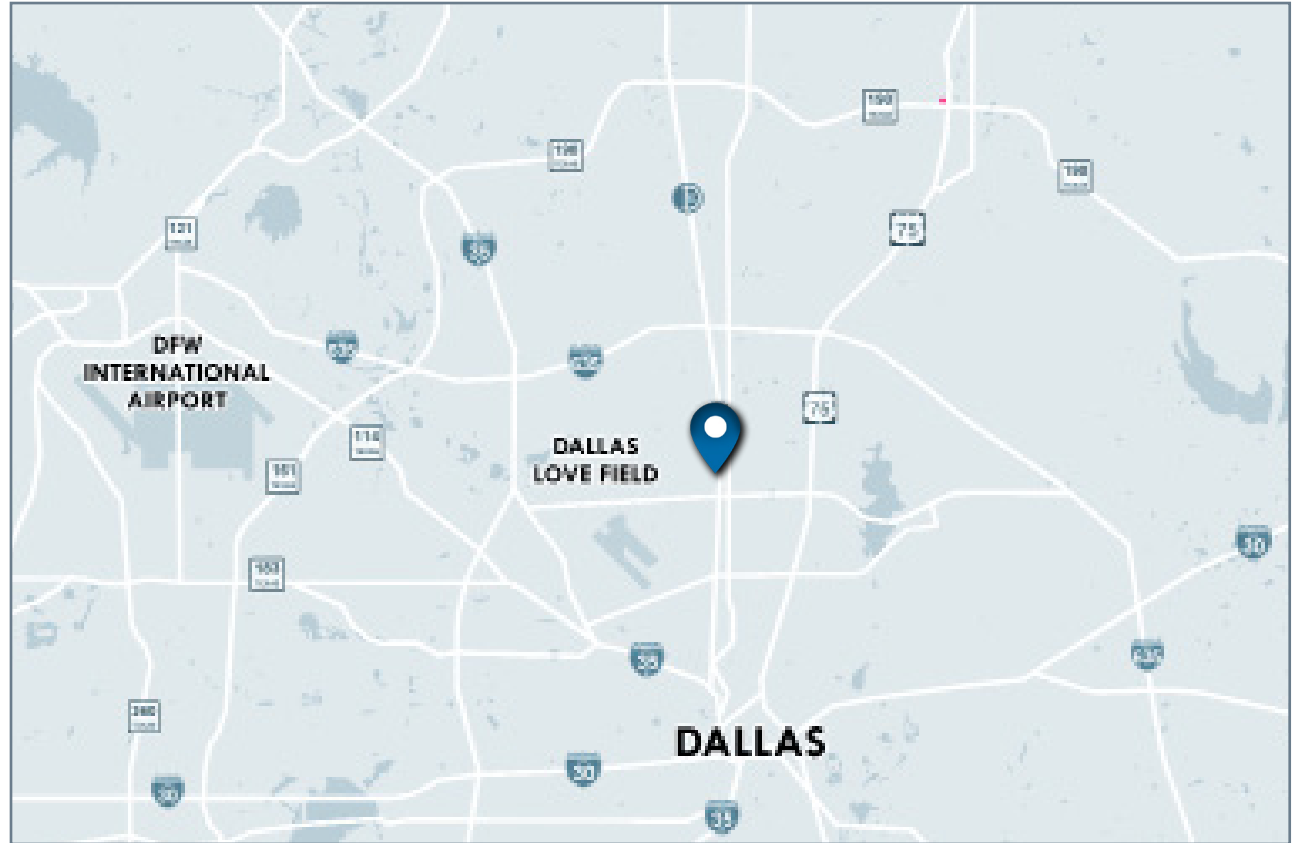
BUILDING 1	BUILDING 2
22,690 SF	52,694 SF

AVAILABLE SPACES

SUITE 205	SUITE 220
6,600 SF	3,880 SF
SUITE 285	SUITE 290
4,807 SF	3,688 SF

TRAFFIC COUNTS

ALPHA RD	INWOOD RD
21,123 VPD 2014	20,134 VPD 2014



PROPERTY HIGHLIGHTS

- ★ 75,000 SF RETAIL CENTER
- ★ NEWLY RENOVATED 2017
- ★ LOCATED 1/2 MI FROM GALLERIA

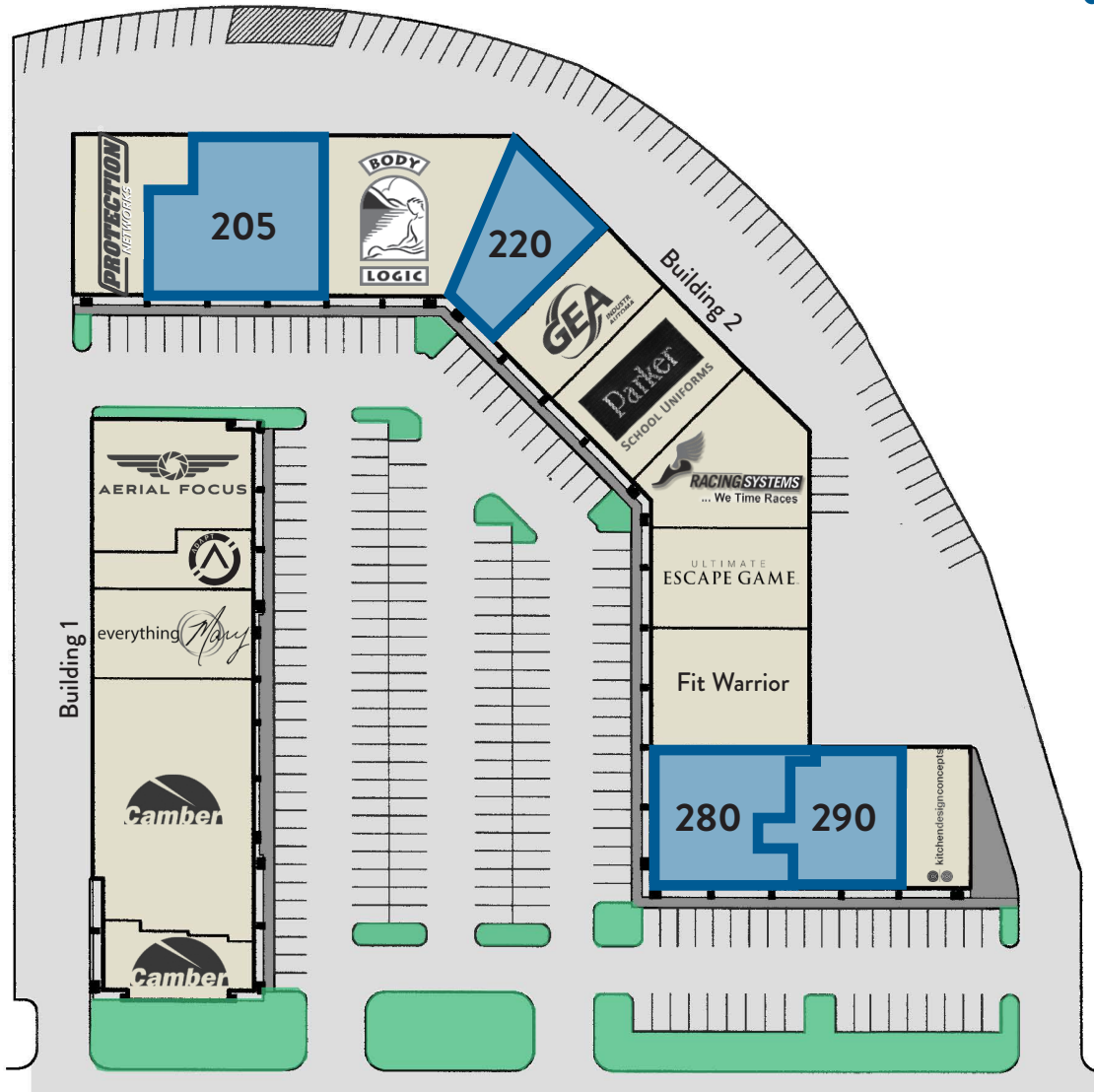
2017 DEMOGRAPHIC SUMMARY

	1 MILE	2 MILES	3 MILES
EST. POPULATION	22,421	118,791	356,451
EST. DAYTIME POPULATION	49,033	152,662	339,100
EST. AVG. HH INCOME	\$66,848	\$103,032	\$100,148

AREA ATTRACTIONS



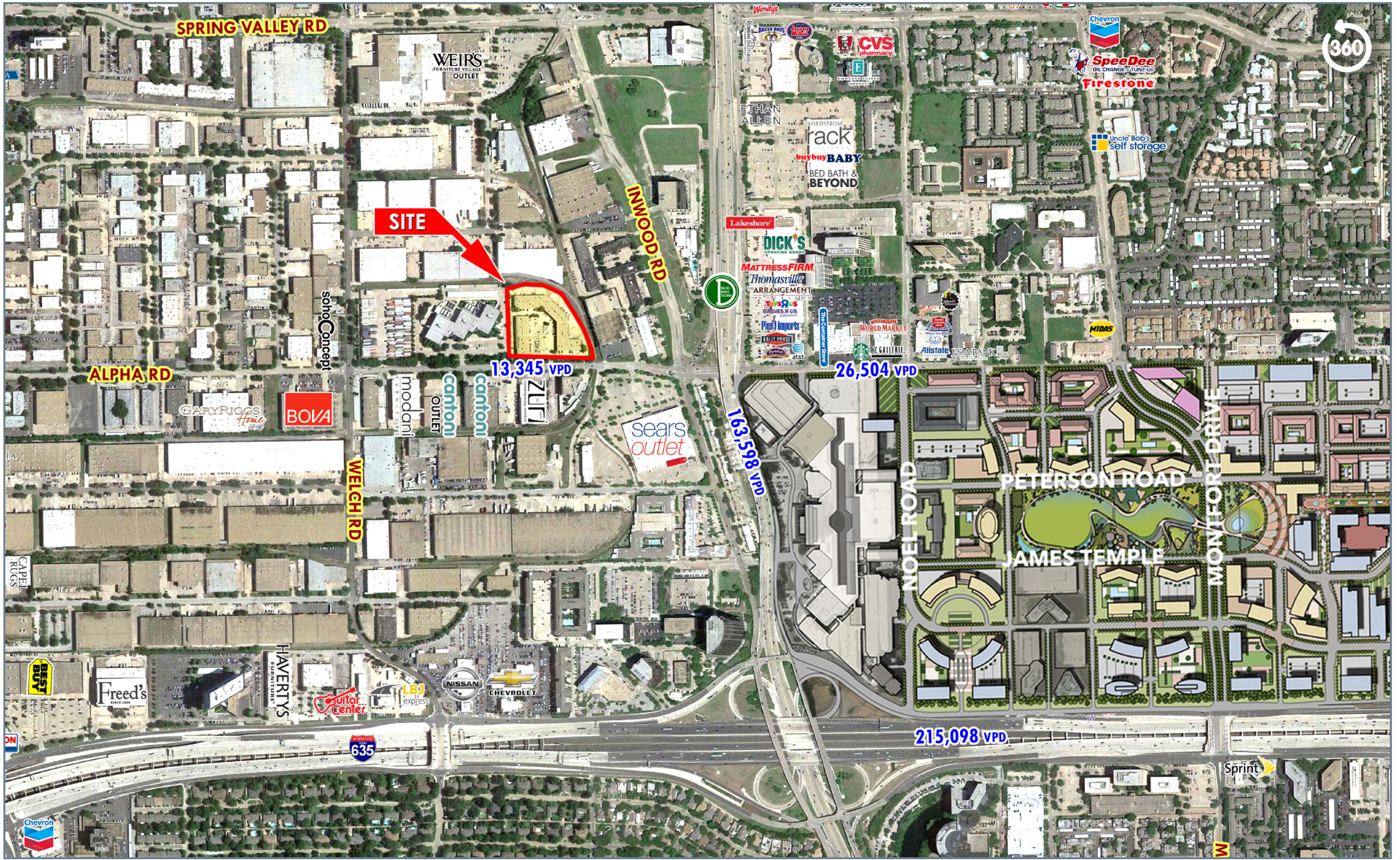
ULTIMATE
ESCAPE GAME.



UNIT TENANTS

SF

200	Protection Networks	3,340
205	AVAILABLE	6,600
210	Body Logic	6,300
220	AVAILABLE	3,880
240	GEA of Texas	3,360
250	Parker School Uniforms	5,040
260	Racing Systems	4,183
270	Fit Warrior	4,000
275	Ultimate Escape Game Dallas	4,800
285	AVAILABLE	4,807
290	AVAILABLE	3,688
295	Kitchen Design Concepts	2,696
100	Camber Corporation	2,466
110	Camber Corporation	9,874
125	Everything Mary	3,600
135	Adapt Strength & Conditioning	1,890
155	Aerial Focus	4,860







8235 Douglas Ave
Suite 720
Dallas, TX 75225
T 214.378.1212
venturedfw.com

RYAN SMITH
Vice President
214.378.1212
rsmith@venturedfw.com

TONYA HAGOOD
Senior Vice President
214.378.1212
thagood@venturedfw.com