

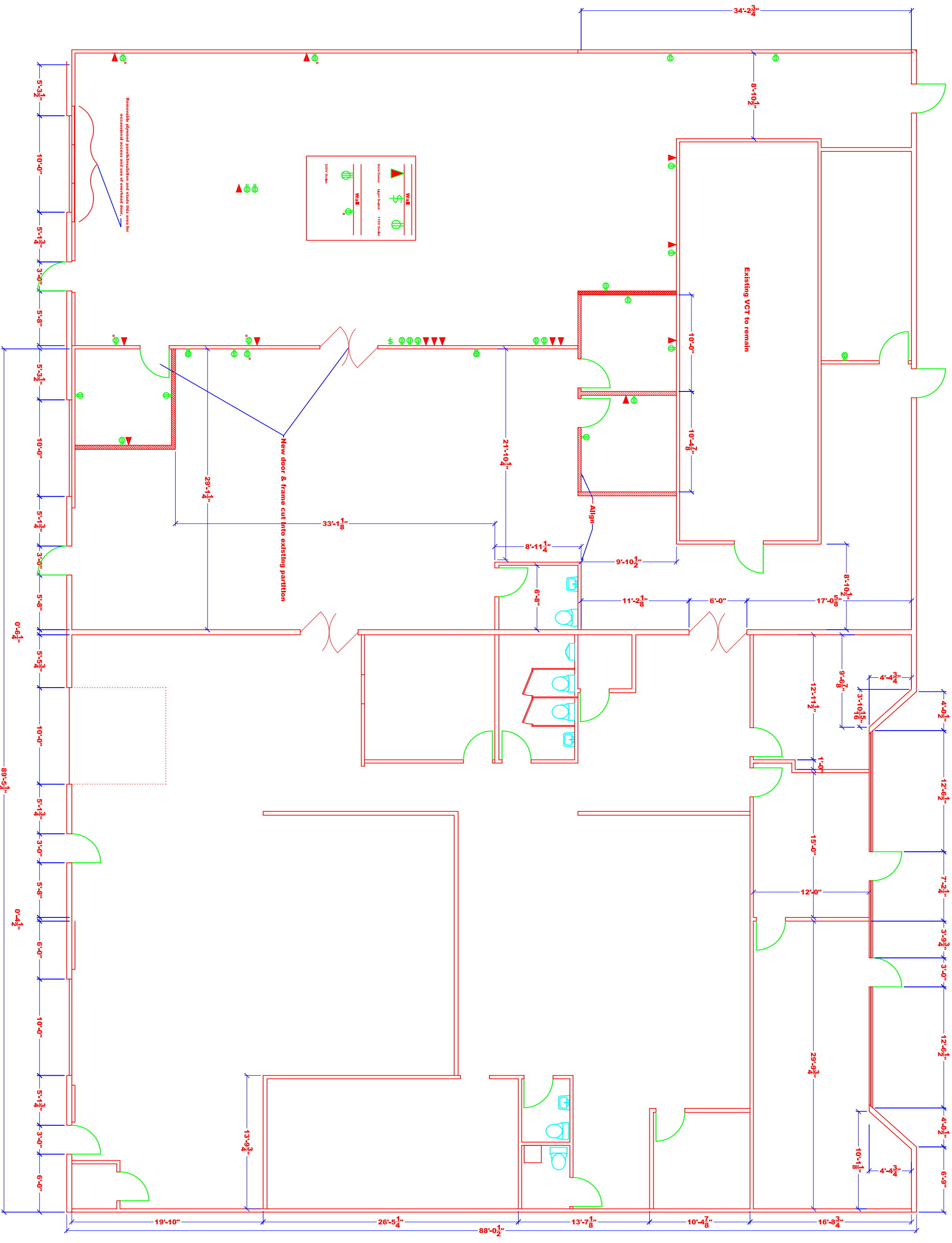
WALL	
	Out-Door
	Light Inlet
	100% Outlet
WALL	
	200% Outlet

Removable plywood partition and studs 18x4 used for occasional access and use of overhead door.

New door & frame cut into existing partition

Existing VCT to remain

Align



WALL	
	Out-Door
	Light Inlet
	100% Outlet
WALL	
	200% Outlet

Removable plywood partition and studs 18x4 used for occasional access and use of overhead door.

New door & frame cut into existing partition

Existing VCT to remain

Align