



FOR SALE



**±28
ACRES**

Carey Road

WESTFIELD, IN 46074

PROPERTY HIGHLIGHTS

±28 Acres

Utilities nearby

Westfield Schools

Zoned Residential

Pipeline easement runs southwest to
Northeast on the property

Sale Price: \$1,050,000



MATT KITE, J.D.

Associate
+1 317 616 3981
matt.kite@cushwake.com

BO LEFFEL

Senior Director
+1 317 639 0441
bo.leffel@cushwake.com

One American Square, Suite 1800 | Indianapolis, IN 46282
Main +1 317 639 0515 | Fax +1 317 639 0504
cushmanwakefield.com

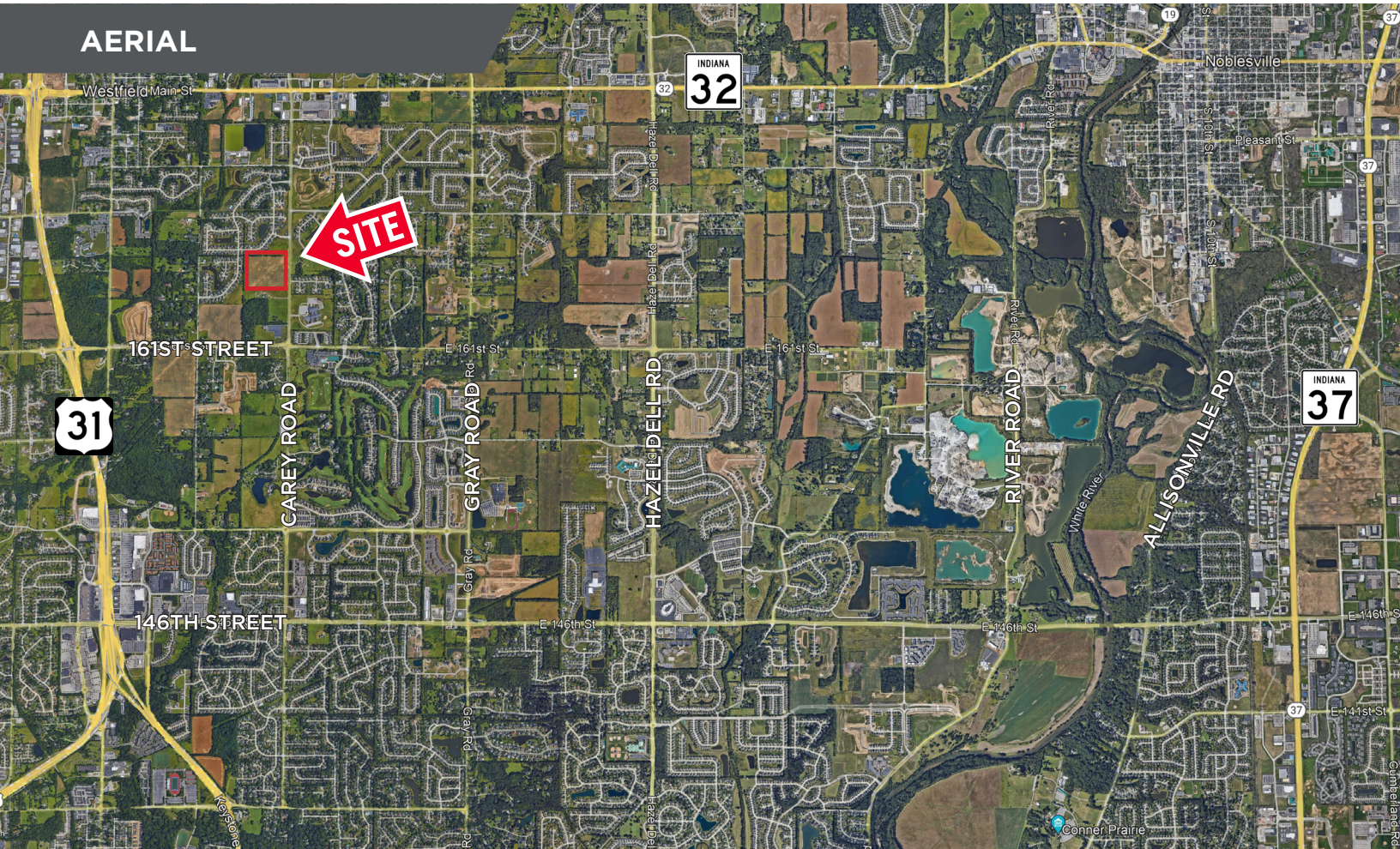
©2021 Cushman & Wakefield. All rights reserved. The information contained in this communication is strictly confidential. This information has been obtained from sources believed to be reliable but has not been verified. No warranty or representation, express or implied, is made as to the condition of the property (or properties) referenced herein or as to the accuracy or completeness of the information contained herein, and same is submitted subject to errors, omissions, change of price, rental or other conditions, withdrawal without notice, and to any special listing conditions imposed by the property owner(s). Any projections, opinions or estimates are subject to uncertainty and do not signify current or future property performance.

±28 ACRES

Carey Road

WESTFIELD, IN 46074

AERIAL



Demographics

	1 Mile	3 Mile	5 Mile
Population	4,977	52,314	133,247
AVG. HH Income	\$134,039	\$129,462	\$130,950
Daytime Population	1,898	29,541	78,343

Traffic Counts

161st Street:	9,060 ADT
US 31:	52,782 ADT
SR 32:	16,762 ADT

MATT KITE, J.D.

Associate
+1 317 616 3981
matt.kite@cushwake.com

BO LEFFEL

Senior Director
+1 317 639 0441
bo.leffel@cushwake.com

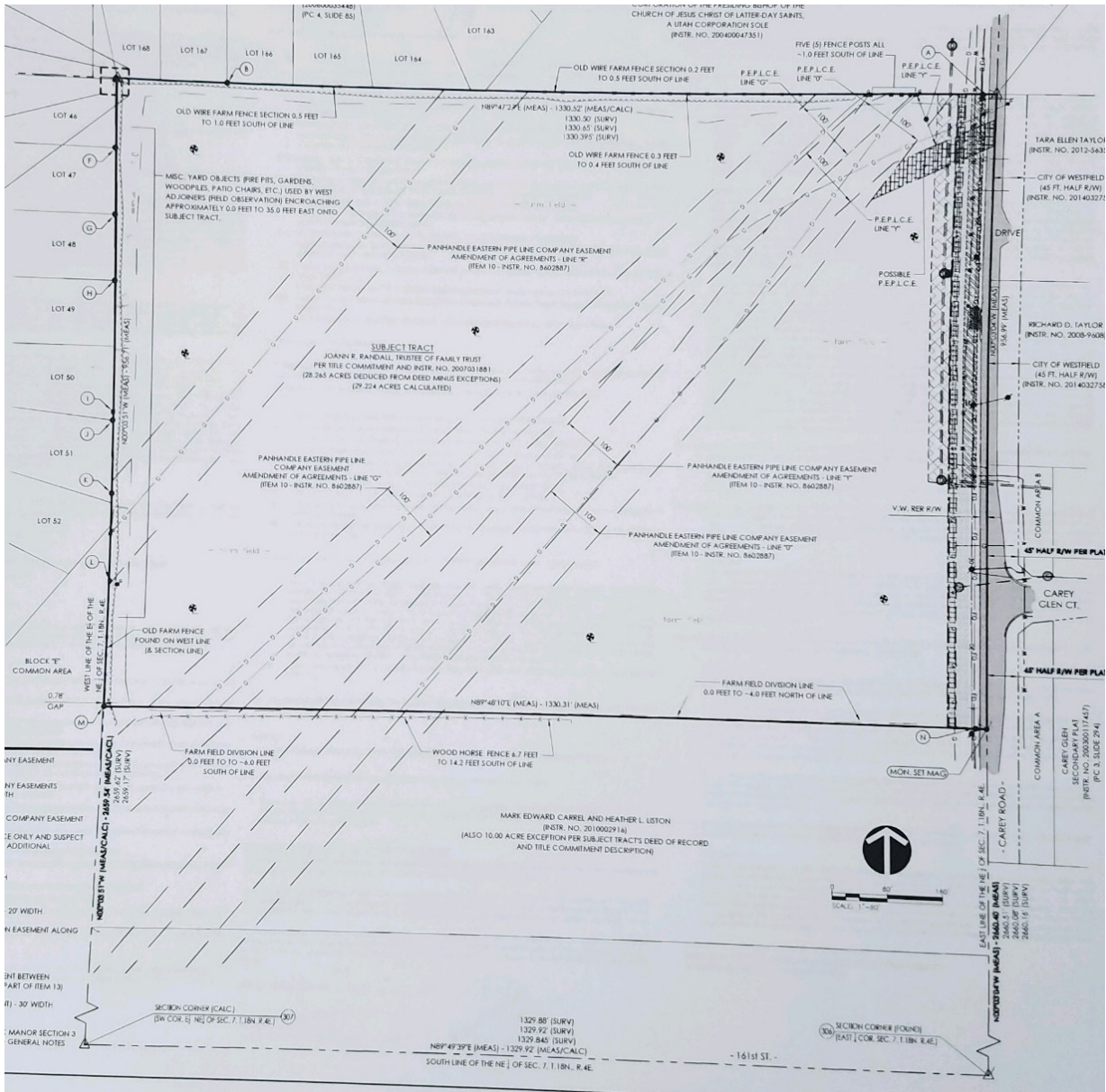
One American Square, Suite 1800
Indianapolis, IN 46282
Main +1 317 639 0515
Fax +1 317 639 0504
cushmanwakefield.com

±28 ACRES

Carey Road

WESTFIELD, IN 46074

SITE PLAN



MATT KITE, J.D.
Associate
+1 317 616 3981
matt.kite@cushwake.com

BO LEFFEL
Senior Director
+1 317 639 0441
bo.leffel@cushwake.com

One American Square, Suite 1800
Indianapolis, IN 46282
Main +1 317 639 0515
Fax +1 317 639 0504
cushmanwakefield.com