

# 315 WEST 33RD

Ground Floor  
2,838 SF

Lower Level  
45,875 SF

**NEWMARK**



### Sublease Expiration

February 27, 2033

### Space Breakdown

**Ground Floor**

2,838 SF

**Lower Level**

45,875 SF

### Comments

- + Ceilings: Ground Floor 12', Lower Level 14'
- + Directly across from Moynihan Station
- + Ideal for schools, event space, public assembly, fitness centers, any medical use

**Alexander Kessler**

212-372-0766

[alexander.kessler@nmrk.com](mailto:alexander.kessler@nmrk.com)

**Howard Kessler**

212-372-2110

[howard.kessler@nmrk.com](mailto:howard.kessler@nmrk.com)

**Jared Horowitz**

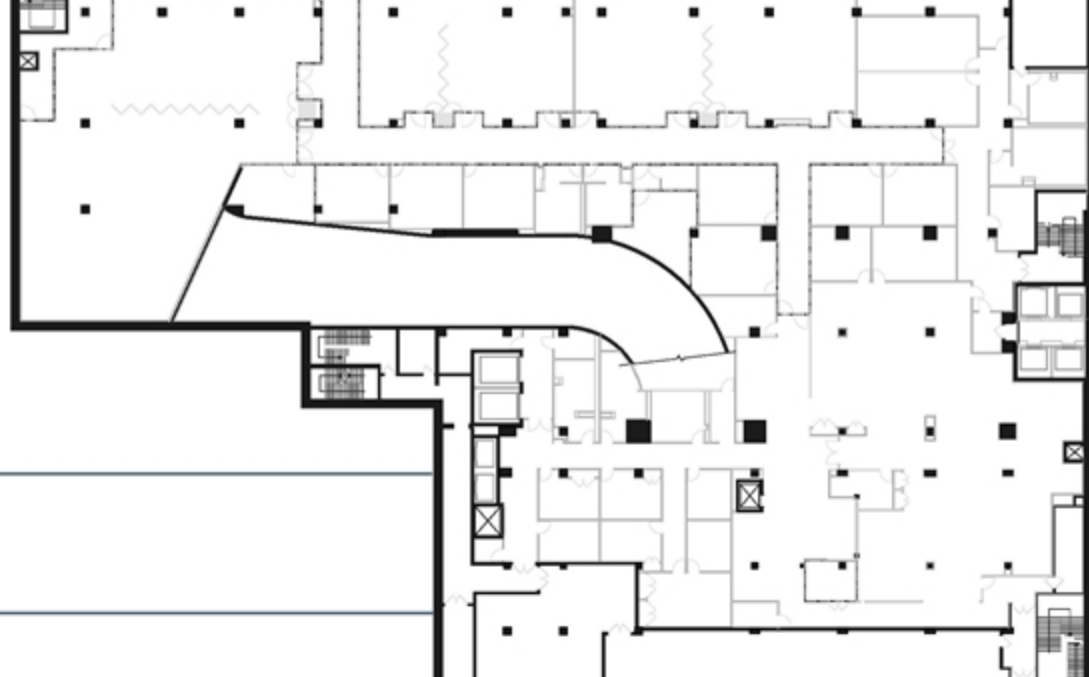
212-372-2022

[jared.horowitz@nmrk.com](mailto:jared.horowitz@nmrk.com)

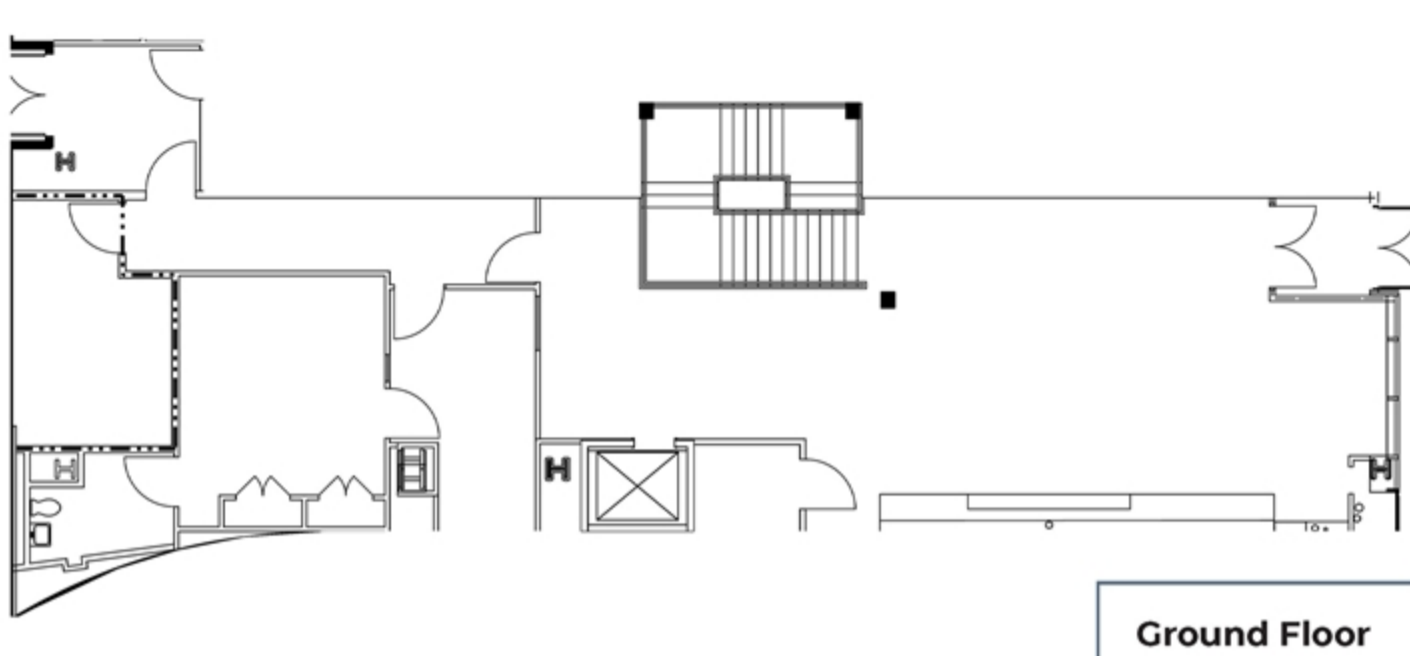


## Floor Plans

EXISTING CONDITIONS



**Lower Level**  
45,875 SF



**Ground Floor**  
2,838 SF



# 315 WEST 33RD

**Alexander Kessler**

212-372-0766

[alexander.kessler@nmrk.com](mailto:alexander.kessler@nmrk.com)

**Howard Kessler**

212-372-2110

[howard.kessler@nmrk.com](mailto:howard.kessler@nmrk.com)

**Jared Horowitz**

212-372-2022

[jared.horowitz@nmrk.com](mailto:jared.horowitz@nmrk.com)

**NEWMARK**

[DOWNLOAD BROCHURE](#)

125 Park Avenue, New York, NY 10017 | 212-372-2000

The information contained herein has been obtained from sources deemed reliable but has not been verified and no guarantee, warranty or representation, either express or implied, is made with respect to such information. Terms of sale or lease and availability are subject to change or withdrawal without notice.

©2022 Newmark. All Rights Reserved.