



FOR LEASE

Crosspoint Corner Building 3

Indianapolis, IN 46256



**9820 Westpoint Drive
Indianapolis, IN 46256**

Property Highlights

- Single-story professional building
- Brand new construction in one of Indy's hottest development areas
- Excellent for professional, medical, sales and service tenants
- Prominently located in the I-69/Fishers/Geist corridor
- Crosspoint Corner places its tenants just minutes from everything on Indy's northeast side
- \$18.95/sf plus janitorial & utilities



Darrin L. Boyd, SIOR, CCIM
+1 317 590 8490
darrin.boyd@cushwake.com

David A. Moore, SIOR, CCIM
+1 317 639 0490
david.moore@cushwake.com

One American Square, Suite 1800
Indianapolis, IN 46282
+1 317 639 0515

IndyOfficeSpace.com
cushmanwakefield.com

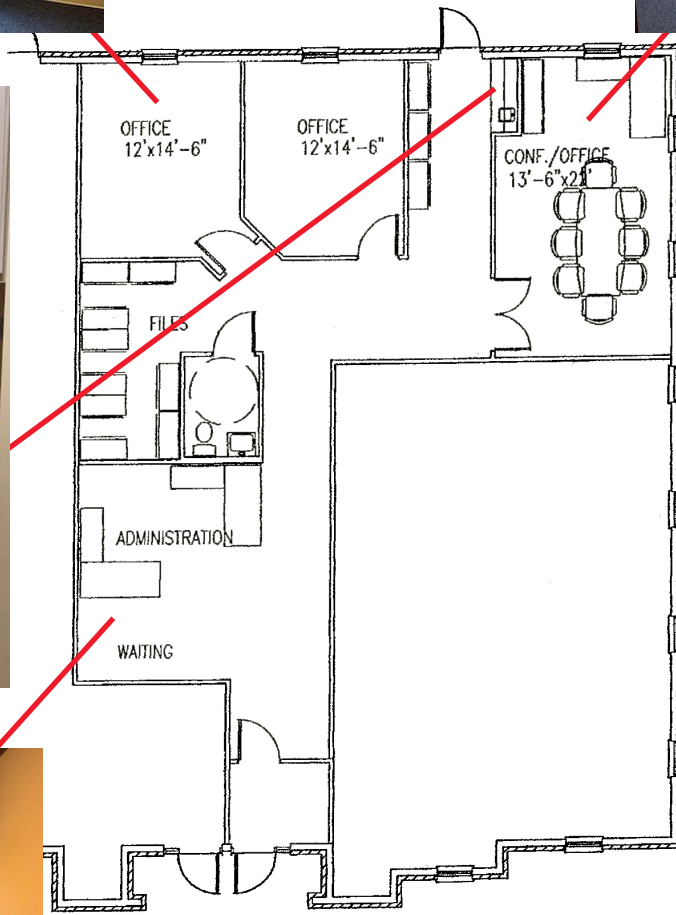
©2019 Cushman & Wakefield. All rights reserved. The information contained in this communication is strictly confidential. This information has been obtained from sources believed to be reliable but has not been verified. NO WARRANTY OR REPRESENTATION, EXPRESS OR IMPLIED, IS MADE AS TO THE CONDITION OF THE PROPERTY (OR PROPERTIES) REFERENCED HEREIN OR AS TO THE ACCURACY OR COMPLETENESS OF THE INFORMATION CONTAINED HEREIN, AND SAME IS SUBMITTED SUBJECT TO ERRORS, OMISSIONS, CHANGE OF PRICE, RENTAL OR OTHER CONDITIONS, WITHDRAWAL WITHOUT NOTICE, AND TO ANY SPECIAL LISTING CONDITIONS IMPOSED BY THE PROPERTY OWNER(S). ANY PROJECTIONS, OPINIONS OR ESTIMATES ARE SUBJECT TO UNCERTAINTY AND DO NOT SIGNIFY CURRENT OR FUTURE PROPERTY PERFORMANCE.



FOR LEASE

Crosspoint Corner Building 3

Indianapolis, IN 46256



**SUITE 500
AVAILABLE
1,648 SF**

