

1375 EXPOSITION BLVD

Sacramento, CA

CLASS A OFFICE SPACE
FOR LEASE
±1,919 to ±9,275 RSF



PROPERTY INFORMATION

- Three-story Class A office building
- Beautiful two-story open lobby with contemporary design and high quality finishes
- Floor to ceiling glass along the window line
- **Suites Available for Immediate Occupancy**
- Prominent Monument signage available
- New common area, conference room & fitness room
- Located in the Point West business district just minutes from Arden Fair Mall, numerous hotels, restaurants and retail
- Easy access to Highway 80 and Downtown

© Cushman & Wakefield. This information has been obtained from sources believed reliable. We have not verified it and make no guarantee, warranty or representation about it. Any projections, opinions, assumptions or estimates used are for example only and do not represent the current or future performance of the property. You and your advisors should conduct a careful, independent investigation of the property to determine to your satisfaction the suitability of the property for your needs.

A development of



JACKSON

Leasing opportunity presented by:



1375 EXPOSITION BLVD
Sacramento, CA

A development of



JACKSON
PROPERTIES, INC.



HBA
HOWBOUTARDEN

- CENTURY THEATRES
- NORDSTROM RACK
- HOMEGOODS
- THE CONTAINER STORE
- STARBUCKS
- CARTERS
- PINKBERRY
- TOMATINA
- MOD PIZZA
- JAMBA JUICE

CAL EXPO
80+ EVENTS PER YEAR
4M+ ANNUAL VISITORS



POINT WEST
PLAZA

- KOHL'S
- OLD NAVY
- HOBBY LOBBY
- PIER 1 IMPORTS
- PETCO

ARDEN
MALL

- MACY'S
- JCPENNEY
- APPLE
- COACH
- MICHAEL KORS
- ARMANI EXCHANGE
- SEARS
- NORDSTROM
- LULUEMON
- SEASON 52
- MAGGIANO'S
- MAC

MARKET
SQUARE

- UNITED ARTIST THEATRE
- BARNES & NOBLE
- CALIFORNIA PIZZA KITCHEN
- ULTA
- PLUTO'S
- URBAN OUTFITTERS



KEVIN PARTINGTON
Executive Director
916.288.4807
Lic. No. 01199010
kevin.partington@cushwake.com

KRIS KALMBACH
Senior Director
916.288.4421
Lic. No. 01436668
kris.kalmbach@cushwake.com



400 Capitol Mall, Suite 1800
Sacramento, CA 95814
Lic. No. 00616335
www.cushmanwakefield.com

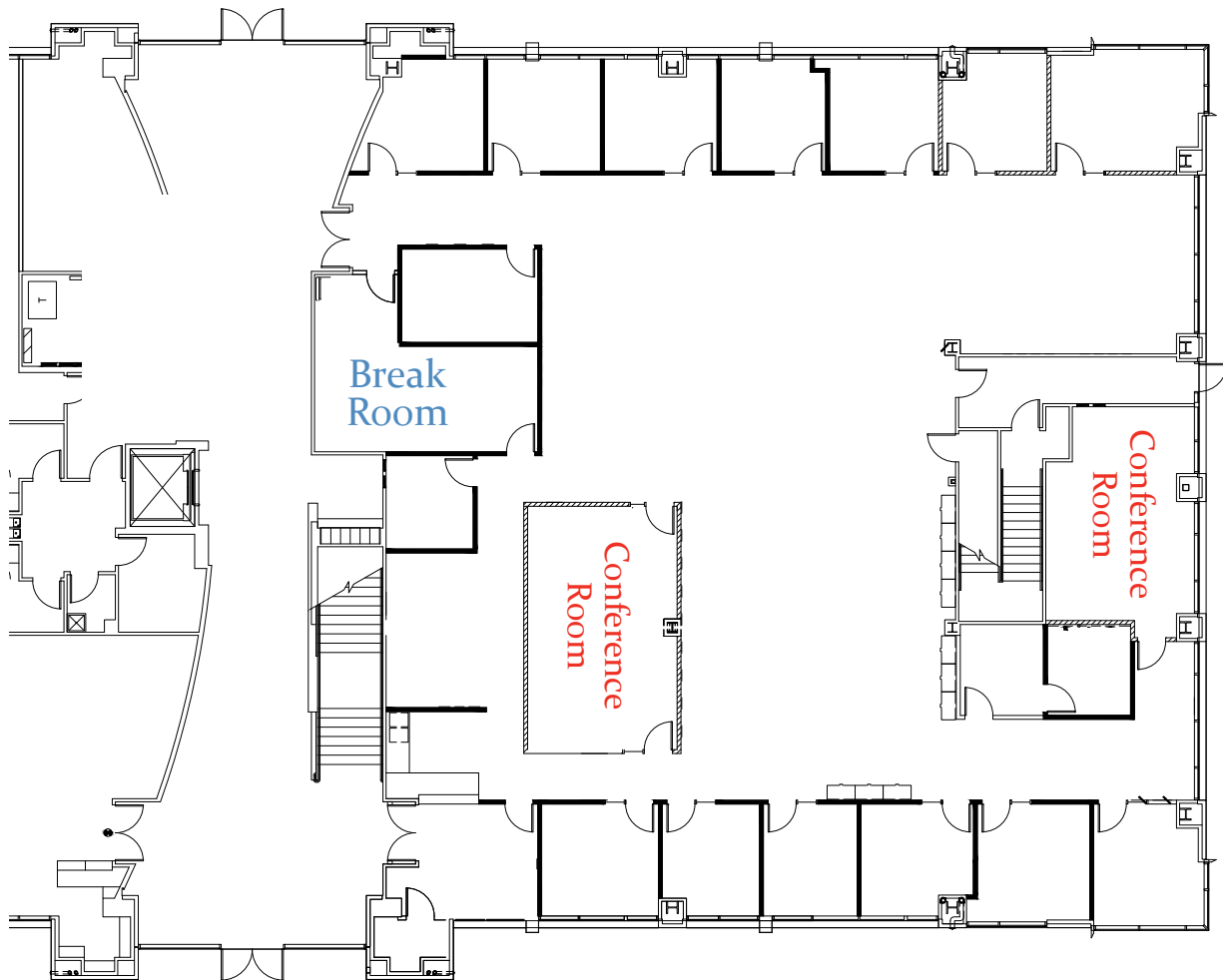
© Cushman & Wakefield. This information has been obtained from sources believed reliable. We have not verified it and make no guarantee, warranty or representation about it. Any projections, opinions, assumptions or estimates used are for example only and do not represent the current or future performance of the property. You and your advisors should conduct a careful, independent investigation of the property to determine to your satisfaction the suitability of the property for your needs.



Suite 102

±9,275 RSF TOTAL

DIVISIBLE



NOT TO SCALE

KRIS KALMBACH
Senior Director
916.288.4421
Lic. No. 01436668

KEVIN PARTINGTON
Executive Director
916.288.4807
Lic. No. 01199010

kris.kalmbach@cushwake.com kevin.partington@cushwake.com



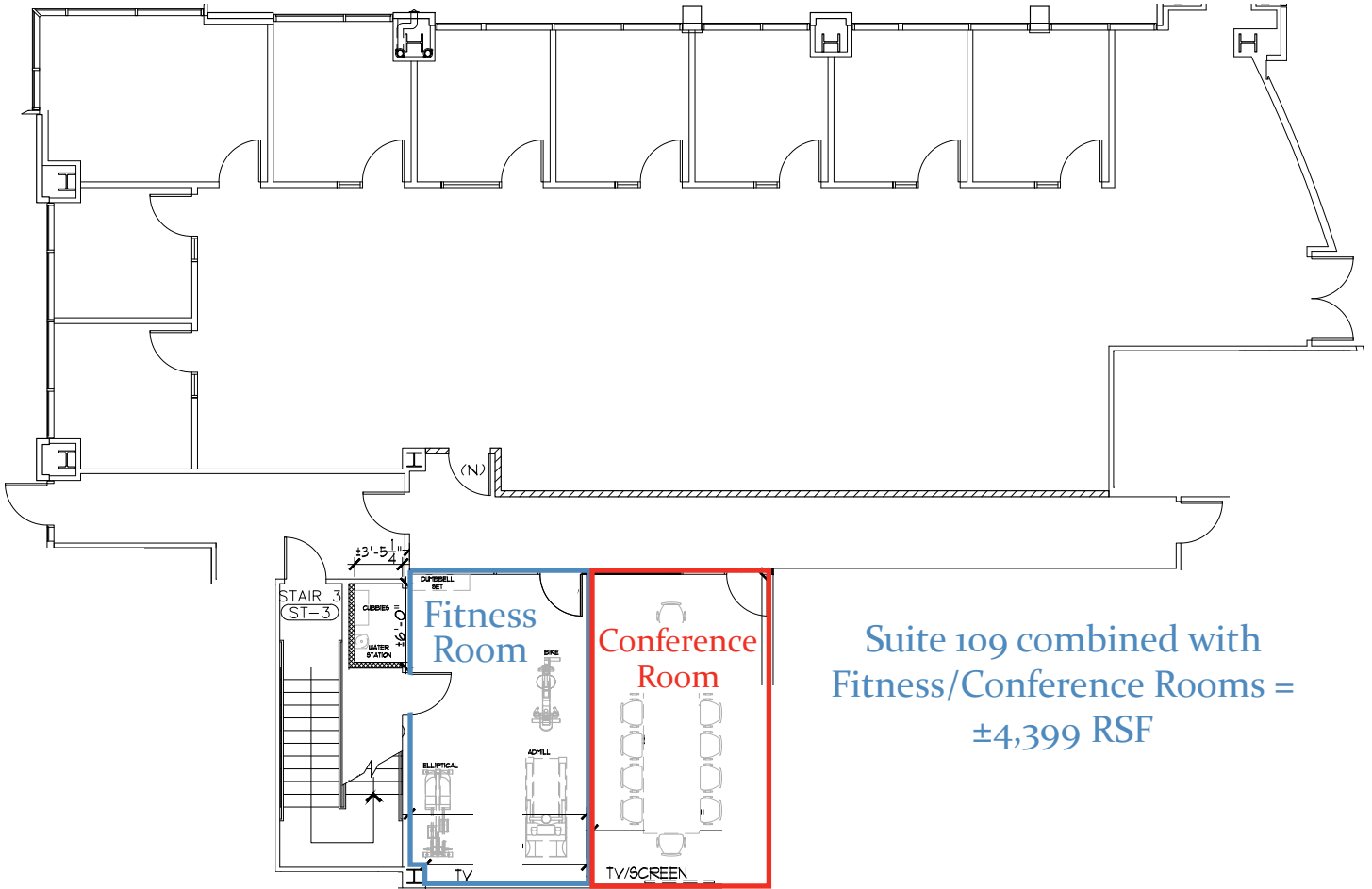
400 Capitol Mall, Suite 1800
Sacramento, CA 95814
Lic. No. 00616335
www.cushmanwakefield.com



Suite 109

±3,348 RSF TOTAL

DIVISIBLE



Suite 109 combined with
Fitness/Conference Rooms =
±4,399 RSF

NOT TO SCALE

KRIS KALMBACH
Senior Director
916.288.4421
Lic. No. 01436668

KEVIN PARTINGTON
Executive Director
916.288.4807
Lic. No. 01199010

kris.kalmbach@cushwake.com kevin.partington@cushwake.com



400 Capitol Mall, Suite 1800
Sacramento, CA 95814
Lic. No. 00616335
www.cushmanwakefield.com

1375 EXPOSITION BLVD
Sacramento, CA

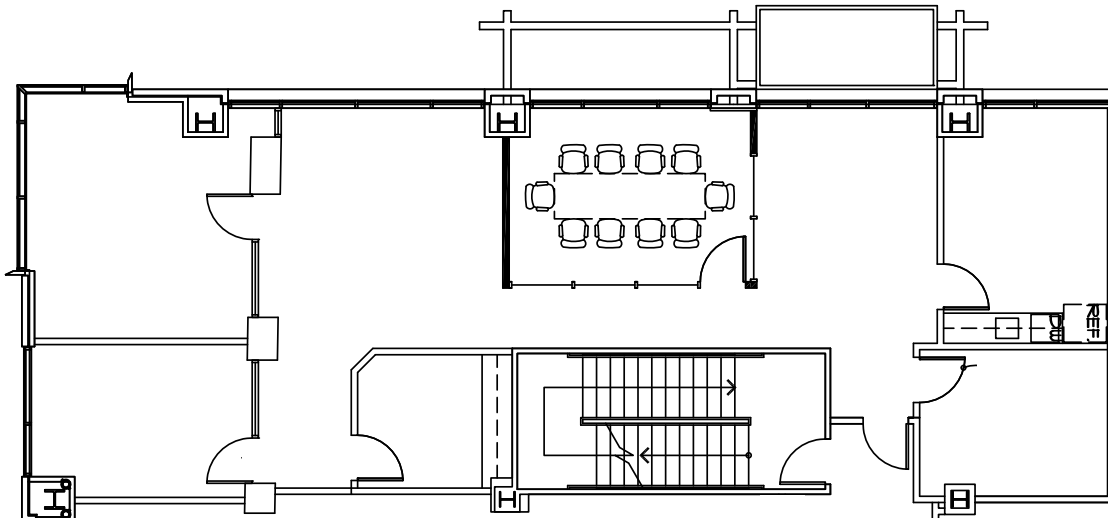
A development of



JACKSON
PROPERTIES, INC.

Suite 202

±1,919 RSF TOTAL



NOT TO SCALE

KRIS KALMBACH

Senior Director

916.288.4421

Lic. No. 01436668

kris.kalmbach@cushwake.com

KEVIN PARTINGTON

Executive Director

916.288.4807

Lic. No. 01199010

kevin.partington@cushwake.com



400 Capitol Mall, Suite 1800

Sacramento, CA 95814

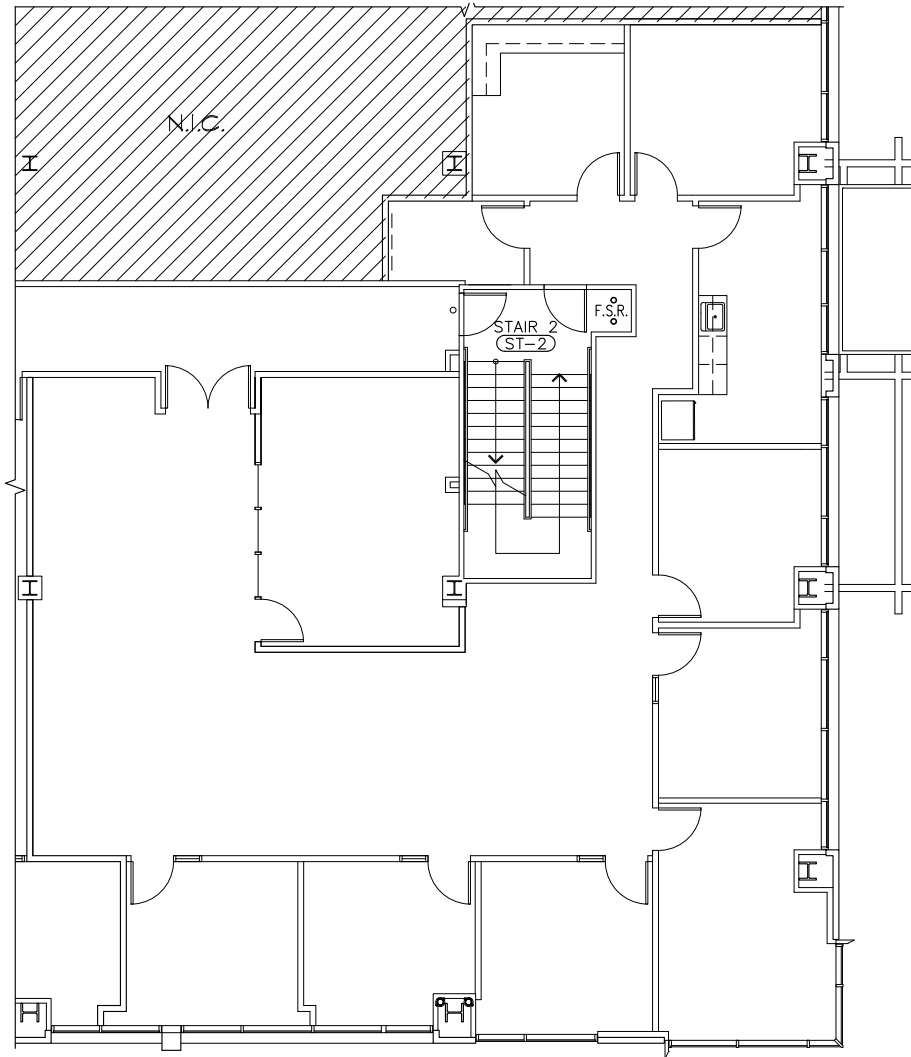
Lic. No. 00616335

www.cushmanwakefield.com



Suite 240

±3,457 RSF TOTAL | Available Aug-2020



NOT TO SCALE

KRIS KALMBACH
Senior Director
916.288.4421
Lic. No. 01436668

kris.kalmbach@cushwake.com

KEVIN PARTINGTON
Executive Director
916.288.4807
Lic. No. 01199010

kevin.partington@cushwake.com



400 Capitol Mall, Suite 1800
Sacramento, CA 95814
Lic. No. 00616335
www.cushmanwakefield.com