

FOR LEASE

550 Waverley Street, Palo Alto, CA



PREMIER
PROPERTIES
COMMERCIAL REAL ESTATE



Restaurant, Coffee Shop, Retail, Personal Services
Excellent Downtown Palo Alto Location
±2,725 Sq. Ft. - Available on 90 Days Notice

BRAD EHIKIAN
Partner

Phone: 650.618.3001
brad.ehikian@prprop.com
dre license #01736391

JON GOLDMAN
Partner

Phone: 650.618.3003
jon.goldman@prprop.com
dre license #01295503

JESSE EBNER
Associate

Phone: 650.618.3017
jesse.ebner@prprop.com
dre license #02055989

FOR PROPERTY DETAILS AND MORE LISTINGS

PremierPaloAlto.com

FOR LEASE

550 Waverley Street, Palo Alto, CA



PREMIER
PROPERTIES
COMMERCIAL REAL ESTATE

PROPERTY DESCRIPTION

- Excellent Downtown Palo Alto Location
- Ideal for Restaurant, Coffee Shop, Retail or Personal Services
- Current Use: Restaurant / Coffee Shop / Bakery
- Kitchen Infrastructure Including Walk-In Refrigerator and Hood
- Large Storefront Windows
- Outdoor Seating Area
- Prominent Signage Opportunities
- Walking Distance to Downtown Amenities and Caltrain

BRAD EHIKIAN
Partner

Phone: 650.618.3001
brad.ehikian@prprop.com
dre license #01736391

JON GOLDMAN
Partner

Phone: 650.618.3003
jon.goldman@prprop.com
dre license #01295503

JESSE EBNER
Associate

Phone: 650.618.3017
jesse.ebner@prprop.com
dre license #02055989

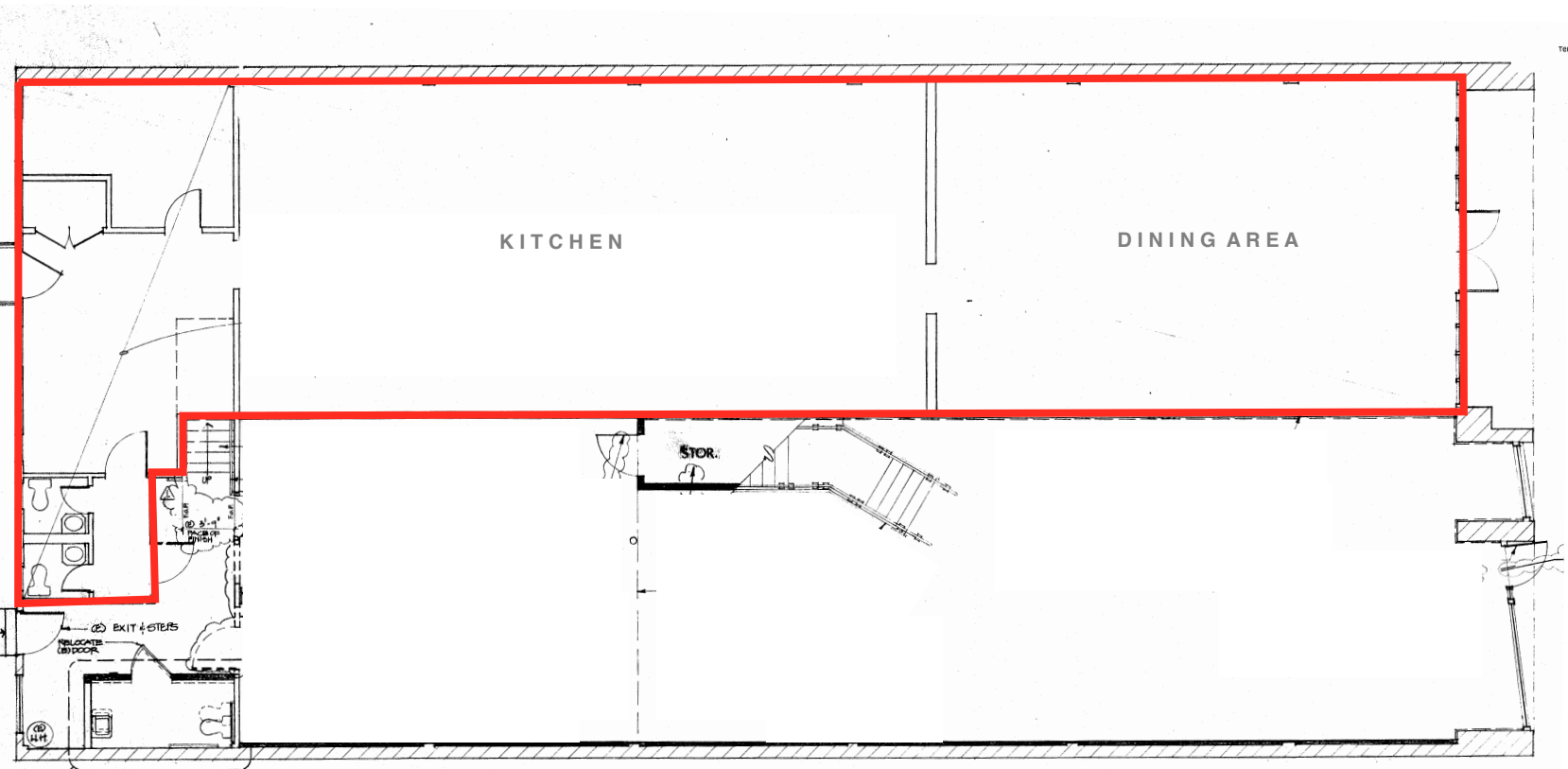
FOR LEASE

550 Waverley Street, Palo Alto, CA



PREMIER
PROPERTIES
COMMERCIAL REAL ESTATE

FLOOR PLAN



Floor Plan May Not Be Accurate / To Scale

BRAD EHIKIAN
Partner

Phone: 650.618.3001
brad.ehikian@prprop.com
dre license #01736391

JON GOLDMAN
Partner

Phone: 650.618.3003
jon.goldman@prprop.com
dre license #01295503

JESSE EBNER
Associate

Phone: 650.618.3017
jesse.ebner@prprop.com
dre license #02055989

FOR LEASE

550 Waverley Street, Palo Alto, CA



PREMIER
PROPERTIES
COMMERCIAL REAL ESTATE



Neither the property owner nor Premier Property Management make any representation or warranty with regard to the information contained within this advertising flyer and the information contained herein should not be relied upon for validity, accuracy, or completeness. Prior to submitting an offer, prospective purchasers or tenants should perform their own due diligence including consultation with their legal and tax counsel in order to arrive at an independent evaluation of the property.

BRAD EHIKIAN
Partner

Phone: 650.618.3001
brad.ehikian@prprop.com
dre license #01736391

JON GOLDMAN
Partner

Phone: 650.618.3003
jon.goldman@prprop.com
dre license #01295503

JESSE EBNER
Associate

Phone: 650.618.3017
jesse.ebner@prprop.com
dre license #02055989

FOR PROPERTY DETAILS AND MORE LISTINGS

PremierPaloAlto.com