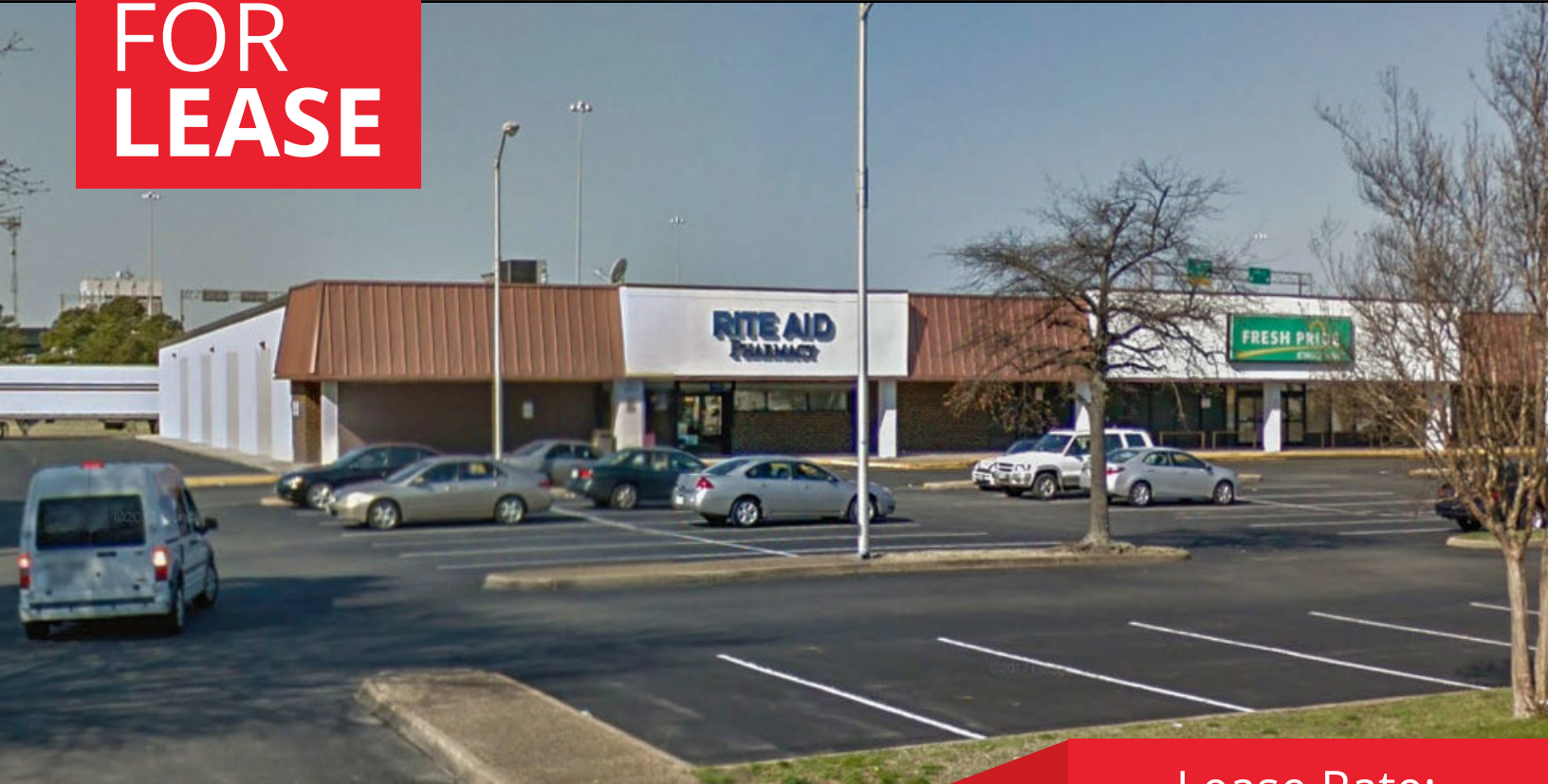


**FOR  
LEASE**



**2305 JEFFERSON AVENUE**

**Lease Rate:  
Negotiable**

**PROPERTY OVERVIEW**

Former in-line Rite Aid at Southeast Shopping Center. Located at the intersection of Jefferson Avenue and 25th Street in Newport News.

**DEMOGRAPHICS**

**1 MILE      5 MILES      10 MILES**

**Households:**                      3,387                      36,868                      142,476

**Population:**                      8,359                      89,370                      378,967

**Avg HH Income:**                      \$33,109                      \$48,947                      \$63,625

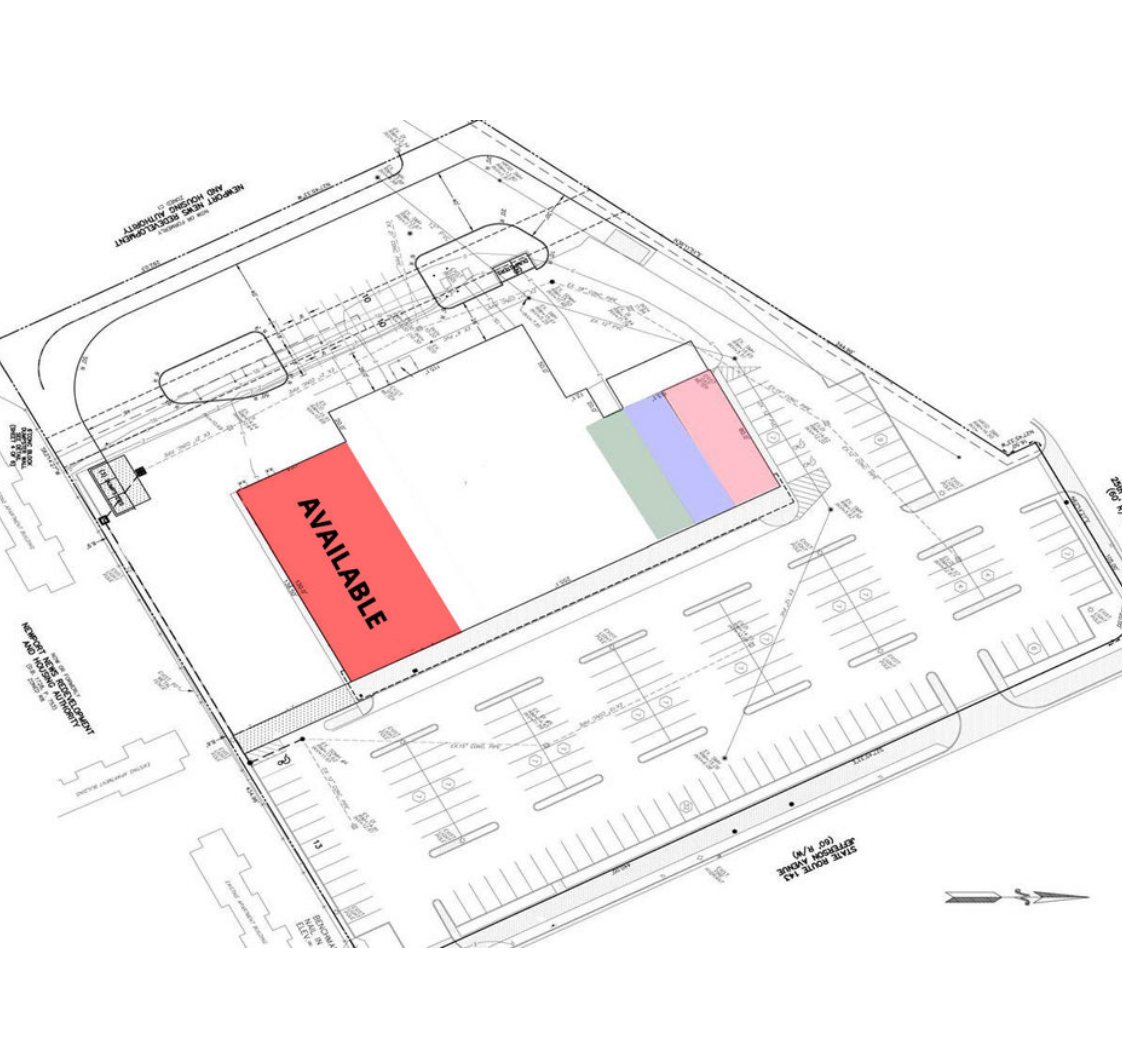
**PROPERTY HIGHLIGHTS**

- 8,450 SF Available
- 11,000 VPD on Jefferson Ave
- Located immediately off Interstate-664 with 69,000 VPD

**FOR FURTHER INFORMATION, PLEASE CONTACT:**  
**LEVI THOMSON** • lthomson@divaris.com • 757.333.4382



**FOR  
LEASE**



FOR FURTHER INFORMATION, PLEASE CONTACT:  
**LEVI THOMSON** • lthomson@divaris.com • 757.333.4382

