



FOR LEASE

45th Street Office Park

4424 South 700 East / 4444 South 700 East
645 East 4500 South / 655 East 4500 South
Salt Lake City, UT



FOR LEASE

45th Street Office Park

4424 South 700 East / 4444 South 700 East
645 East 4500 South / 655 East 4500 South
Salt Lake City, UT



Centrally located office complex with substantial property renovations completed in 2016

Property Highlights

- 645-2,267 SF Available!
- Lobby and outdoor patio areas recently renovated
- On-site shower and locker room
- Professional management
- Easy I-15 access / 700 East
- Utopia, Century Link, and Comcast Available
- \$16.00-\$16.50/RSF, Full Service

45TH STREET OFFICE PARK CONSISTS OF 4 BUILDINGS:

4424 South 700 East
- 2,267 total RSF available

4444 South 700 East
- 730 total RSF available

645 East 4500 South
- FULLY LEASED

655 East 4500 South
- 645 total RSF available

Alison Beddard
Senior Director
+1 801 303 5568
alison.beddard@cushwake.com

Annastasia Kaessner
Associate
+1 801 303 5547
anna.kaessner@cushwake.com

170 South Main Street Suite 1600
Salt Lake City, UT 84101
Main +1 801 322 2000
Fax +1 801 322 2040
cushmanwakefield.com

Alison Beddard
Senior Director
+1 801 303 5568
alison.beddard@cushwake.com

Annastasia Kaessner
Associate
+1 801 303 5547
anna.kaessner@cushwake.com



170 South Main Street Suite 1600
Salt Lake City, UT 84101
Main +1 801 322 2000
Fax +1 801 322 2040
cushmanwakefield.com



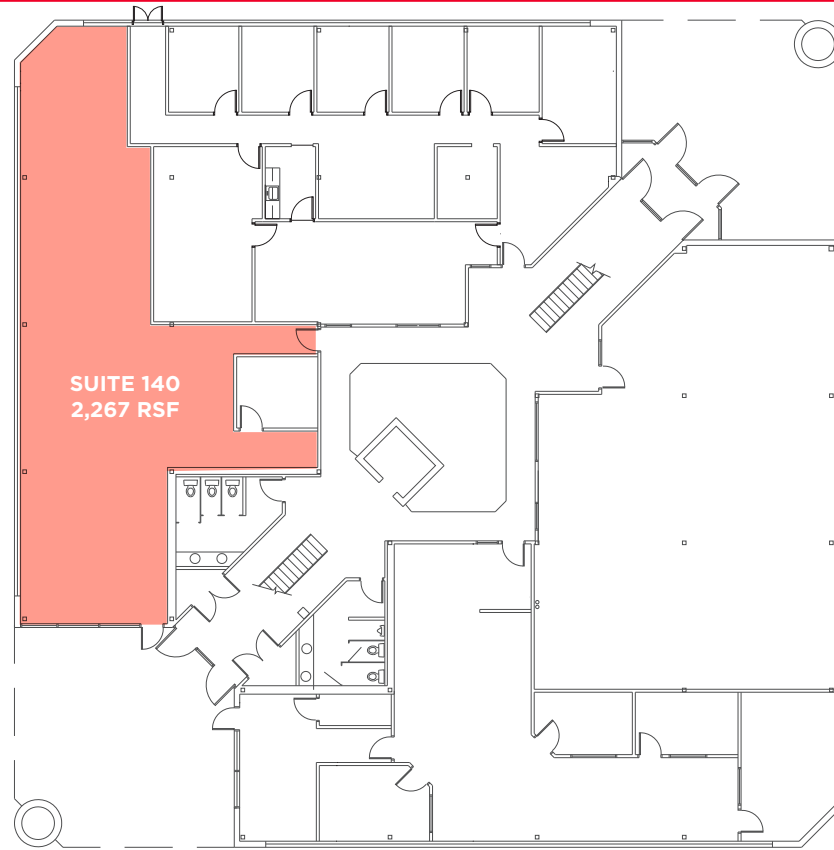
FOR LEASE

45th Street Office Park

4424 South 700 East / 4444 South 700 East
645 East 4500 South / 655 East 4500 South
Salt Lake City, UT

4424 South 700 East

Suite 140 | 2,267 RSF

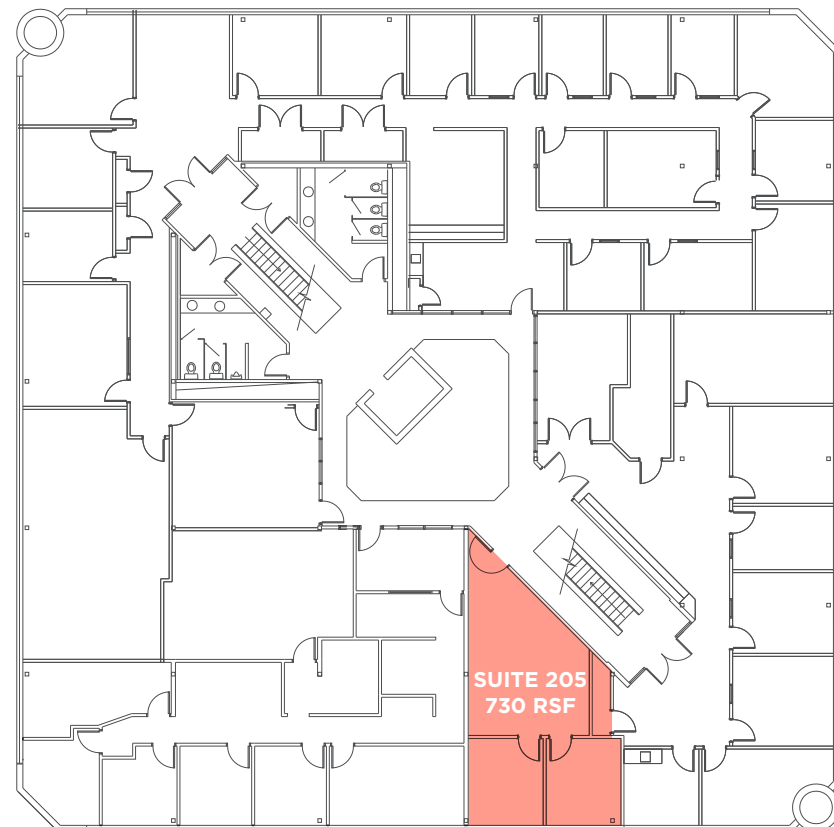


645 East 4500 South



4444 South 700 East

Suite 205 | 730 RSF



655 East 4500 South

Suite 101 | 645 RSF

