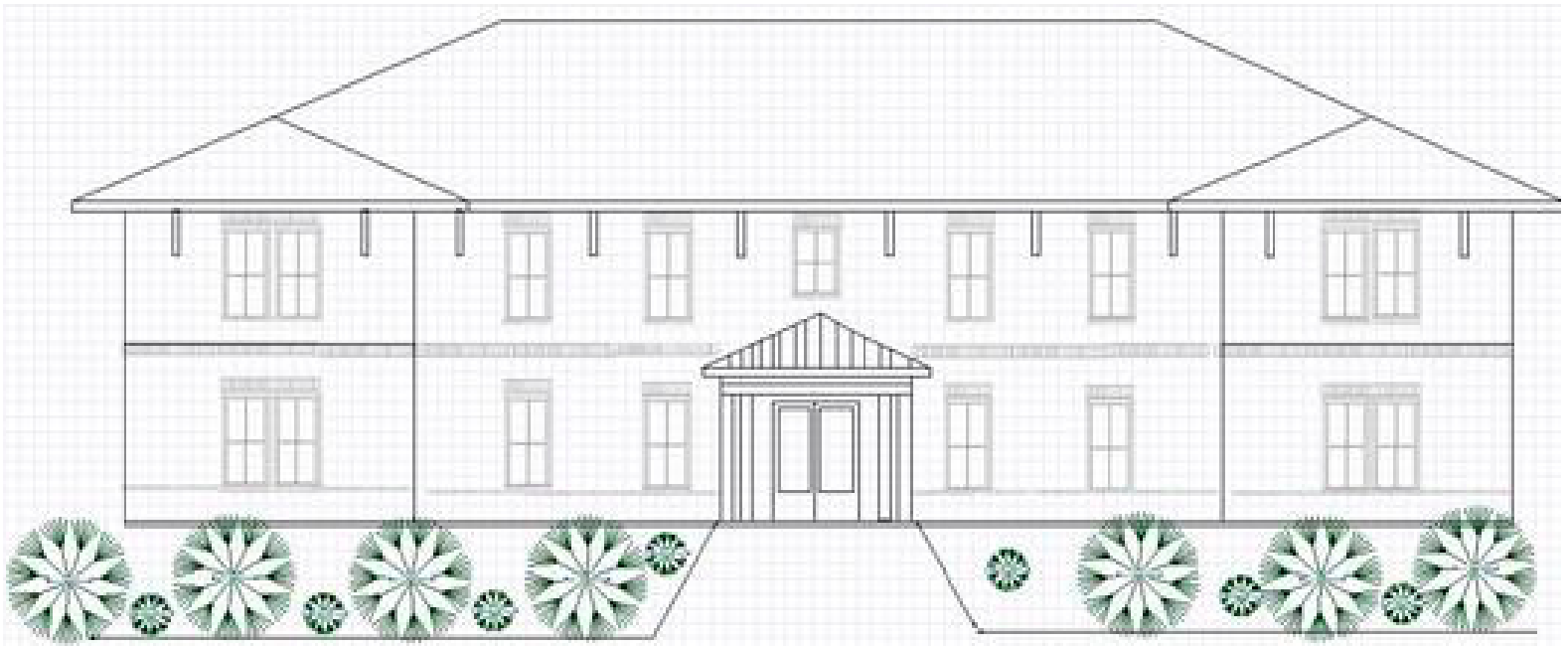


For Sale



12,000 s.f. office building in Eastpoint Business Center

New construction

- 12,000 s.f. two-story building with elevator
- Fee simple development with shared common area and parking
- Ample parking for medical use
- Interior can be designed for buyer preference
- Building could be built for multiple tenants

13104 Eastpoint Park Blvd.
Louisville, KY 40223

Patrick J. Richardson, CCIM

+1 502 394 2515

pat.richardson@am.jll.com

jll.com/louisville



Map



Patrick J. Richardson, CCIM

+1 502 394 2515

pat.richardson@am.jll.com

jll.com/louisville

Aerial



DISCLAIMER

©2018 Jones Lang LaSalle IP, Inc. All rights reserved. All information contained herein is from sources deemed reliable; however, no representation or warranty is made to the accuracy thereof.

