

BUILD TO SUIT

FOR SALE / LEASE 2068 W. 11th St, Upland



±92,275 SF

NEW PLANNED BUILDING 3RD QUARTER 2021

**Ashwill
Associates**

COMMERCIAL REAL ESTATE

For more information, contact:

Greg Ashwill
greg@ashwill.com
Lic. 00943299
(909) 612-9898

Hayden Ashwill
hayden@ashwill.com
Lic. 02102967
(909) 612-9868

Mitch Ashwill
mitch@ashwill.com
Lic. 00970525
(626) 363-7868



±4.87
Acres of land



±92,275
Building Square Feet



30 FT
Clear Height

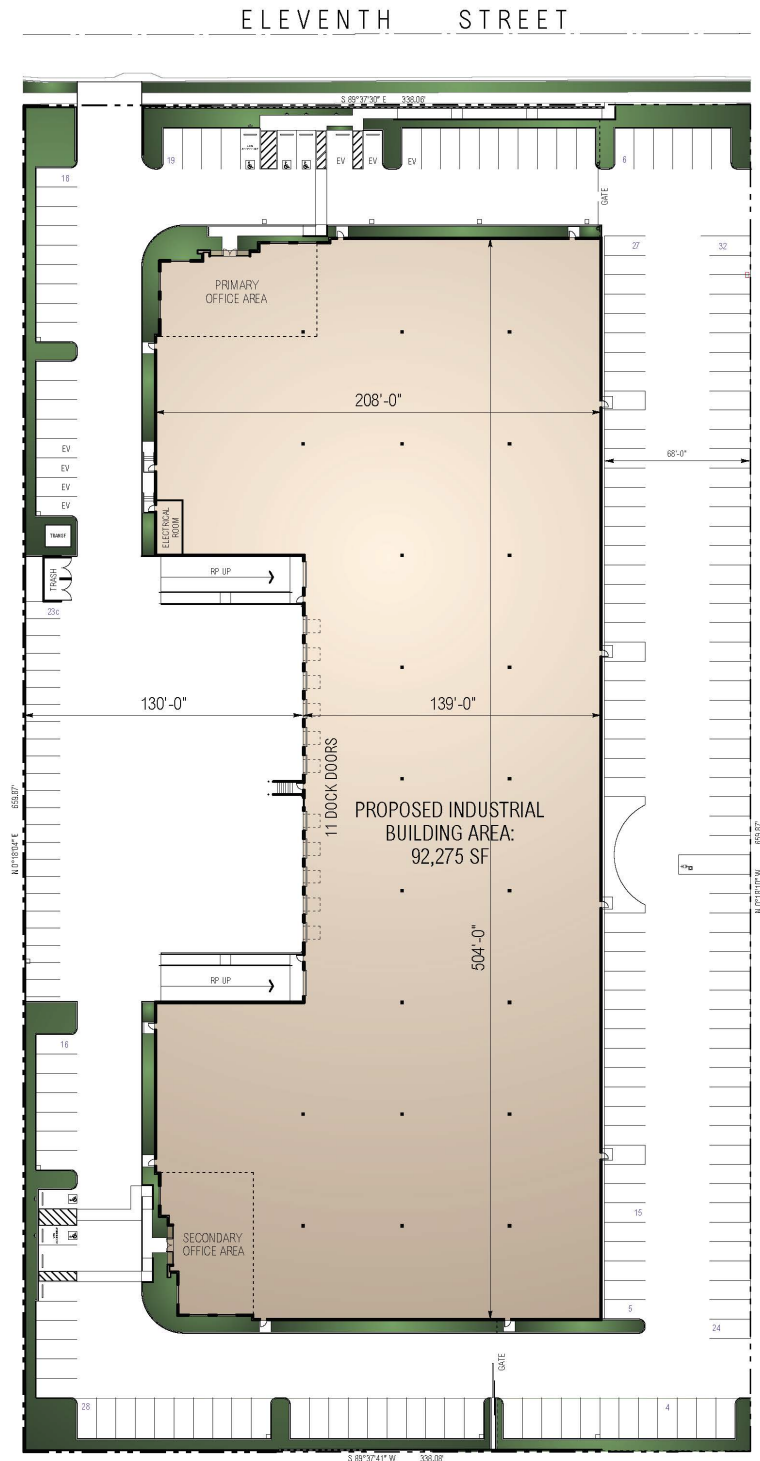


11
Dock Doors

For Sale/Lease ±92,275 SF
2068 W. 11th St, Upland, CA

Building Highlights:

- New State of the Art ±92,275 SF Building
- Eleven (11) Dock High Loading Doors
- One (1) Grade Level Loading Door – Ramp up
- ±5,500 SF of Office Space with ±2,750 SF of Mezzanine Office-Fully Finished
- 30' Clear Height
- ESFR Fire Sprinklers
- Secured Truck Court and Yard Area
- 800 Amps of 277/480 Volt Power (expandable)
- White Scrim Foil
- 2.5% Skylight Ratio
- No Association Fees



**Ashwill
Associates**

COMMERCIAL REAL ESTATE

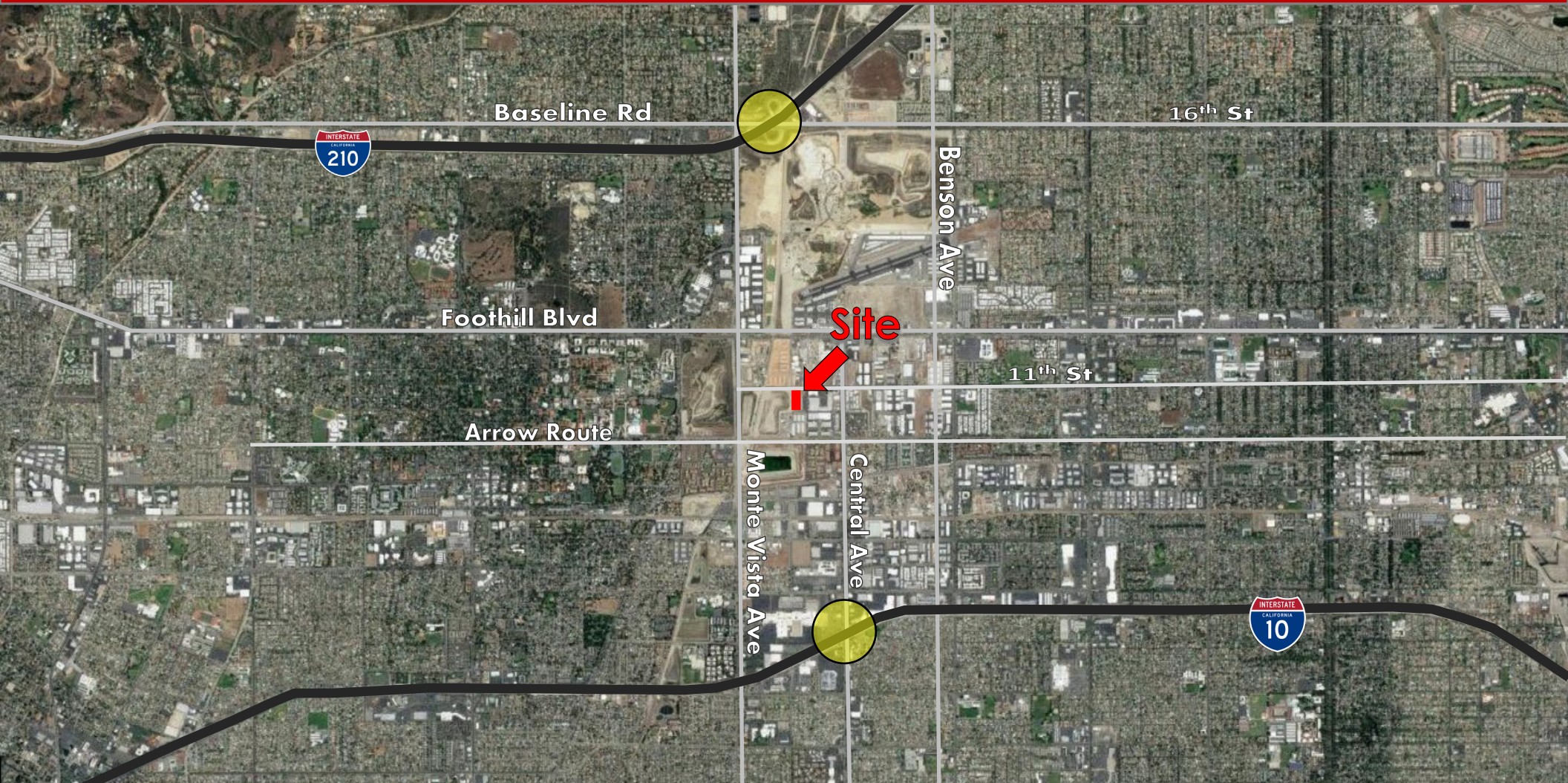
For more information, contact:

Greg Ashwill
greg@ashwill.com
Lic. 00943299
(909) 612-9898

Hayden Ashwill
hayden@ashwill.com
Lic. 02102967
(909) 612-9868

Mitch Ashwill
mitch@ashwill.com
Lic. 00970525
(626) 363-7868

For Sale/Lease | ±92,275 SF | 2068 W. 11th Street, Upland, CA



The information contained herein has been obtained from sources we deem reliable. While we have no reason to doubt its accuracy, we do not guarantee it. The prospective buyer or lessee should independently verify all information contained herein. All measurements are approximate.

For more information, contact:

**Ashwill
Associates**
COMMERCIAL REAL ESTATE

Greg Ashwill
greg@ashwill.com
Lic. 00943299
(909) 612-9898

Hayden Ashwill
hayden@ashwill.com
Lic. 02102967
(909) 612-9868

Mitch Ashwill
mitch@ashwill.com
Lic. 00970525
(626) 363-7868

