



FORESIGHT PLAZA

10025 NE 183rd Street, Bothell, WA 98011

FOR
LEASE



JOHN VIACAVAL

(425) 250-3279
john@fwp-inc.com

RYAN CORNISH

(425) 250-3285
ryan@fwp-inc.com

First Western Properties, Inc.
11621 97th Lane NE, Kirkland, WA 98034
P (425) 822-5522 F (425) 822-7440

© First Western Properties, Inc. **DISCLAIMER:** The above information has been secured from sources believed to be reliable, however, no representations are made to its accuracy. Prospective tenants or buyers should consult their professional advisors and conduct their own independent investigation. Properties are subject to change in price and/or availability without notice.

www.fwp-inc.com

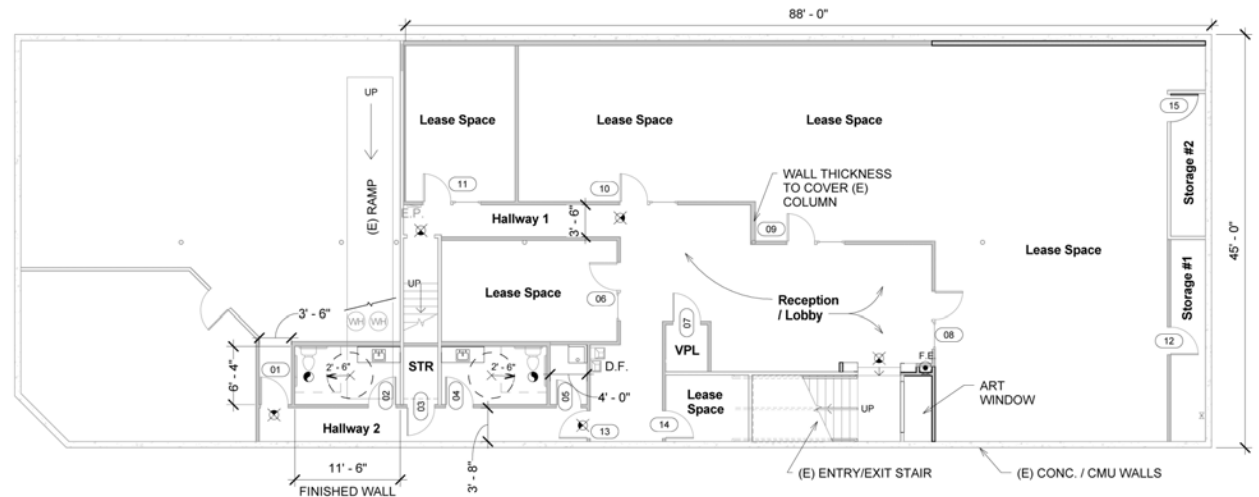
FORESIGHT PLAZA

10025 NE 183rd Street, Bothell, WA 98011

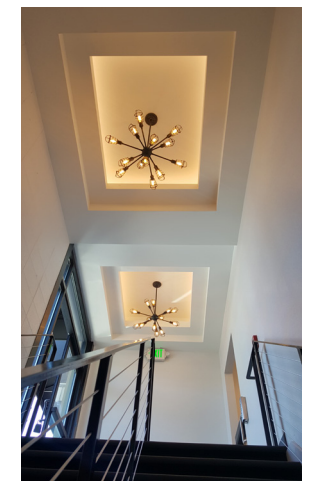
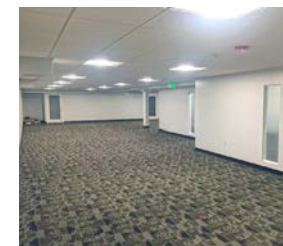
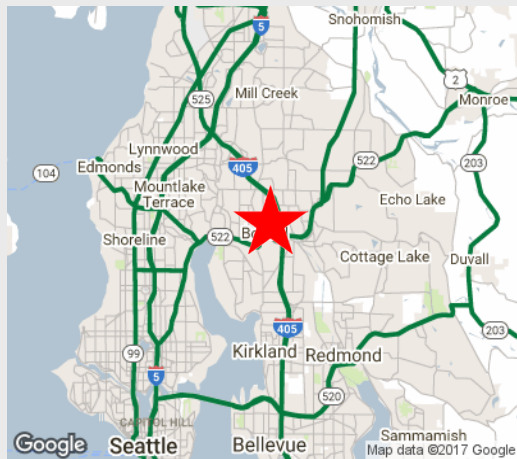
FOR
LEASE

PROPERTY INFORMATION:

- Class A Office Available: 4,000 SF
- Rental Rate: \$20 PSF, Modified Gross
- Newly Remodeled Downstairs Office Space Located in the Heart of Downtown Bothell, Walking Distance to McMenamin's, The Junction, City Hall, and Historic Main Street
- Located in the Same Building as Julio's Mexican Restaurant and the Newly Opened The Cottage Cafe
- Flexible Floor Plan Allows for Multiple Private Offices, Conference Rooms, as well as Oversized Executive Suite. 2 Restrooms within Space. Fully ADA, Elevator Served



1 Downstairs Office Plan
1/8" = 1'-0"



DEMOGRAPHICS	Mile 1	Mile 3	Mile 5
Population	12,923	103,553	255,158
Average HH Income	\$98,645	\$121,932	\$126,175
Daytime Population	4,863	43,490	88,688



First Western Properties, Inc.
11621 97th Lane NE, Kirkland, WA 98034
P (425) 822-5522 F (425) 822-7440

www.fwp-inc.com

FORESIGHT PLAZA

10025 NE 183rd Street, Bothell, WA 98011

FOR
LEASE



First Western Properties, Inc.
11621 97th Lane NE, Kirkland, WA 98034
P (425) 822-5522 F (425) 822-7440

www.fwp-inc.com