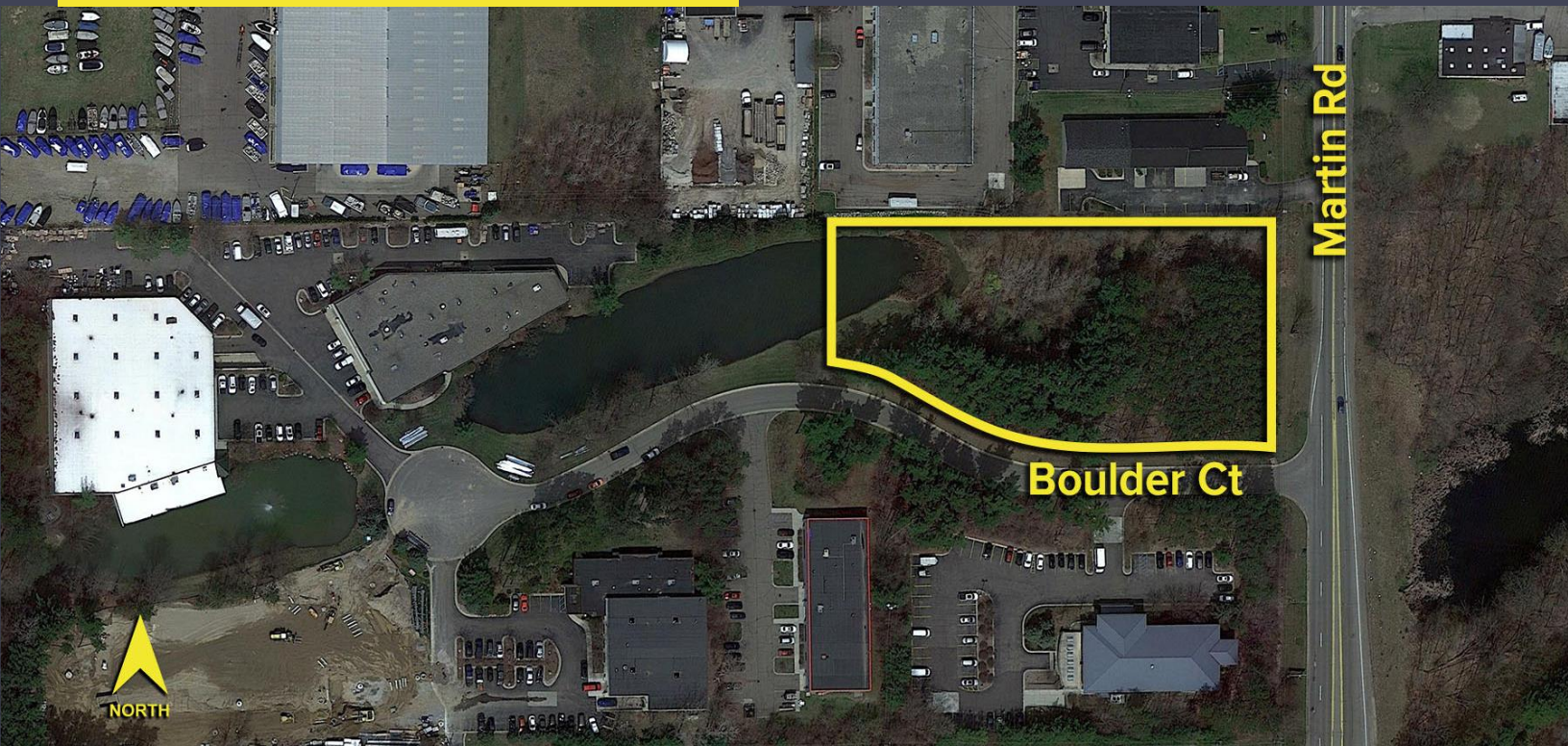


8450 BOULDER COURT  
COMMERCE TWP., MICHIGAN

VACANT LAND FOR SALE  
2.02 Acres Available



**SIGNATURE  
ASSOCIATES**  
KNOW SIGNATURE | KNOW RESULTS



## PROPERTY FEATURES

- 2.02 acres available
- Frontage on Martin Parkway (new extension of M-5) for sale or build-to-suit.
- Zoned: Technology/Light Manufacturing
- Sale price: \$349,000 (\$172,772.28/acre)



For more information, please contact:

**JEFF LEMANSKI**  
(248) 359 0641  
jefflamanski@signatureassociates.com

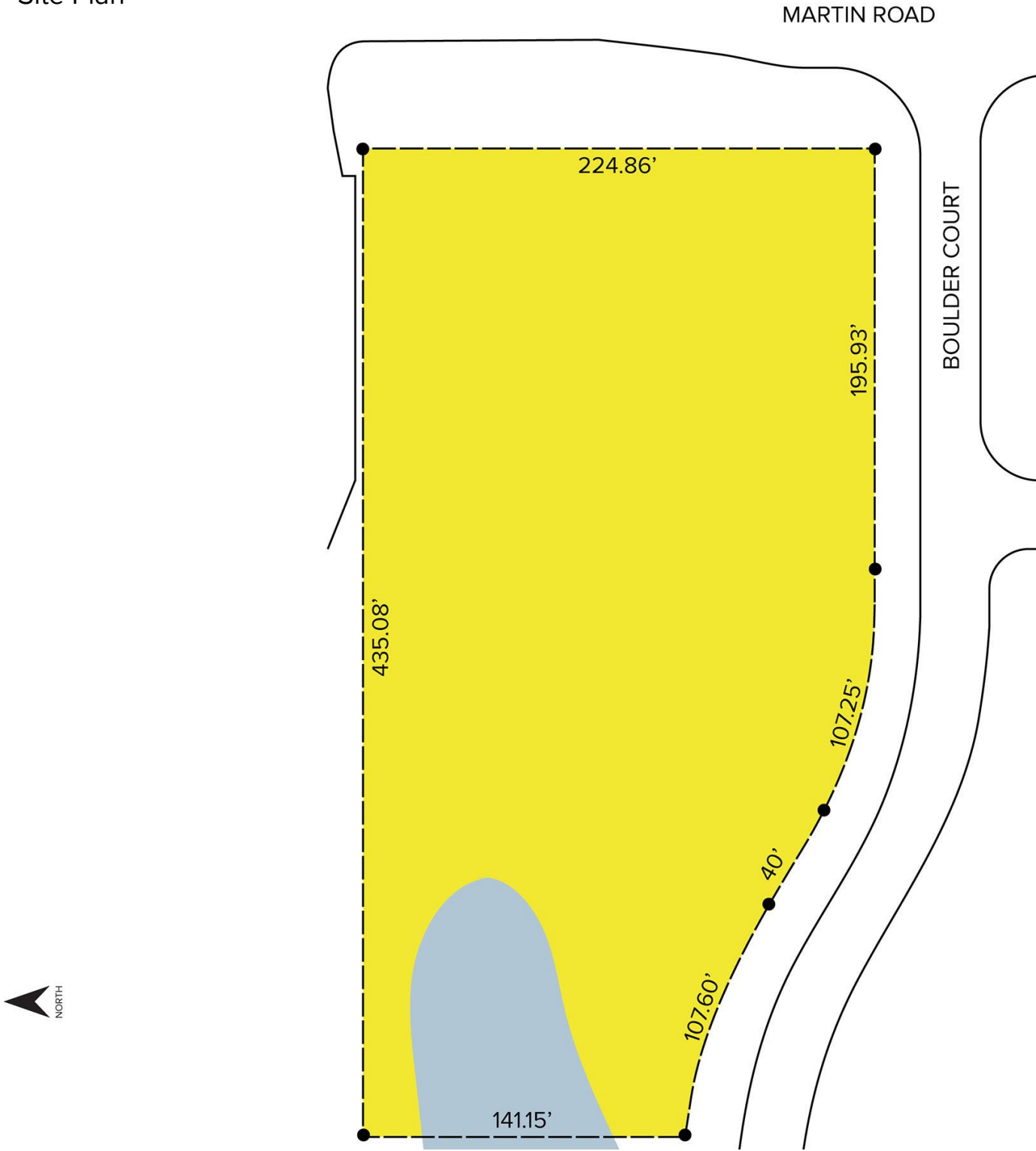
**SIGNATURE ASSOCIATES**  
One Towne Square, Suite 1200  
Southfield, MI 48076  
www.signatureassociates.com

Information is subject to verification and no liability for errors or omissions is assumed. Price is subject to change and listing withdrawal.

8450 Boulder Court – Commerce Twp., Michigan  
Land For Sale

2.02  
Acres  
AVAILABLE

Site Plan



For more information, please contact:  
**JEFF LEMANSKI**  
(248) 359 0641  
jefflamanski@signatureassociates.com

**SIGNATURE ASSOCIATES**  
One Towne Square, Suite 1200  
Southfield, MI 48076  
www.signatureassociates.com

Information is subject to verification and no liability for errors or omissions is assumed. Price is subject to change and listing withdrawal.