



**PREMIER
PROPERTIES**
COMMERCIAL
REAL ESTATE

FOR LEASE

305 SOUTH DRIVE

Mountain View, CA

Suite 4: 1,161 Sq. Ft. Medical Office



BRAD EHIKIAN

Partner
dre license #01736391
📞 | 650.618.3001
✉ | brad.ehikian@prprop.com

JON GOLDMAN

Partner
dre license #01295503
📞 | 650.618.3003
✉ | jon.goldman@prprop.com

JESSE EBNER

Vice President
dre license #02055989
📞 | 650.618.3017
✉ | jesse.ebner@prprop.com

PROPERTY DESCRIPTION

- ▶ Ideally Situated Across the Street from El Camino Hospital
- ▶ Medical Office Space with Multiple Treatment Rooms
- ▶ Hardwood Floors
- ▶ In-Suite Kitchenette & Restroom
- ▶ ±938 Sq. Ft. Ground Floor Space
- ▶ ±223 Sq. Ft. Finished Basement Space
- ▶ Parking: ±37 On-Site Parking Spaces
- ▶ Zoning: El Camino Medical Park Precise Plan
- ▶ Basement Can Be Used as Office, Break Room, or Storage Space

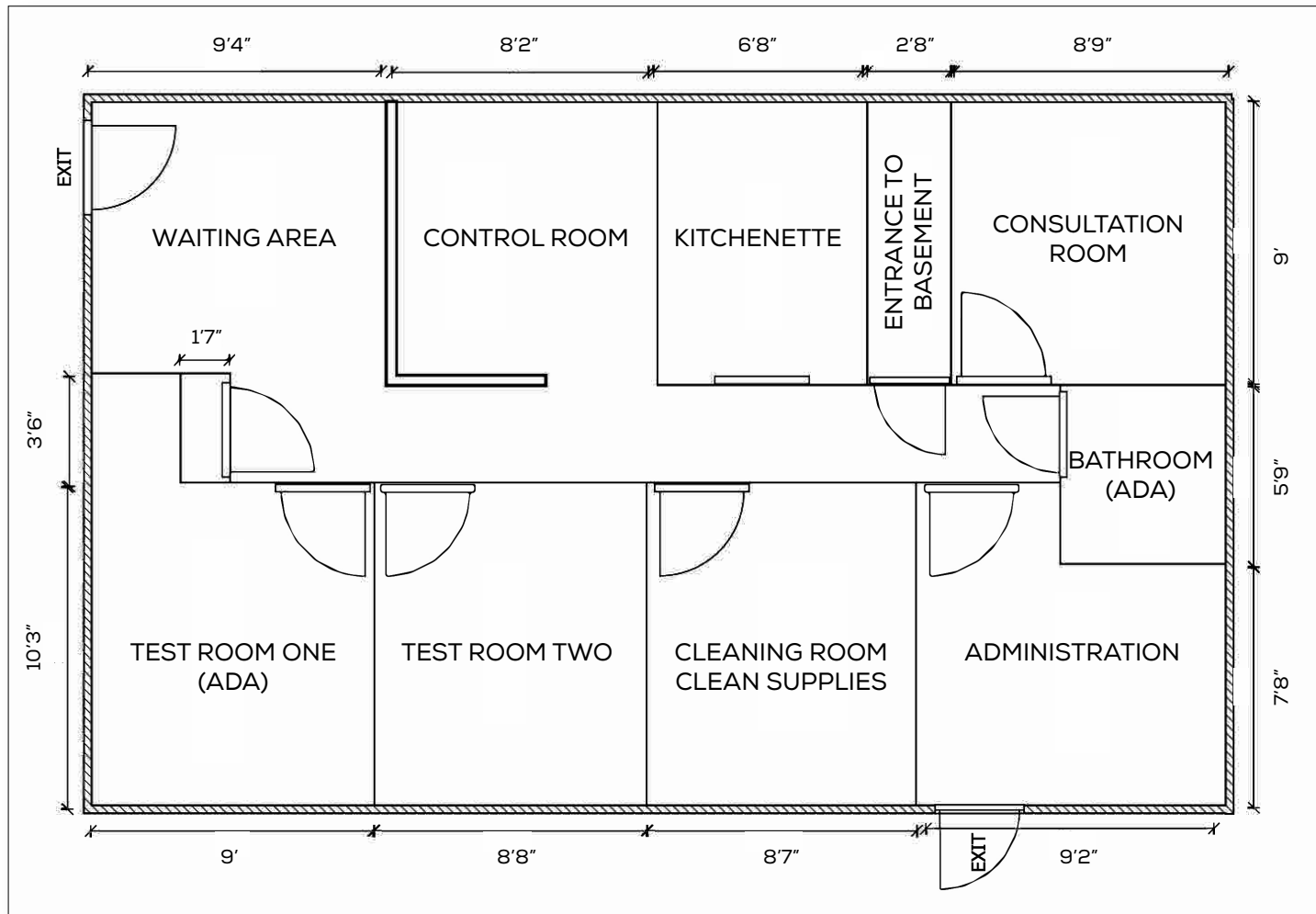


BRAD EHIKIAN
Partner
dre license #01736391
☎ | 650.618.3001
✉ | brad.ehikian@prprop.com

JON GOLDMAN
Partner
dre license #01295503
☎ | 650.618.3003
✉ | jon.goldman@prprop.com

JESSE EBNER
Vice President
dre license #02055989
☎ | 650.618.3017
✉ | jesse.ebner@prprop.com

FLOOR PLAN



MAY NOT BE ACCURATE / TO SCALE

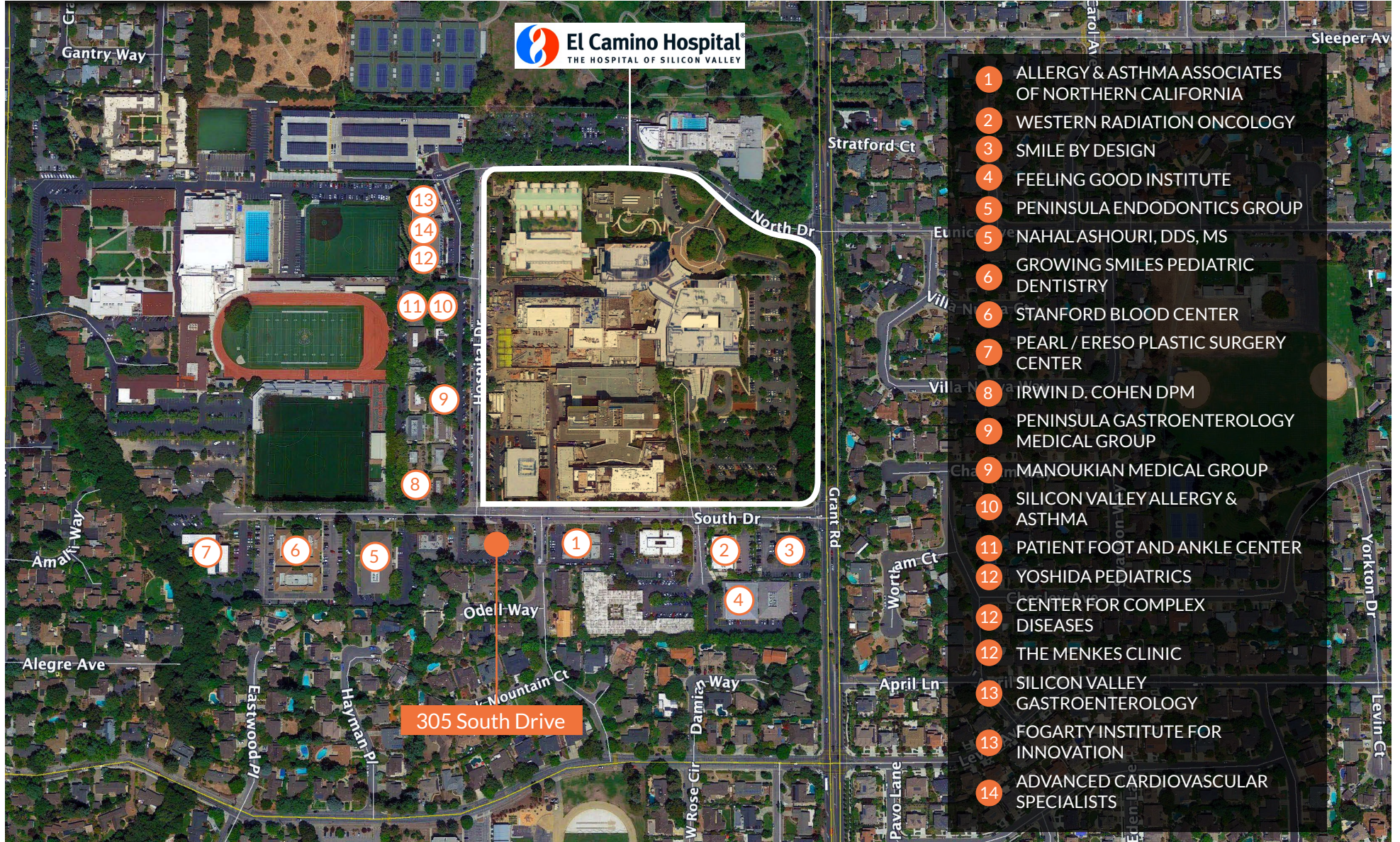


BRAD EHIKIAN
Partner
dre license #01736391
☎ | 650.618.3001
✉ | brad.ehikian@prprop.com

JON GOLDMAN
Partner
dre license #01295503
☎ | 650.618.3003
✉ | jon.goldman@prprop.com

JESSE EBNER
Vice President
dre license #02055989
☎ | 650.618.3017
✉ | jesse.ebner@prprop.com

MEDICAL TENANTS AERIAL

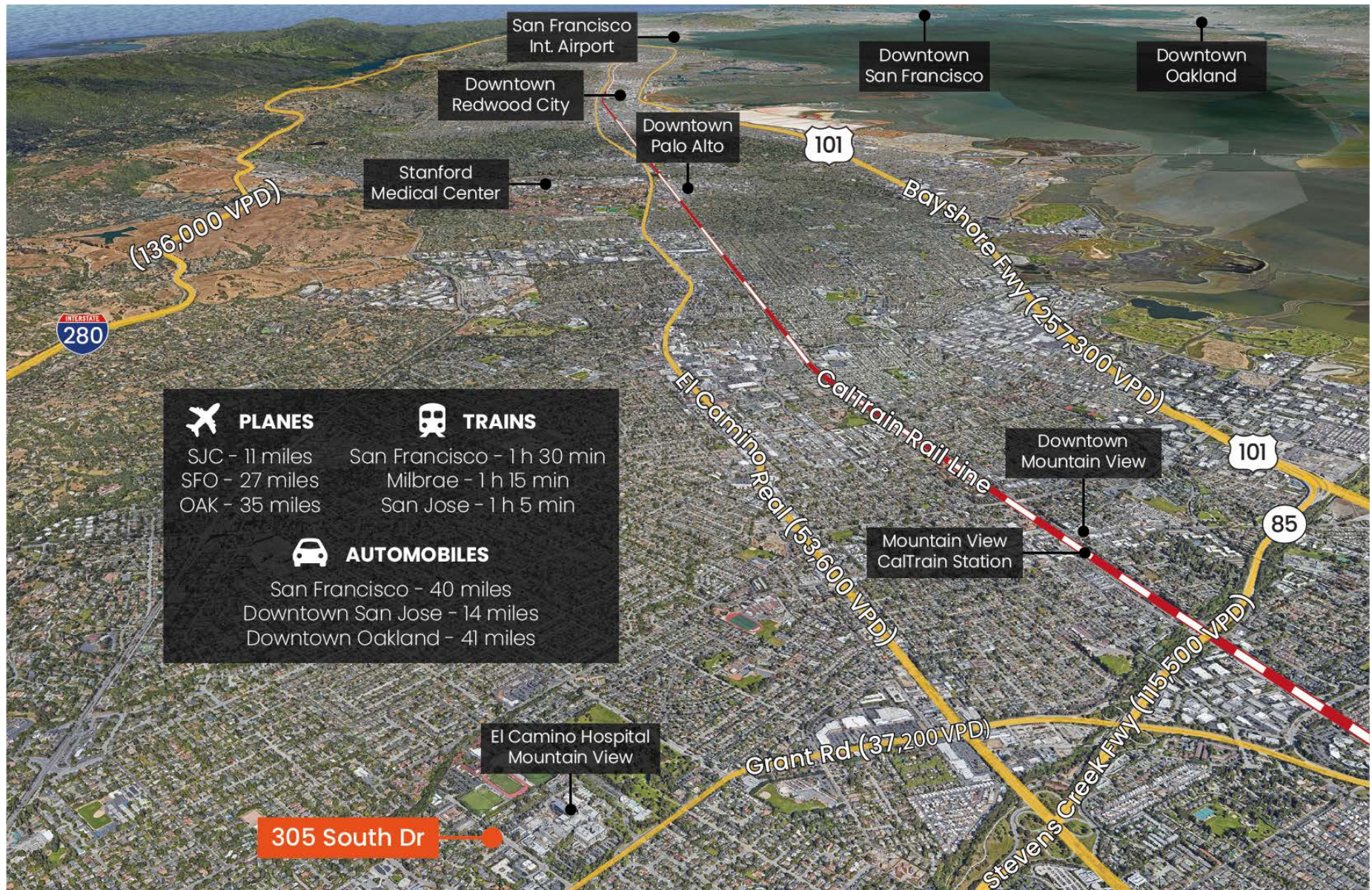


BRAD EHIKIAN
Partner
dre license #01736391
☎ | 650.618.3001
✉ | brad.ehikian@prprop.com

JON GOLDMAN
Partner
dre license #01295503
☎ | 650.618.3003
✉ | jon.goldman@prprop.com

JESSE EBNER
Vice President
dre license #02055989
☎ | 650.618.3017
✉ | jesse.ebner@prprop.com

TRANSPORTATION AERIAL



✈️ PLANES	🚆 TRAINS
SJC - 11 miles	San Francisco - 1 h 30 min
SFO - 27 miles	Milbrae - 1 h 15 min
OAK - 35 miles	San Jose - 1 h 5 min
🚗 AUTOMOBILES	
San Francisco - 40 miles	
Downtown San Jose - 14 miles	
Downtown Oakland - 41 miles	



BRAD EHIKIAN
 Partner
 dre license #01736391
 ☎ | 650.618.3001
 ✉ | brad.ehikian@prprop.com

JON GOLDMAN
 Partner
 dre license #01295503
 ☎ | 650.618.3003
 ✉ | jon.goldman@prprop.com

JESSE EBNER
 Vice President
 dre license #02055989
 ☎ | 650.618.3017
 ✉ | jesse.ebner@prprop.com

DEMOGRAPHICS



ONE-MILE POPULATION: 26,736

MEDIAN AGE
46.7

HOUSEHOLDS



FAMILIES



FAMILIES

4,793



Median Household Income
\$200,001

Average Household Size: **2.73** Owner Occupied Housing Units: **4,881** Renter Occupied Housing Units: **1,580** Median Household Income: **\$200,001** Average Household Income: **\$267,103**

MAJOR EMPLOYERS:

Data for all businesses in area	1 mile	3 miles	5 miles
Total Businesses:	678	6,683	14,231
Total Employees:	8,721	77,394	206,274
Total Residential Population:	17,926	170,346	366,251
Employee / Residential Population Ratio (per 100 Residents)	49	45	46



BRAD EHIKIAN
Partner
dre license #01736391
☎ | 650.618.3001
✉ | brad.ehikian@prprop.com

JON GOLDMAN
Partner
dre license #01295503
☎ | 650.618.3003
✉ | jon.goldman@prprop.com

JESSE EBNER
Vice President
dre license #02055989
☎ | 650.618.3017
✉ | jesse.ebner@prprop.com