

FOR SUBLEASE

MEDICAL PROFESSIONAL PLAZA

2820

GRIFFIN AVENUE

Enumclaw, WA 98022



PROPERTY DETAILS

- + Built-out medical surgery suite ideal for dental/oral or plastic surgery use
- + 2,500 RSF
- + Sublease through 12/31/2020
- + \$18.00 NNN
- + Abundant parking
- + Prominent location on Griffin Ave
- + Excellent access to Griffin Ave and State Highway 164
- + Convenient access to State Highway 410



www.cbre.us/seattle

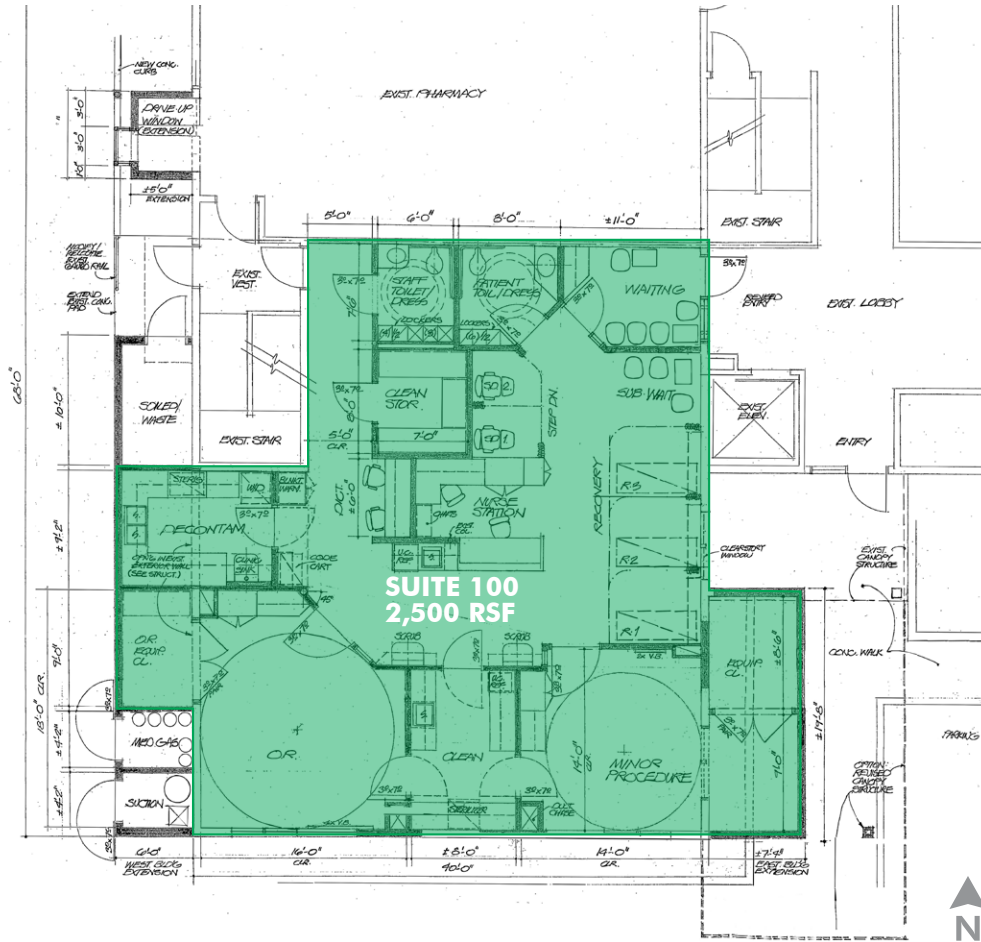
CBRE

FOR SUBLEASE MEDICAL PROFESSIONAL PLAZA

2820
GRIFFIN AVENUE
Enumclaw, WA 98022



FLOOR PLAN



CONTACT US

STEVEN PEROVICH
+1 206 292 6059
steven.perovich@cbre.com

MARCUS YAMAMOTO
+1 206 292 6062
marcus.yamamoto@cbre.com

CBRE, Inc.
1420 5th Avenue, Suite 1700
Seattle, WA 98101

© 2017 CBRE, Inc. All rights reserved. This information has been obtained from sources believed reliable, but has not been verified for accuracy or completeness. You should conduct a careful, independent investigation of the property and verify all information. Any reliance on this information is solely at your own risk. CBRE and the CBRE logo are service marks of CBRE, Inc. All other marks displayed on this document are the property of their respective owners. Photos herein are the property of their respective owners. Use of these images without the express written consent of the owner is prohibited. amf 080717

www.cbre.us/seattle

CBRE