



Retail/office building for sale.

Property Highlights

- Size: 6,100 SF
- Sales Price: \$779,900
- Currently used as an ice cream parlor
- Well kept and clean building in great location
- Busy intersection in the heart of South Ogden

Demographics

	1 Mile	3 Mile	5 Mile
Population			
2017 Estimated Population	11,099	85,418	166,791
2022 Projected Population	11,499	88,910	174,312
Households			
2017 Estimated Households	3,790	30,955	58,050
2022 Projected Households	3,914	32,224	60,574
2017 Est. Median HH Income	\$46,012	\$49,177	\$53,263
2017 Est. Average HH Income	\$58,289	\$65,139	\$68,105
2017 Est. Per Capita HH Income	\$20,109	\$23,909	\$24,190

Source: U.S. Census Bureau, Census 2010 Data. Esri forecasts for 2017 and 2022.

Julie Brown

Associate
+1 801 784 5317
julie.brown@cushwake.com

April Hartzell

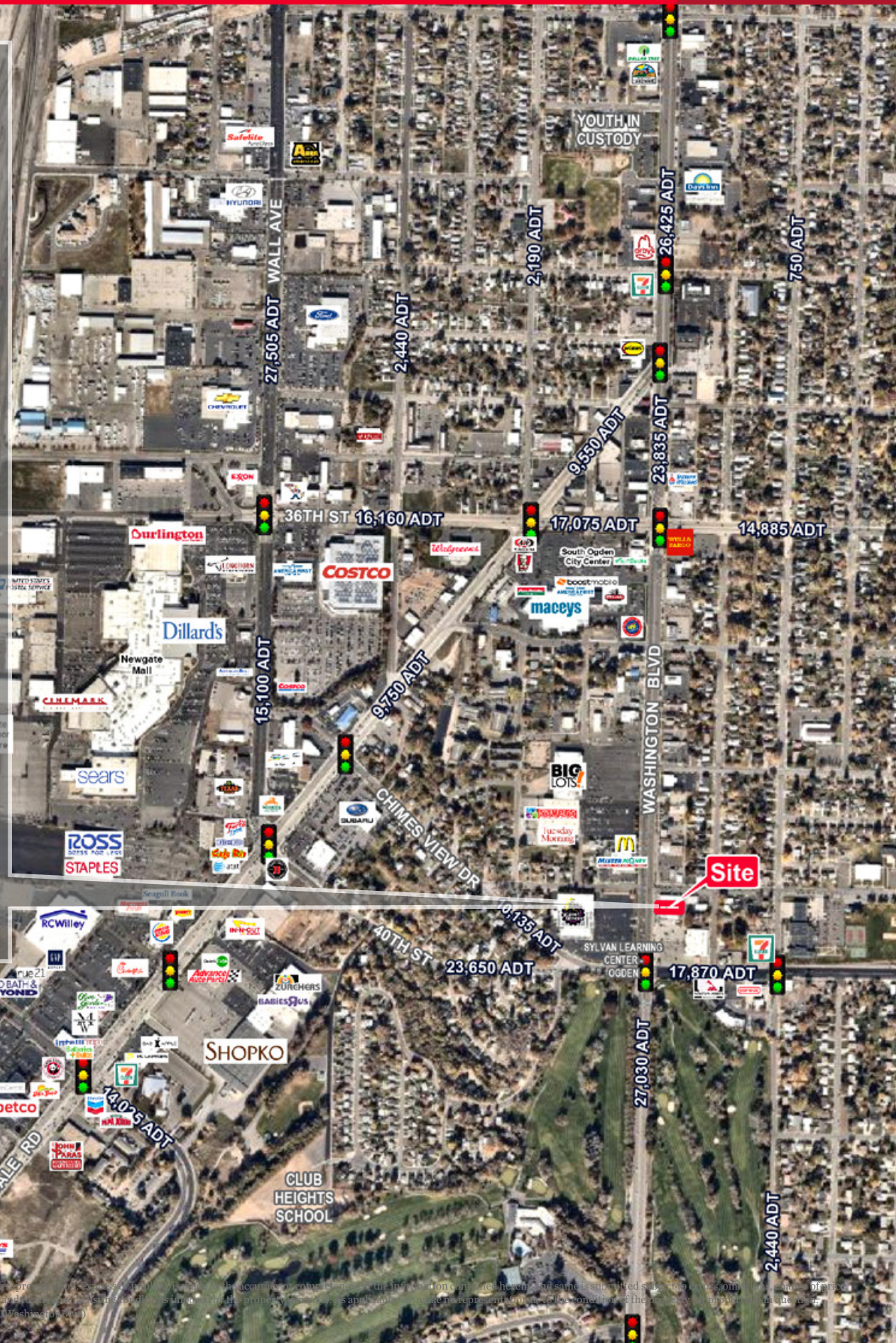
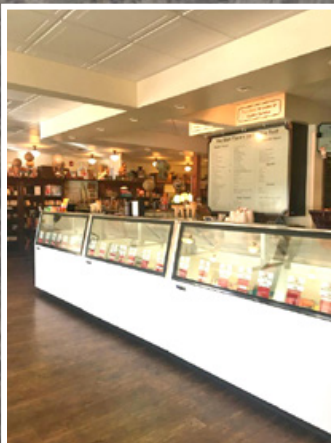
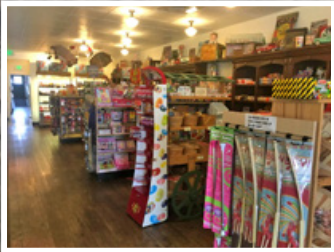
Office Manager
+1 801 784 5319
april.hartzell@cushwake.com

372 24th Street, Suite 320
Ogden, Utah 84401
Main +1 801 525 3000
Fax +1 801 525 9596
cushmanwakefield.com

FOR SALE

Burch Creek Mercantile

3920 Washington Blvd / South Ogden, UT



Cushman & Wakefield © 2016. All rights reserved. This information is for informational purposes only and is not intended to be used as a basis for investment. The information contained herein is for informational purposes only and is not intended to be used as a basis for investment. The information contained herein is for informational purposes only and is not intended to be used as a basis for investment. The information contained herein is for informational purposes only and is not intended to be used as a basis for investment.