

40 GROVE STREET

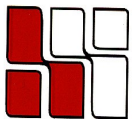
WELLESLEY, MA



Currently Available:

1,647 RSF on the Third Floor

Covered Parking Garage

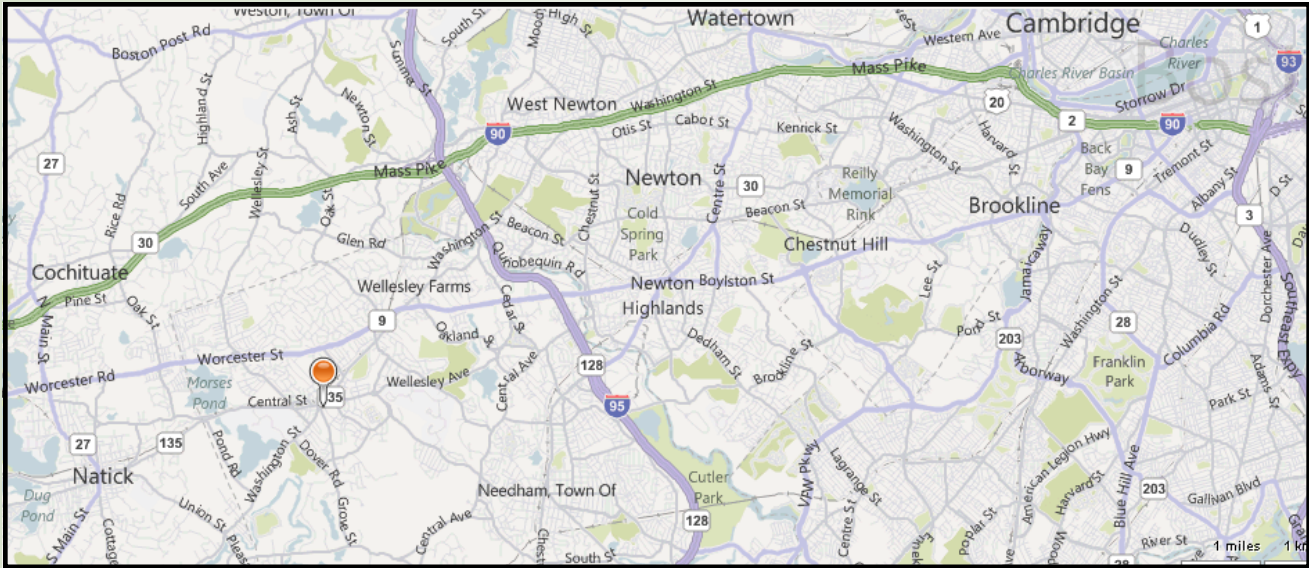


**HAYNES
MANAGEMENT, INC.**

781-235-4300

www.haynesmanagement.com

**OFFICE SUITE AVAILABLE:
1,647 R.S.F**



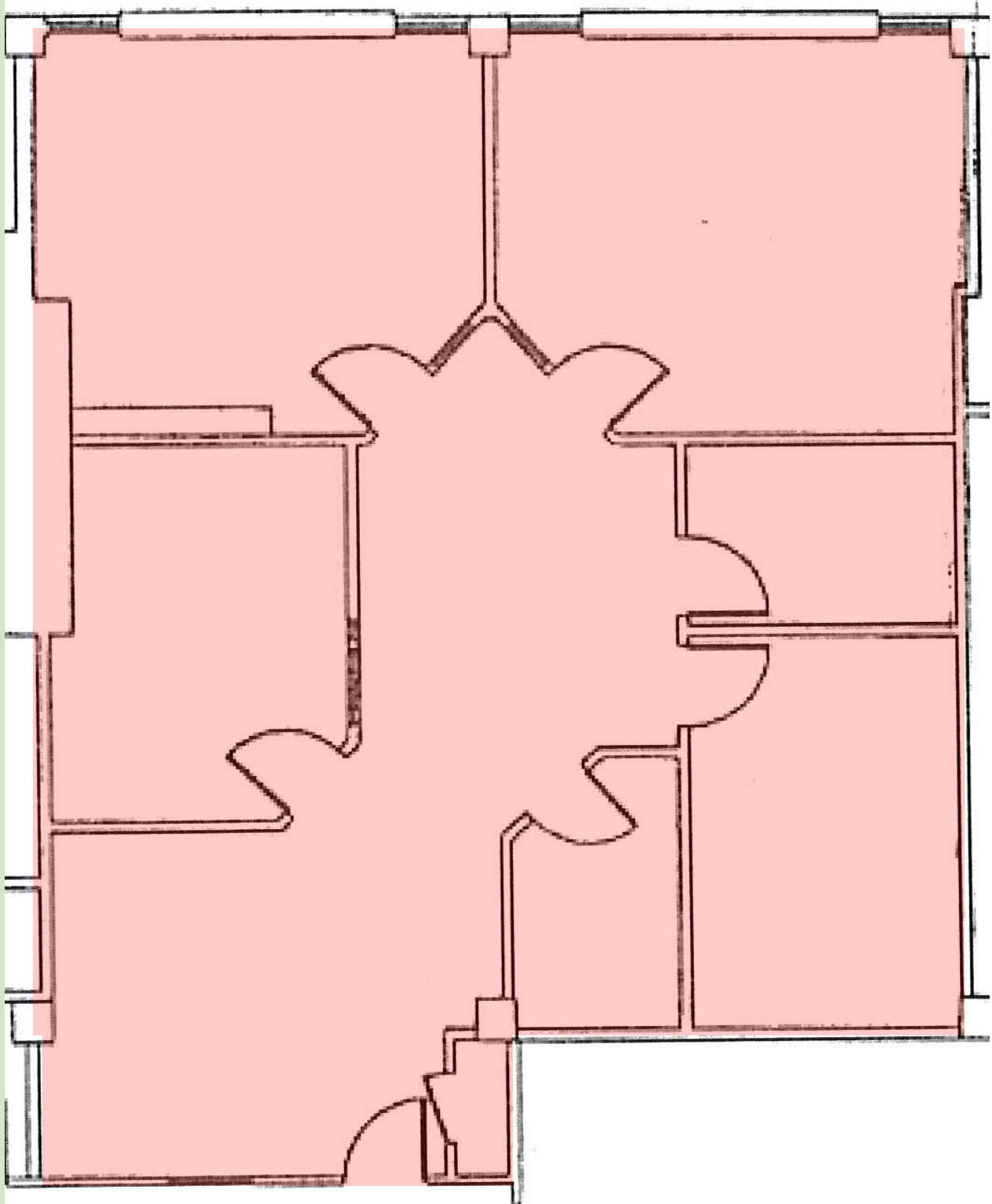
- **Locally based Landlord with 35 years experience, that offers quality customer service.**
- **Located in the heart of Wellesley Square**
- **Many large windows providing excellent light**
- **On-site covered parking**
- **Many amenities at your doorstep**



**For more information:
781-235-4300
www.haynesmanagement.com**



**OFFICE SUITE AVAILABLE:
1,647 R.S.F on Third Floor**



**For more information:
781-235-4300
www.haynesmanagement.com**