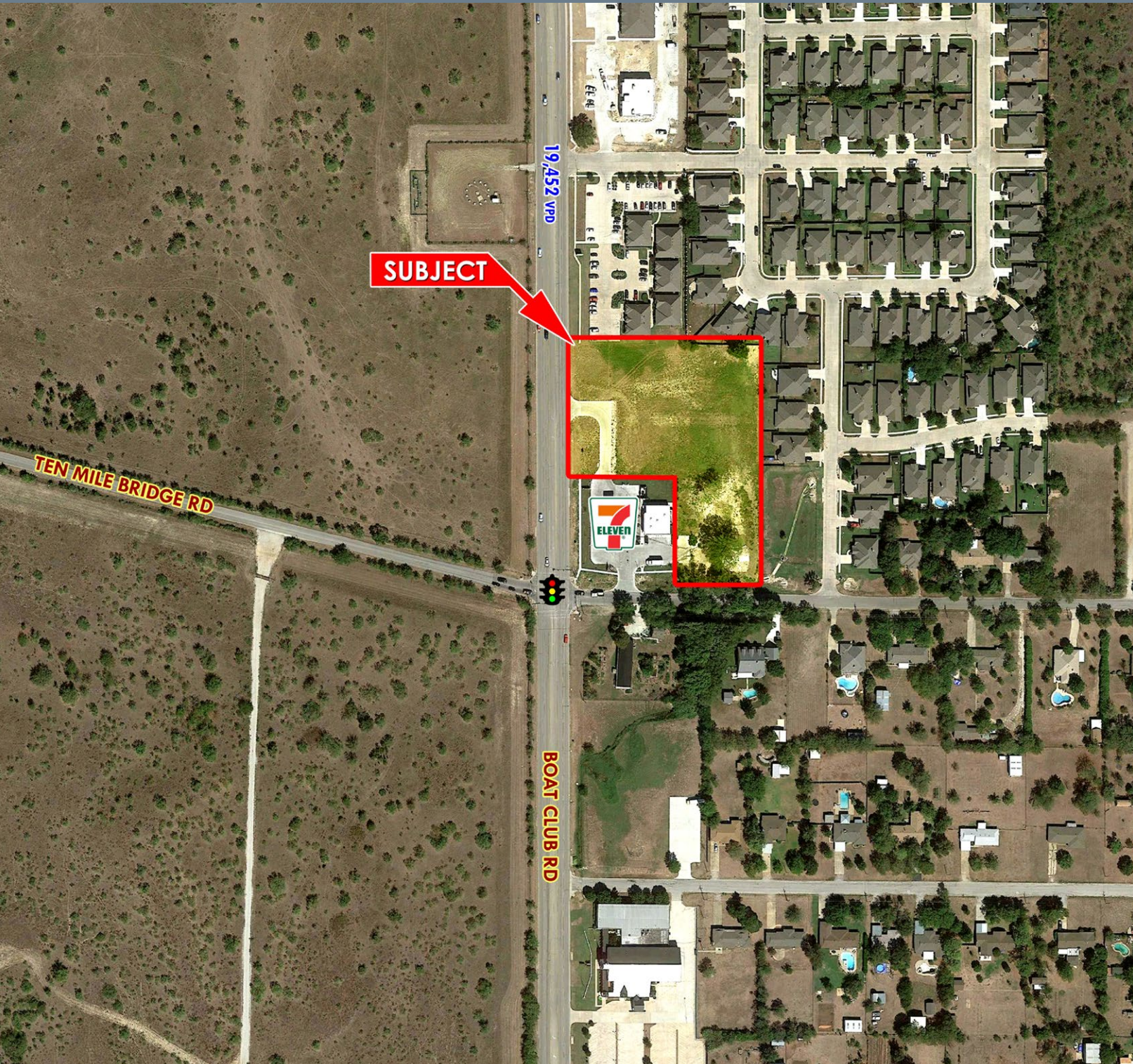


NEC BOAT CLUB RD & TEN MILE BRIDGE RD

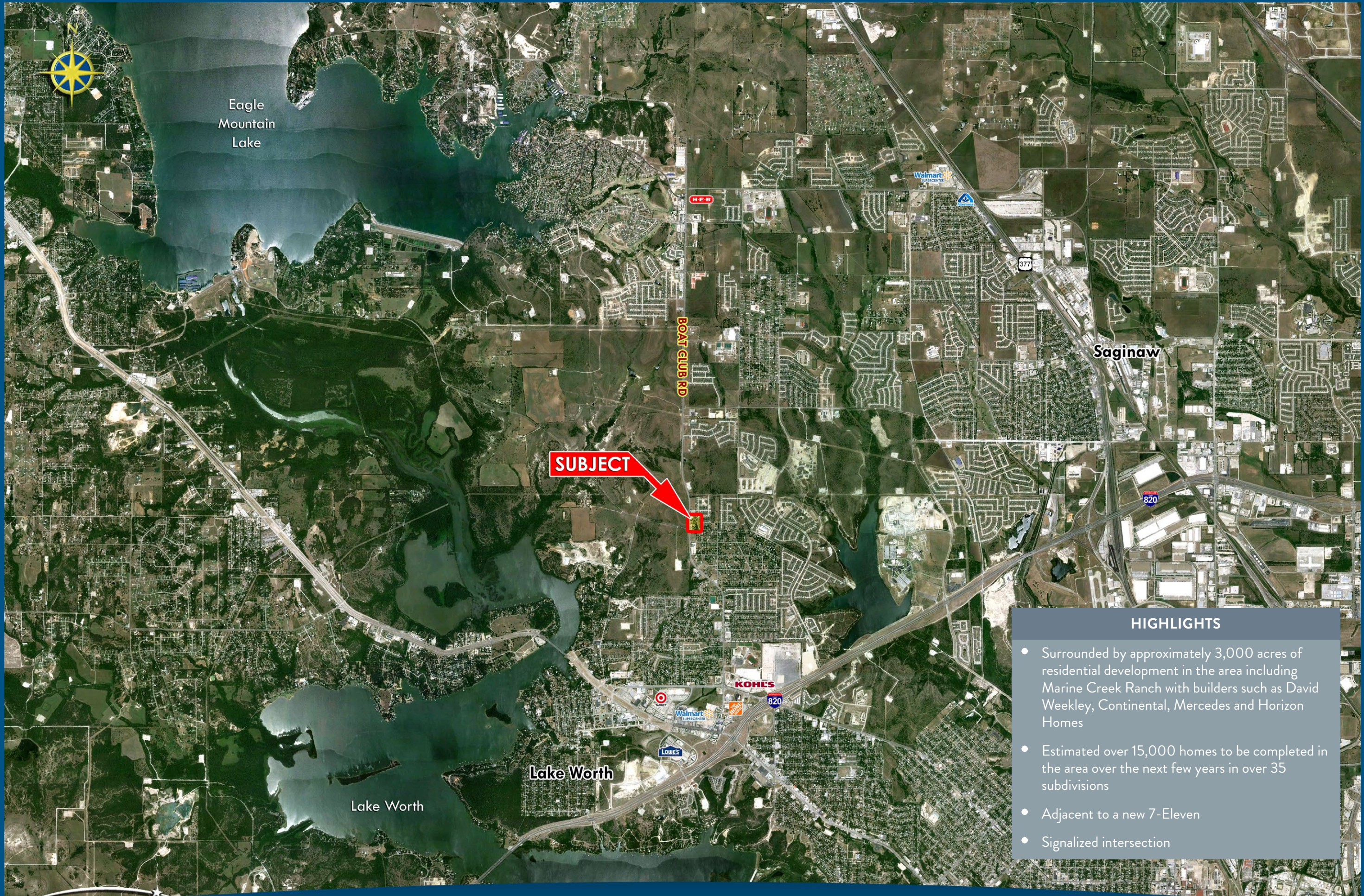
LAND/PADS FOR SALE

FORT WORTH, TEXAS

CLAY MOTE



LEASING | TENANT REPRESENTATION | LAND | INVESTMENT SALES | PROPERTY MANAGEMENT



Eagle Mountain Lake

Saginaw

**SUBJECT**

BOAT CLUB RD

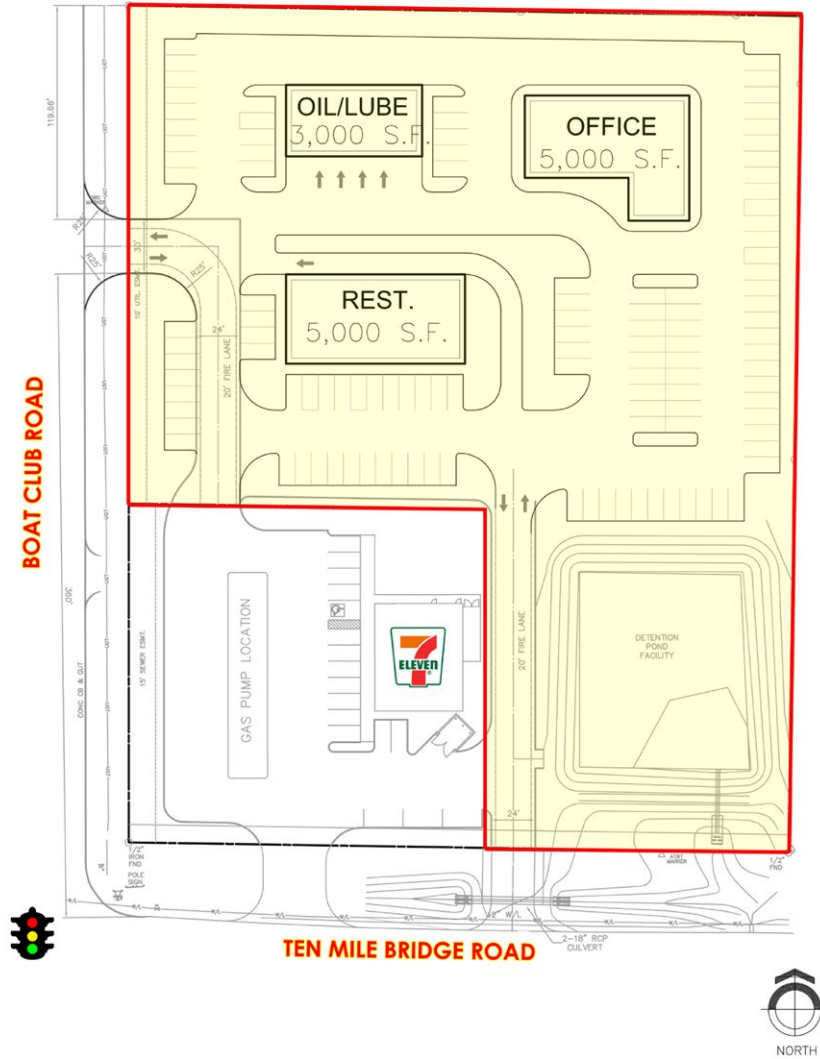
Lake Worth

Lake Worth

**HIGHLIGHTS**

- Surrounded by approximately 3,000 acres of residential development in the area including Marine Creek Ranch with builders such as David Weekley, Continental, Mercedes and Horizon Homes
- Estimated over 15,000 homes to be completed in the area over the next few years in over 35 subdivisions
- Adjacent to a new 7-Eleven
- Signalized intersection

# NEC BOAT CLUB RD & TEN MILE BRIDGE RD



DEMOGRAPHICS	1 MILE	3 MILE	5 MILE
2015 EST POPULATION	7,153	52,561	122,973
2015 EST AVG HH INCOME	\$66,506	\$65,223	\$65,955

TRAFFIC COUNTS	
BOAT CLUB ROAD	19,452 VPD

- ### HIGHLIGHTS
- 3.13 Acres - will divide
  - Zoned "E" Neighborhood Commercial

