



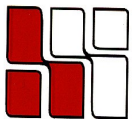
2345 WASHINGTON STREET

Newton Lower Falls, MA



LANDMARK BUILDING

**LOCATED 1/4 MILE FROM THE
JUNCTION OF RTE. 16 & 128
MANY AMENITIES WITHIN WALKING DISTANCE
RESTAURANTS, BANKS, HEALTH CLUB, POST OFFICE
AMPLE PARKING
ATTRACTIVE SUBURBAN SETTING**



**HAYNES
MANAGEMENT, INC.**

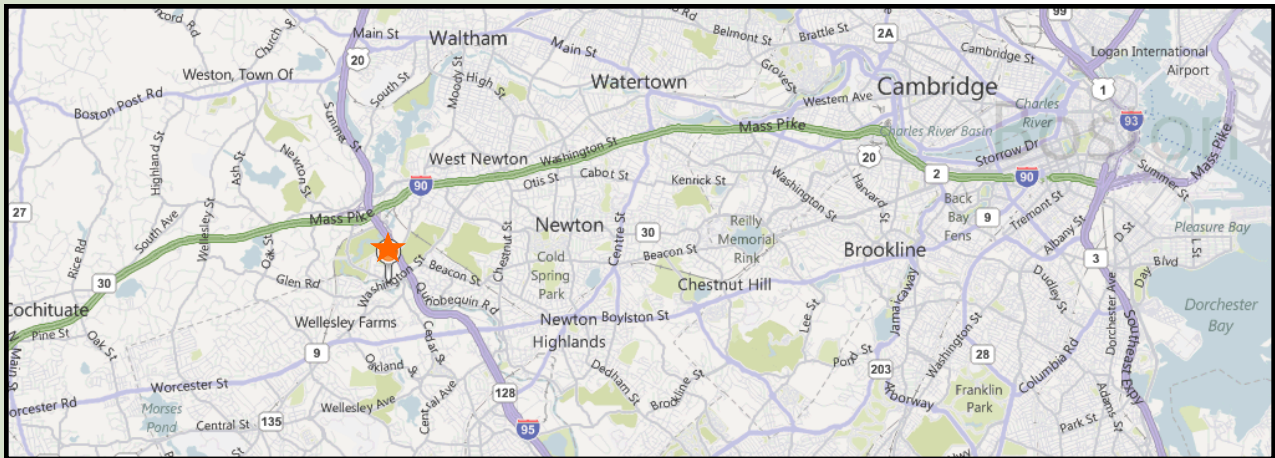
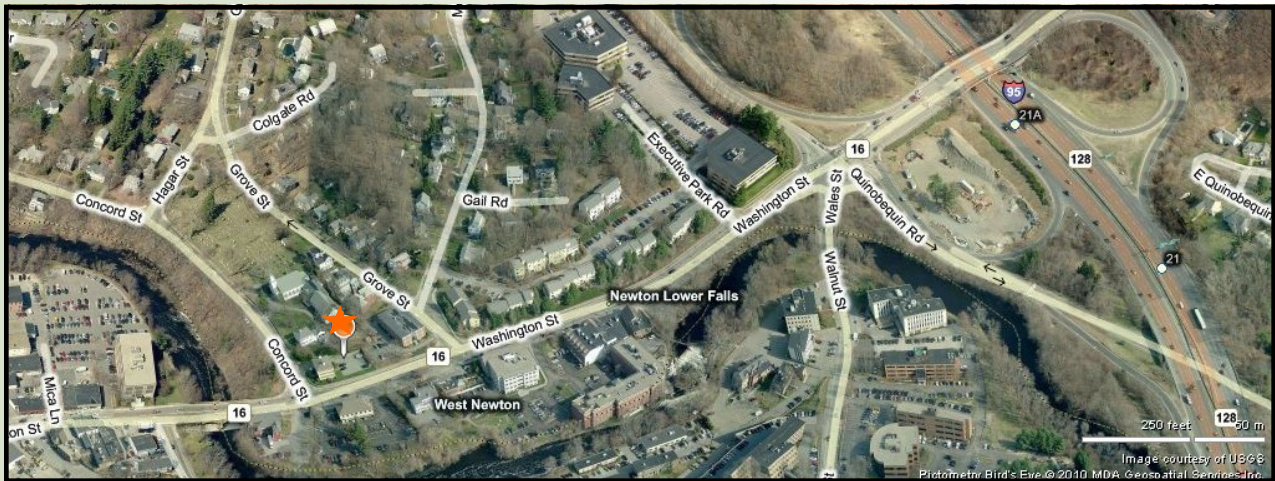
781-235-4300

www.haynesmanagement.com

All information furnished regarding this property is from sources deemed reliable and is submitted subject to errors, omissions, modifications and withdrawals without notice. No warranty or representation is made as to the accuracy of any information contained herein.

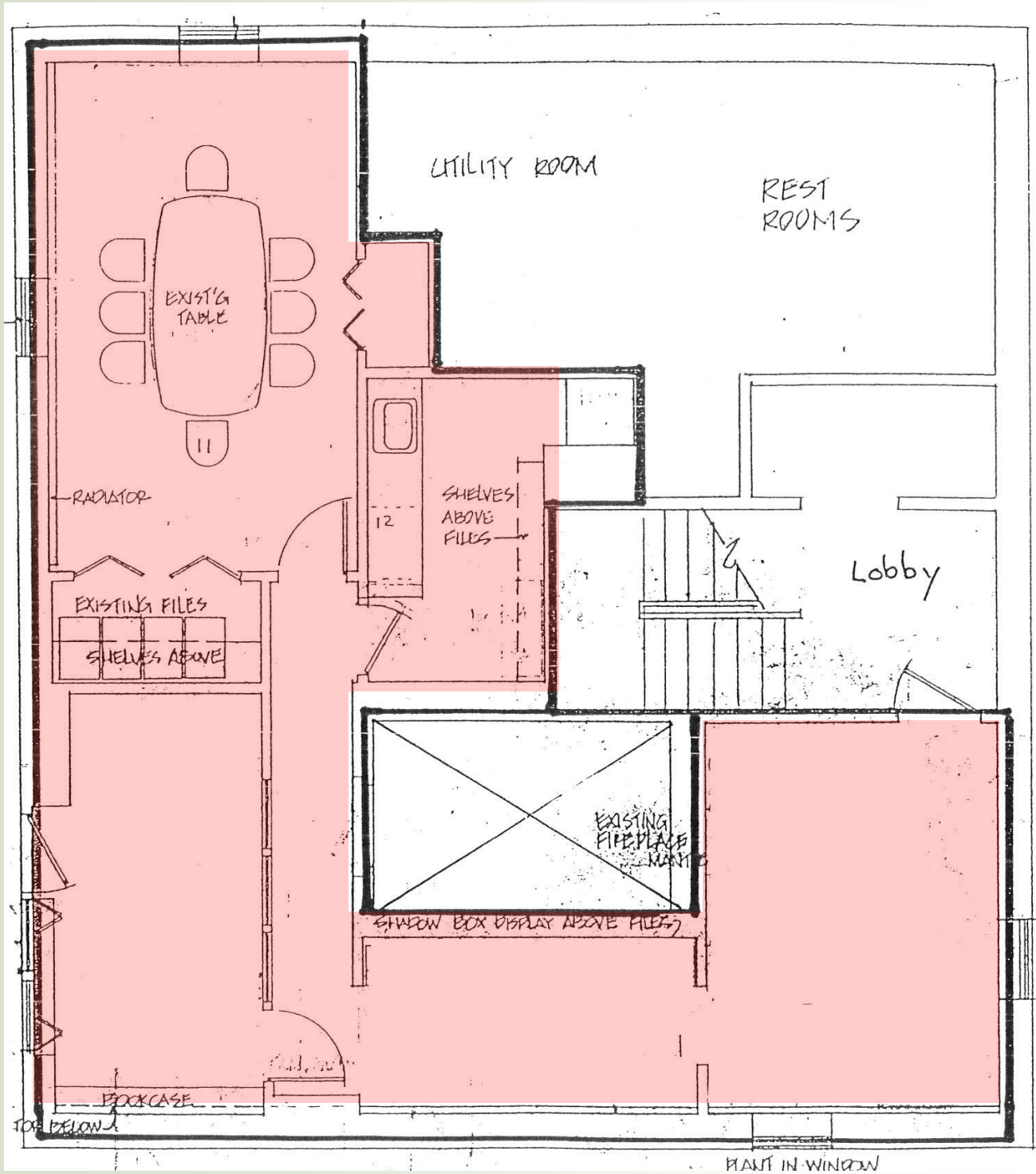
OFFICE SUITE AVAILABLE: 980 RSF on Mezzanine

- Lots of Operable Windows
- Many Exposed Beams
- Fireplace and Cubbies
- Multi-zoned HVAC System
- Updated Electric Systems
- Unique Working Environment



For more information:
781-235-4300
www.haynesmanagement.com

**OFFICE SUITE AVAILABLE:
980 R.S.F on Mezzanine**



**For more information:
781-235-4300
www.haynesmanagement.com**