

For Lease

7600 Sovereign Row, Dallas, TX 75247

16,500 SF AVAILABLE



PROPERTY OVERVIEW

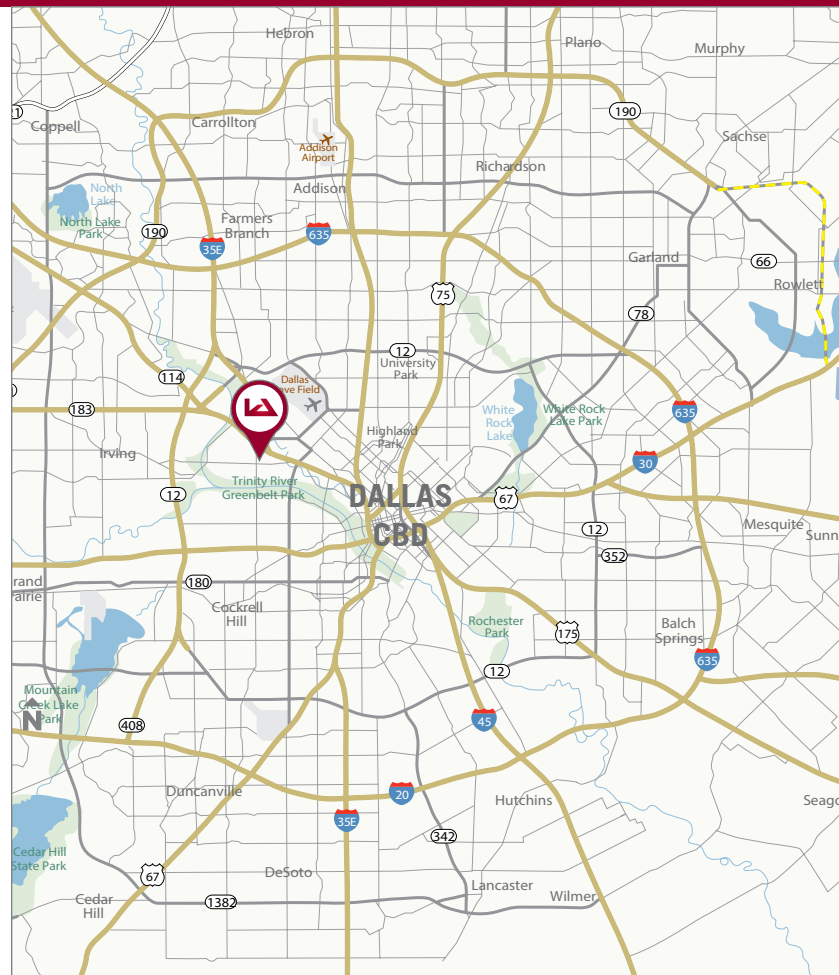
County: Dallas
Market: Stemmons Freeway
Sub Market: West Brookhollow Industrial

BUILDING DATA

Total Building SF: 16,500
Clear Height: 14'

LISTING DATA

Available SF: 16,500 SF
Warehouse Size: 14,500 SF
Office SF: 2,000 SF
Loading Docks: 2 Semi-Dock High Doors
Comments: Outside Storage
Heavy Power
53' Truck Access



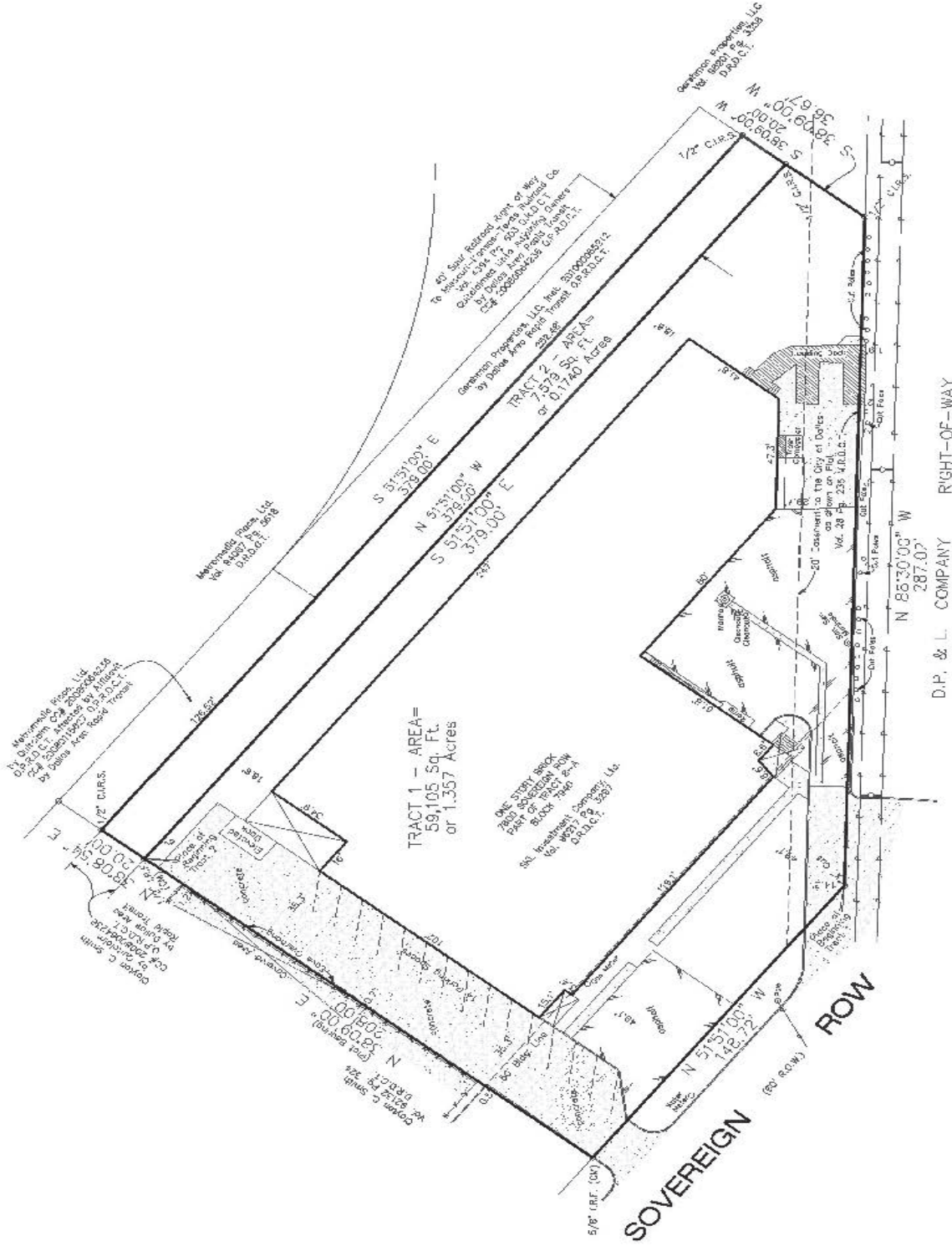
For more information contact:

Stephen Williamson, Associate
swilliamson@lee-associates.com
D 972.934.4045

For Lease

7600 Sovereign Row, Dallas, TX 75247

16,500 SF AVAILABLE



The property information/detail contained herein has been obtained from other sources believed to be reliable, and DFW Lee & Associates, LLC has not independently verified such information's accuracy. DFW Lee & Associates, LLC makes no representations, guarantees, or express or implied warranties of any kind regarding the accuracy or completeness of the information provided herein nor the condition of the property and expressly disclaims all such warranties, including but not limited to the implied warranty of suitability and fitness for a particular purpose. Buyer/Lessee should perform its own due diligence regarding the accuracy of the information upon which buyer/lessee relies when entering into any transaction with seller/lessor herein. Furthermore, the information provided herein, including any sale/lease terms, are being provided subject to errors, omissions, changes of price or conditions, prior sale or lease, and withdrawal without notice.

For more information contact:

Stephen Williamson, Associate
swilliamson@lee-associates.com
D 972.934.4045

lee-associates.com

