



Karen Sunday

949-632-7727
Karen@karensunday.com

Broker ID #00870655



KAREN SUNDAY
& ASSOCIATES, INC.

LIFE IS FULL OF LEASING. I NEGOTIATE WELL!

23 Corporate Plaza Drive | Suite 150 | Newport Beach | CA 92660

31569 Canyon Estates Dr, Unit 100, Lake Elsinore CA 92532



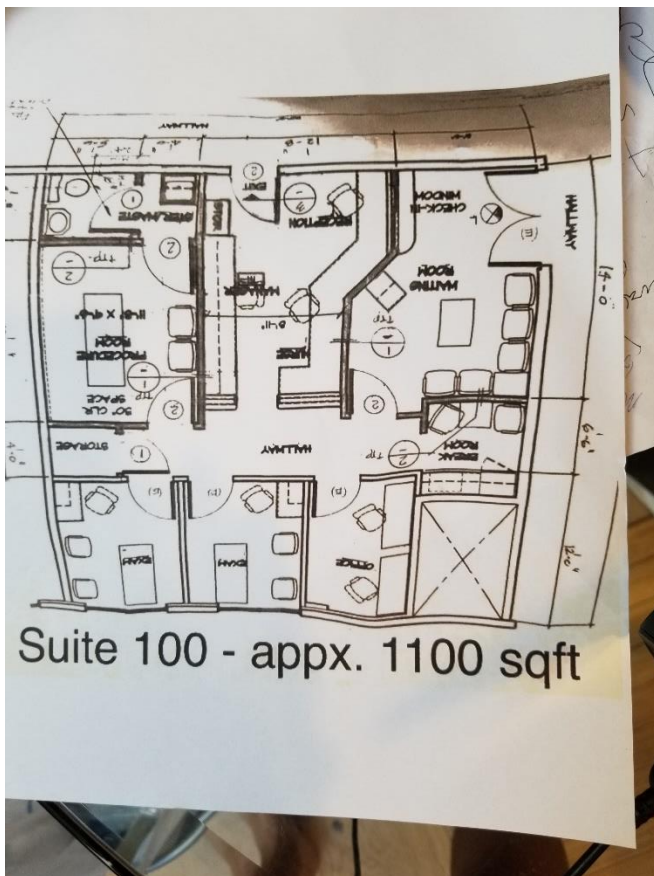
Type: Medical Office-

Square Feet: 300- 1,100

Asking rent: \$2.50 Modified Gross

Available: shared space preferably or the entire suite for lease – call to show Karen Sunday 9496327727

Parking: Free



To view additional listings visit www.KarenSunday.com

Additional photos:



To view additional listings visit www.KarenSunday.com















To view additional listings visit www.KarenSunday.com