

FOR LEASE

Professional Office

442 & 450 N. Dobson Road
Mesa, AZ 85201



- Rental Rate: Office \$18 PSF Full Service, Net of Janitorial
- Great Visibility on Dobson Road
- Move In Ready
- Covered Parking Available
- Monument Signage Available
- 2006 Construction
- Zoning: L-C
- Located a Short Distance From Mesa Riverview; a ±1.27 Million Square Foot Retail Power Center Including Retailers Such As Walmart Super Center, OfficeMax, Bed, Bath & Beyond and Numerous Dining and Fast Food Options



CUTLER COMMERCIAL

2150 E. Highland, Suite 270
Phoenix, AZ 85016

P (602) 955-3500 | F (602) 955-2828
www.cutlercommercial.com

For more information, please contact:

ERIC FERBER

ASSOCIATE

(602) 386-1234

eferber@cutlercommercial.com

BRAD BURRESS

SENIOR ASSOCIATE

(602) 386-1250

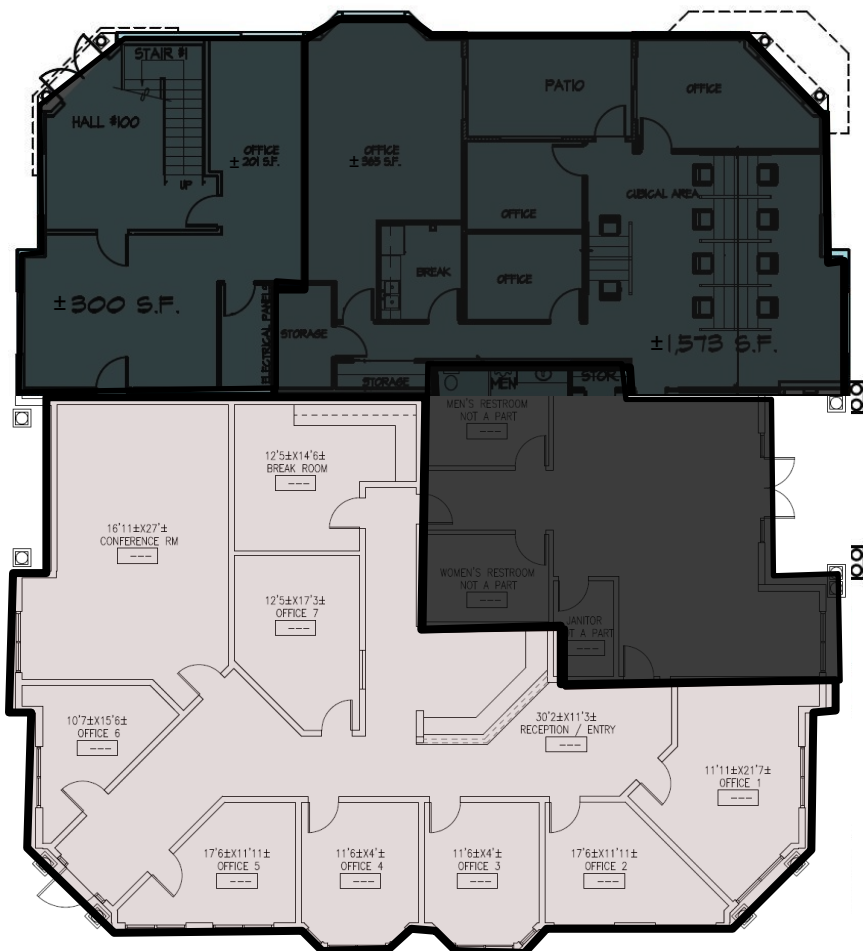
bburress@cutlercommercial.com

All information furnished is from sources deemed reliable. No representation is made as to the accuracy thereof and it is submitted subject to errors, omissions, changes, or withdrawal without notice and to any special listings conditions, including the rate and manner of payment of commissions for particular offerings imposed by principals or agreed to by the company, the terms of which are available to interested principals or brokers. All dimensions are approximate. Owner and/or Broker make no representations expressed or implied as to the accuracy of floor plan/site plan dimensions. All dimensions are approximate. Owner and/or Broker make no representations expressed or implied as to the accuracy of floor plan/site plan dimensions.

FOR LEASE



Availabilities & Photos

442 & 450 N. Dobson Road
Mesa, AZ 85201

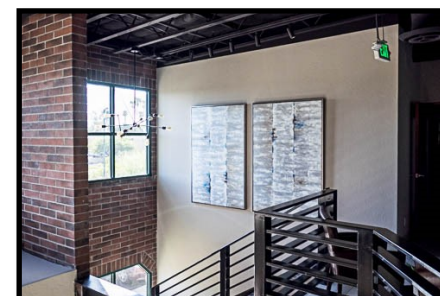
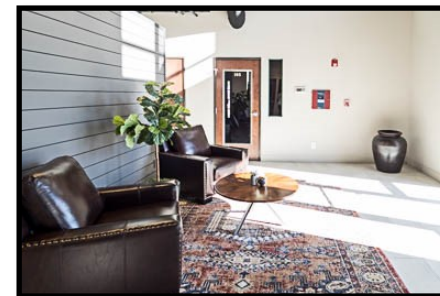


NOTE: ALL DIMENSIONS ARE APPROXIMATE AND THE SITE PLAN IS NOT TO SCALE

First Floor Availabilities:

-  Suite 2: ±2,928 SF
-  Not Available

**Newly Completed
Lobby Remodel!**



CUTLER COMMERCIAL

2150 E. Highland, Suite 270
Phoenix, AZ 85016

P (602) 955-3500 | F (602) 955-2828

www.cutlercommercial.com

For more information, please contact:

ERIC FERBER

ASSOCIATE

(602) 386-1234

eferber@cutlercommercial.com

BRAD BURRESS

SENIOR ASSOCIATE

(602) 386-1250

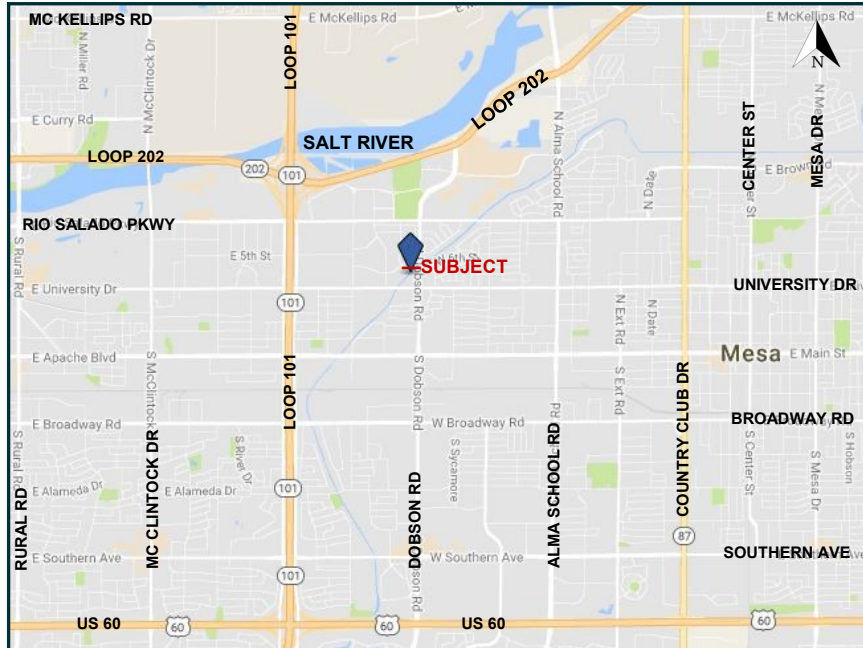
bburress@cutlercommercial.com

All information furnished is from sources deemed reliable. No representation is made as to the accuracy thereof and it is submitted subject to errors, omissions, changes, or withdrawal without notice and to any special listings conditions, including the rate and manner of payment of commissions for particular offerings imposed by principals or agreed to by the company, the terms of which are available to interested principals or brokers. All dimensions are approximate. Owner and/or Broker make no representations expressed or implied as to the accuracy of floor plan/site plan dimensions. All dimensions are approximate. Owner and/or Broker make no representations expressed or implied as to the accuracy of floor plan/site plan dimensions.

FOR LEASE

Location Map & Photos

442 & 450 N. Dobson Road
Mesa, AZ 85201



CUTLER COMMERCIAL
2150 E. Highland, Suite 270
Phoenix, AZ 85016
P (602) 955-3500 | F (602) 955-2828
www.cutlercommercial.com

For more information, please contact:

ERIC FERBER

ASSOCIATE

(602) 386-1234

eferber@cutlercommercial.com

BRAD BURRESS

SENIOR ASSOCIATE

(602) 386-1250

bburress@cutlercommercial.com

All information furnished is from sources deemed reliable. No representation is made as to the accuracy thereof and it is submitted subject to errors, omissions, changes, or withdrawal without notice and to any special listings conditions, including the rate and manner of payment of commissions for particular offerings imposed by principals or agreed to by the company, the terms of which are available to interested principals or brokers. All dimensions are approximate. Owner and/or Broker make no representations expressed or implied as to the accuracy of floor plan/site plan dimensions. All dimensions are approximate. Owner and/or Broker make no representations expressed or implied as to the accuracy of floor plan/site plan dimensions.