

5250 SOUTH
COMMERCE DRIVE

ATRIUM BUILDING



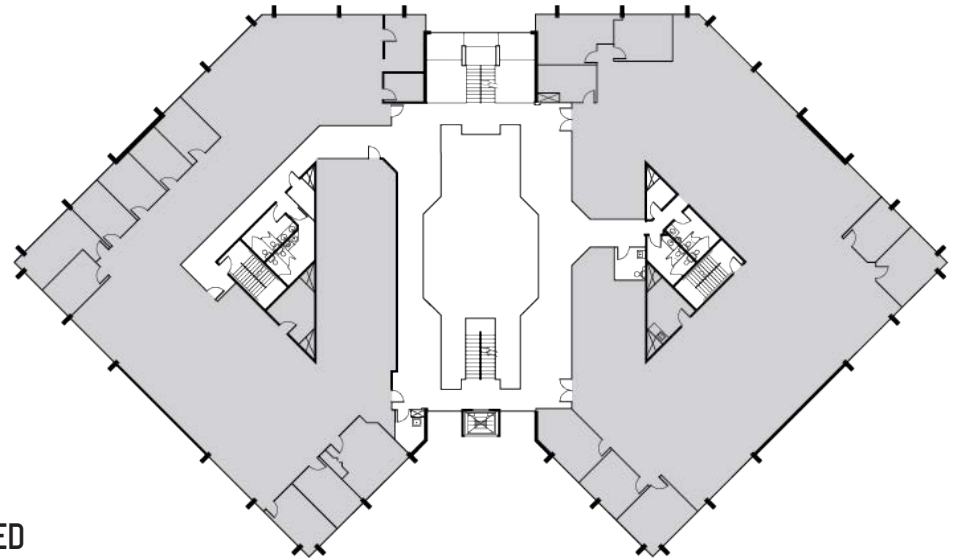
FOR LEASE
MOVE IN READY SPACE

Jones Lang LaSalle Americas, Inc.

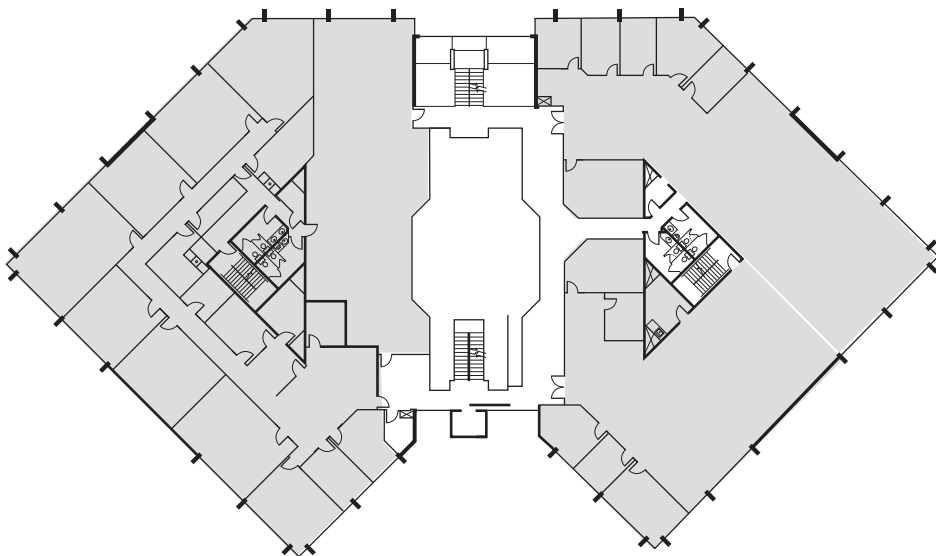
FIRST FLOOR



SECOND FLOOR



THIRD FLOOR



PROPERTY HIGHLIGHTS:

- Building Renovations Now Complete
- Asking Rate \$22.50 FS
- 2,180 SF Available, Suite 195
- Move In Ready Space
- Central Location with Quick Access to I-15 and Murray TRAX/FrontRunner Station
- Backup Generator On-site
- 4.5 / 1000 Parking





SITE: 5250 S COMMERCE DR



Murray Central Station
(Trax/Fronrunner)



Commerce Dr

5300 South

Cottonwood St

AMENITIES: 3 Minute drive →



JENNY TAUMOEPEAU
801 456 9536
jenny.taumoepeau@am.jll.com

DAVID NIXON
801 456 9518
david.nixon@am.jll.com